

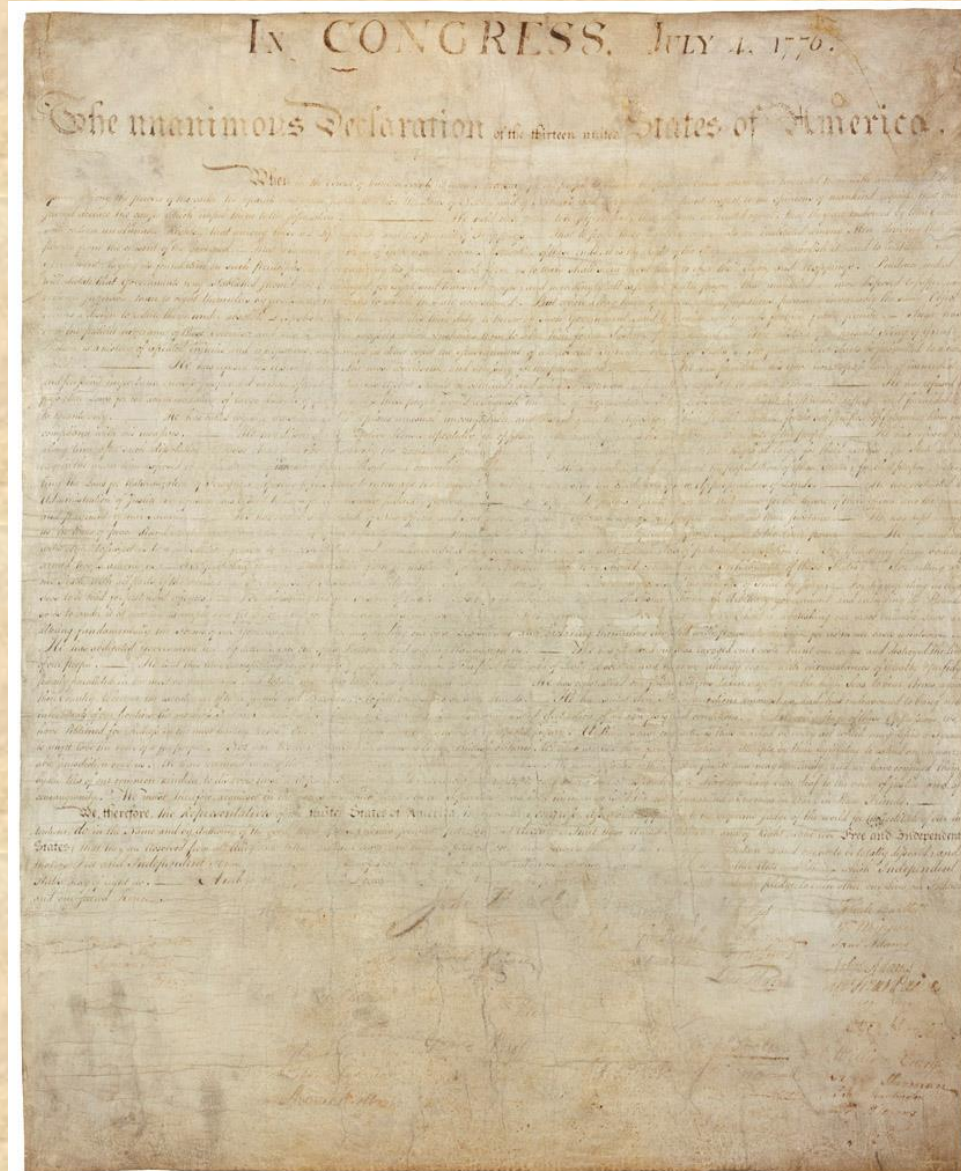
*The Charters of Freedom
Documents*

Evidence and Examination

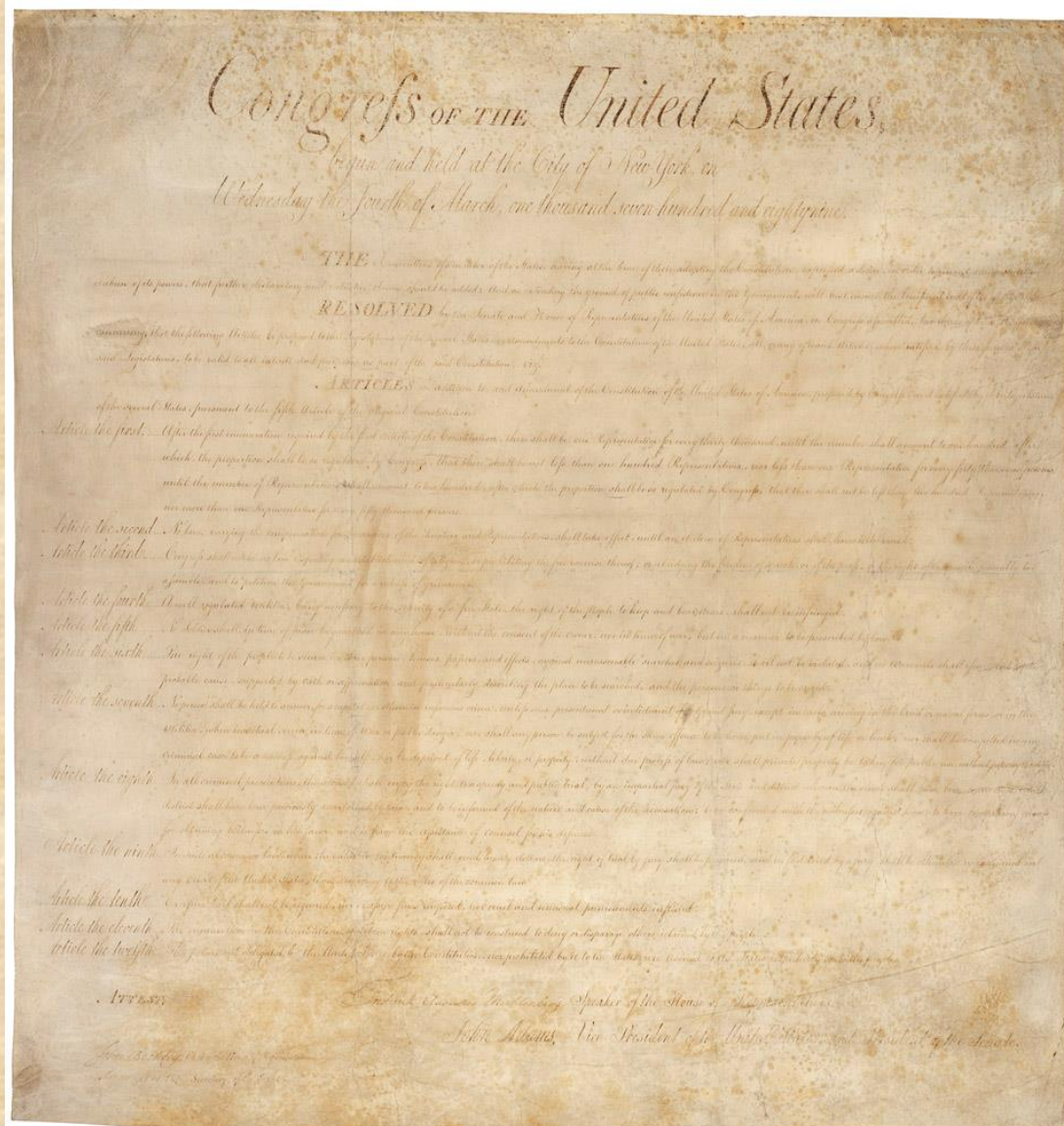
Mary Lynn Ritzenthaler

Catherine Nicholson

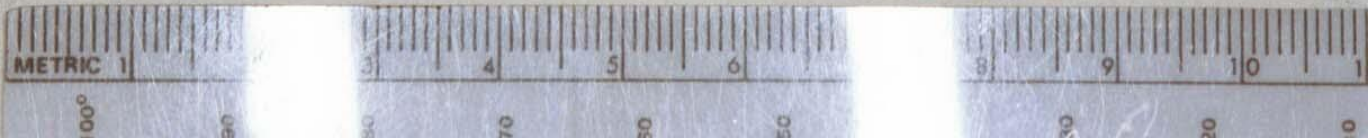
Declaration of Independence



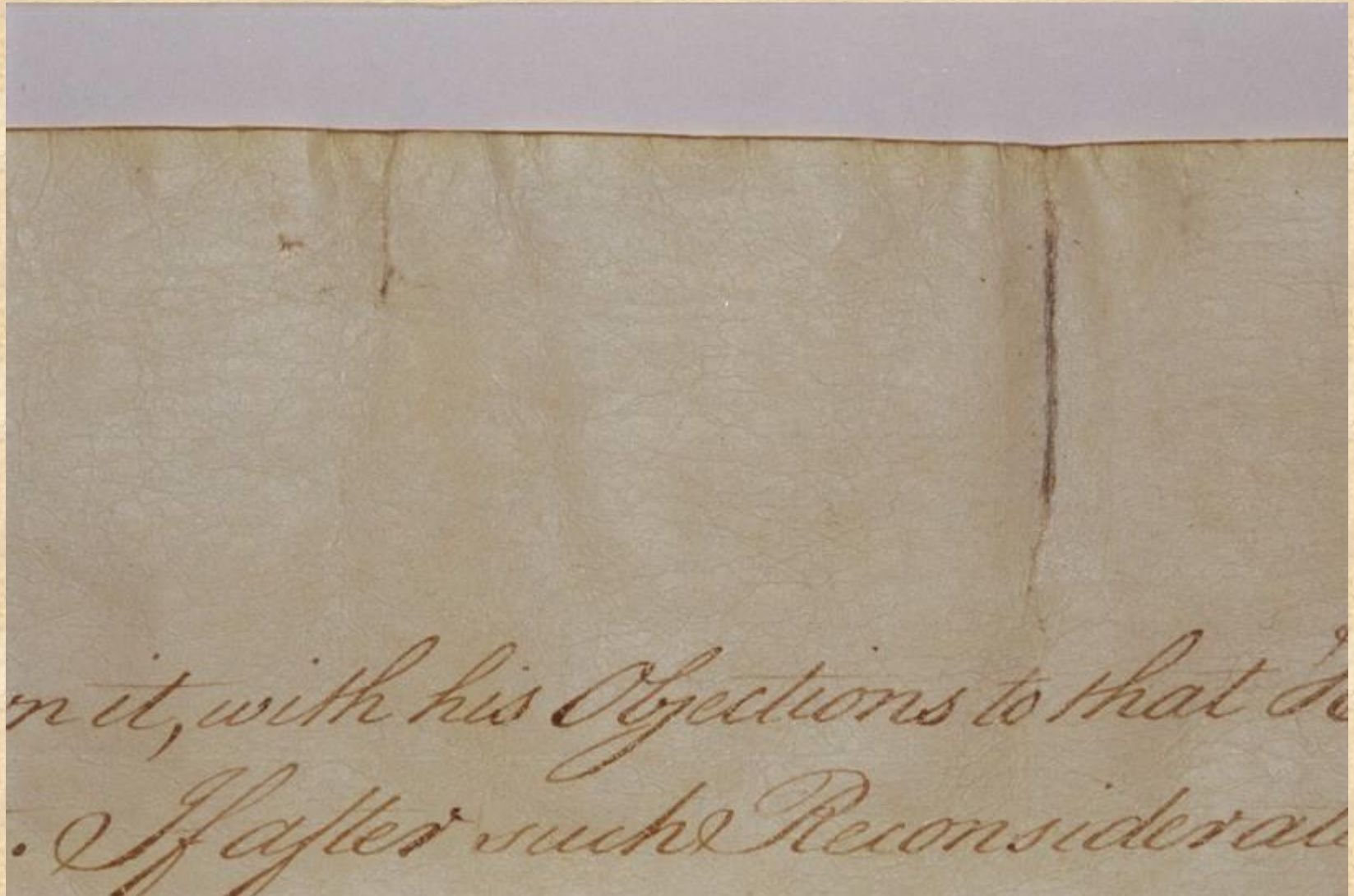
The Bill of Rights



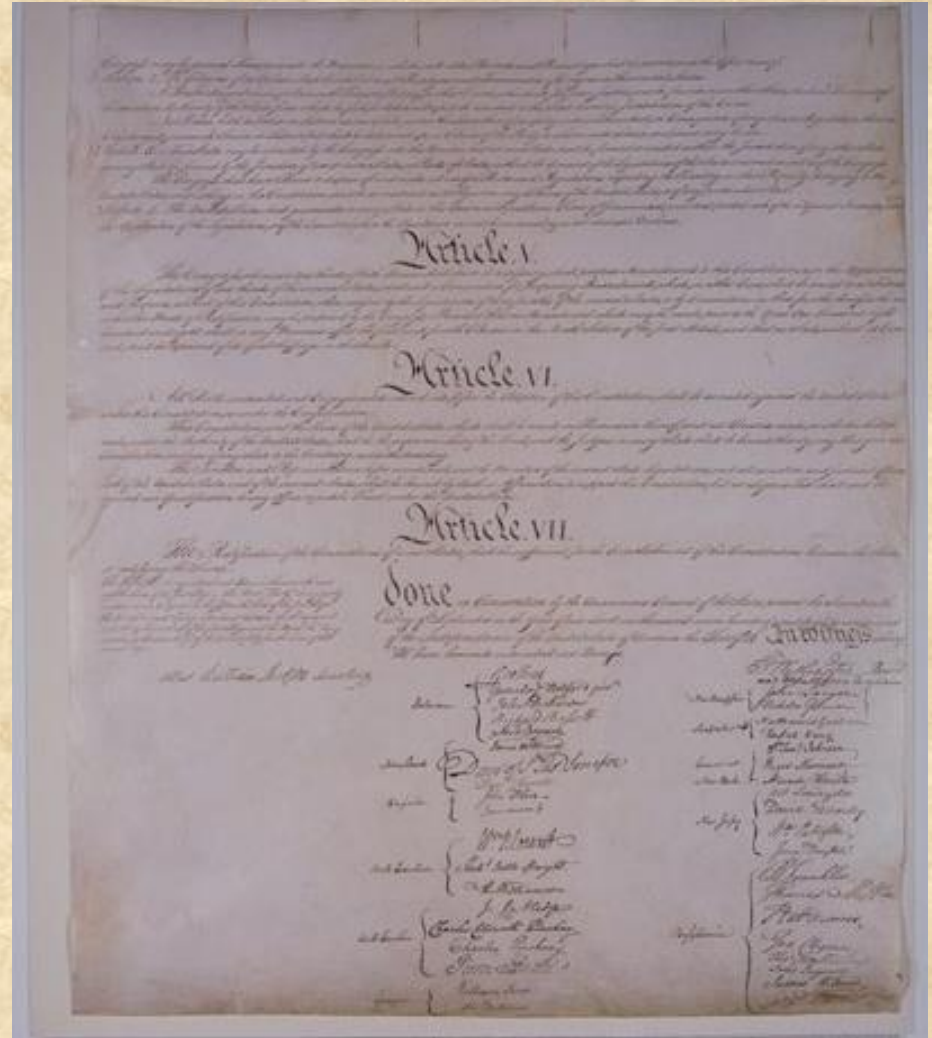
Axillae marks



Constitution: central pinhole & slit



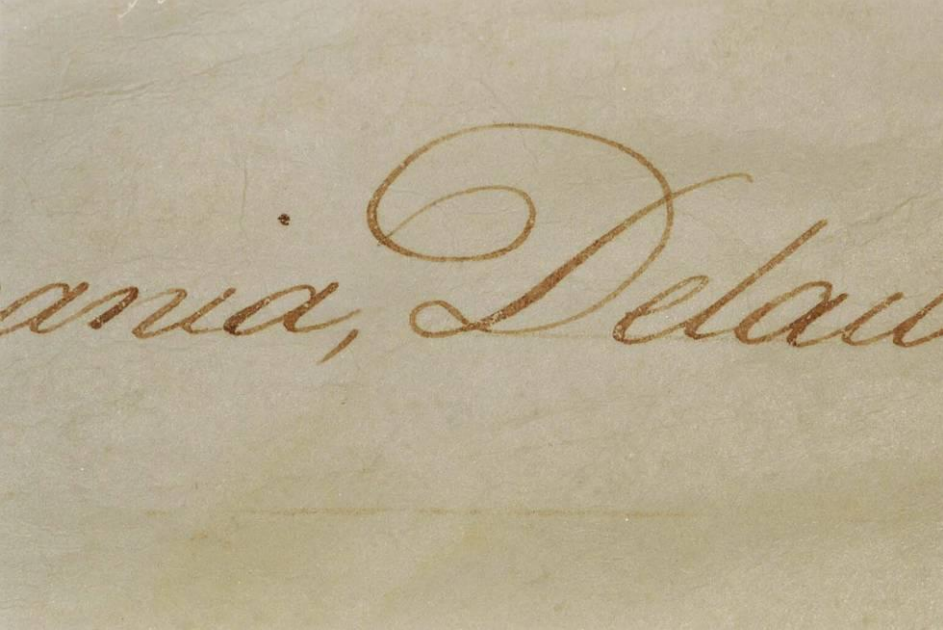
Constitution: vertical slits



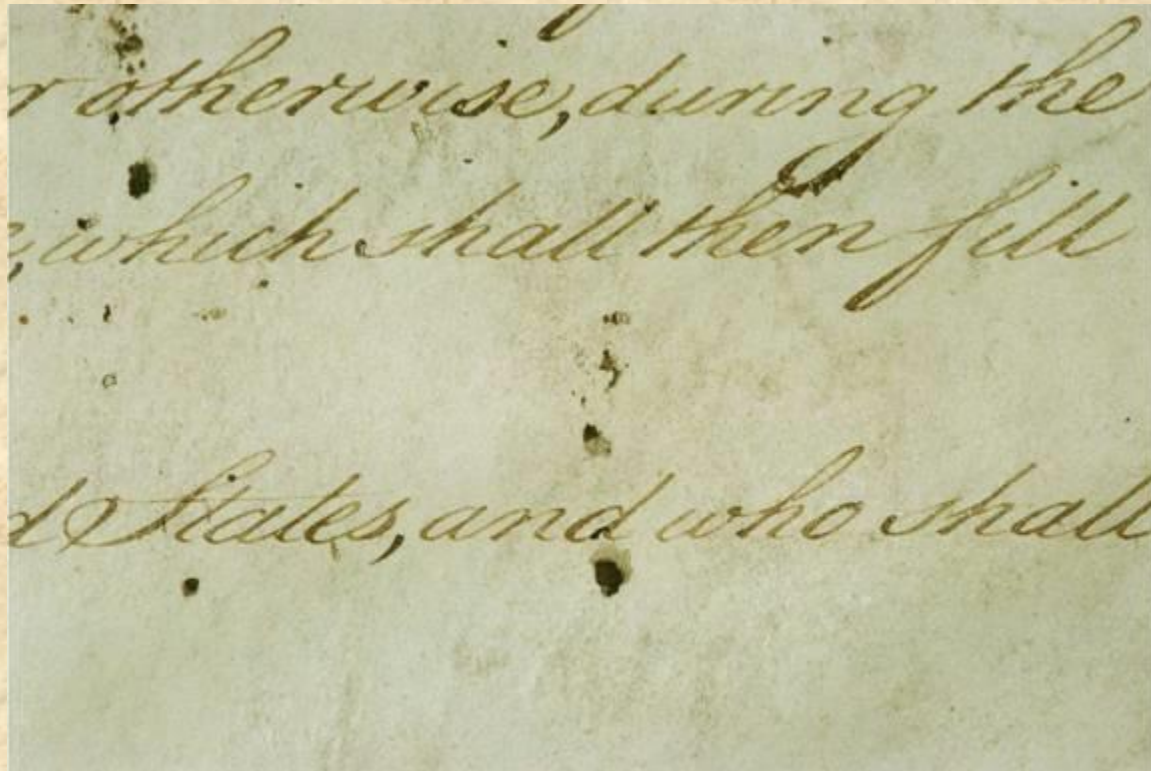
The Scribes

- Timothy Matlack
- Jacob Shallus
- William Lambert

Rule lines for the scribes



Ink smears, spatter, splotches

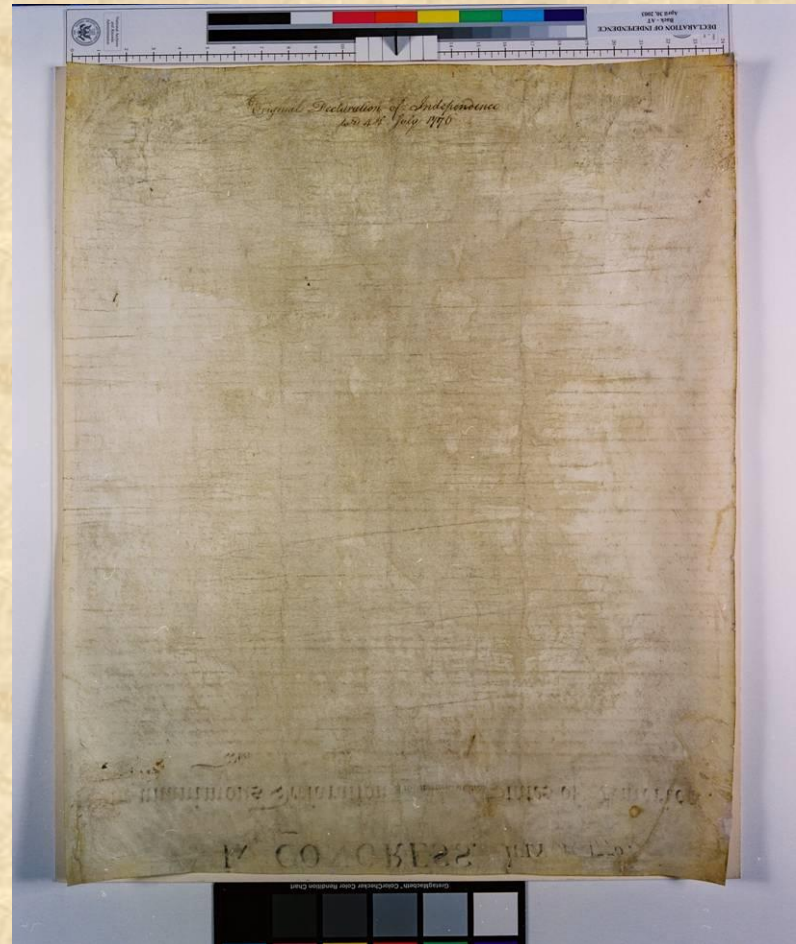


Erasures and corrections

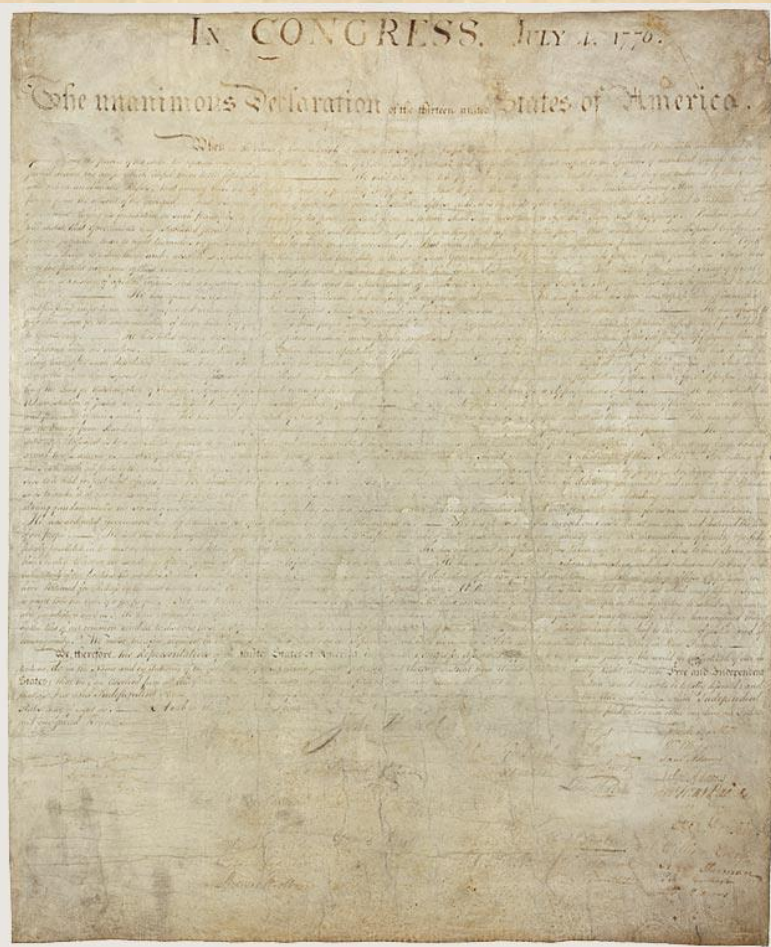
Session of their respective Houses,
any other Place.
No Senator or Represen
which shall have been created, or
States, shall be a Member of either
Section. p. All Bills for raising
Every Bill which shall

enate shall ha
istricted,
States, the Chie
ent in Cases

Evidence of rolling and folding

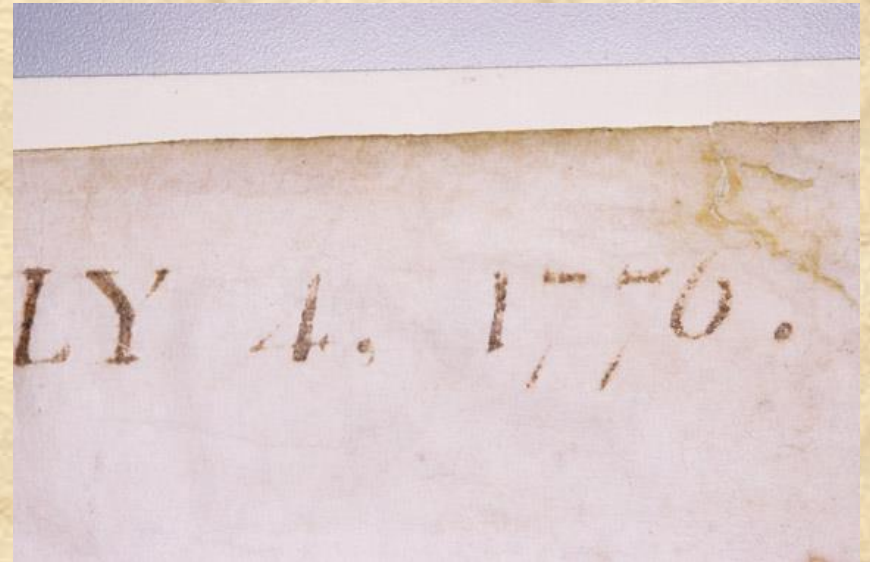


Engrained dirt and grime

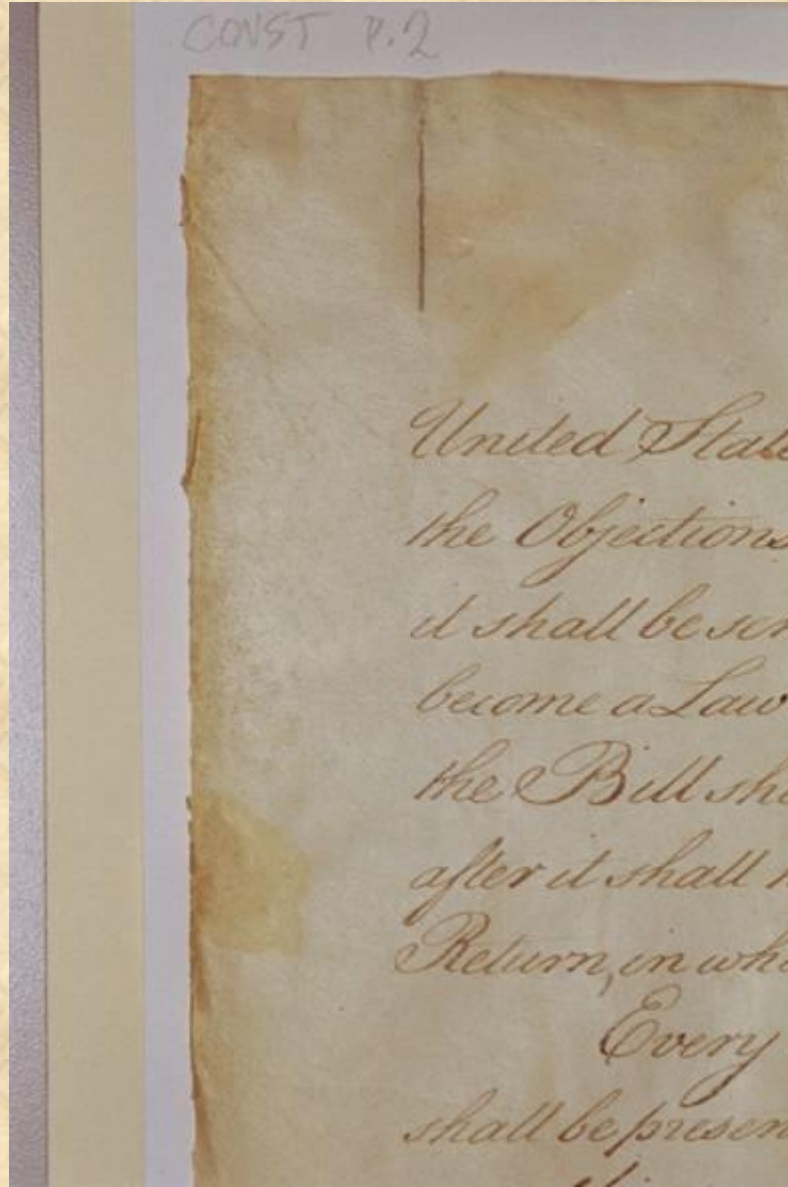


- Handprint
- Random marks
- Possible printer's ink

Evidence of trimming



Ragged edge



Evidence of mounting

- Y-shaped punctures
- Adhesive for mounting



Evidence of mounting

- Corner torn on Declaration in previous drum mount



Insect feeding

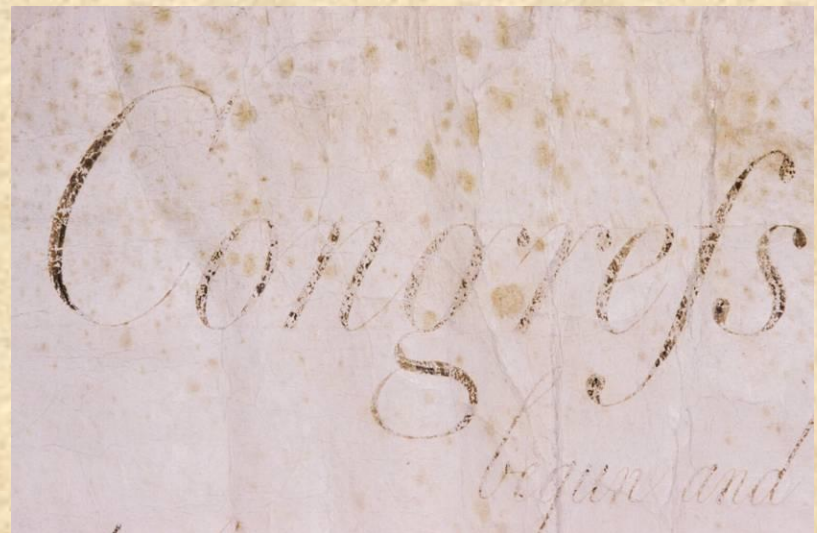
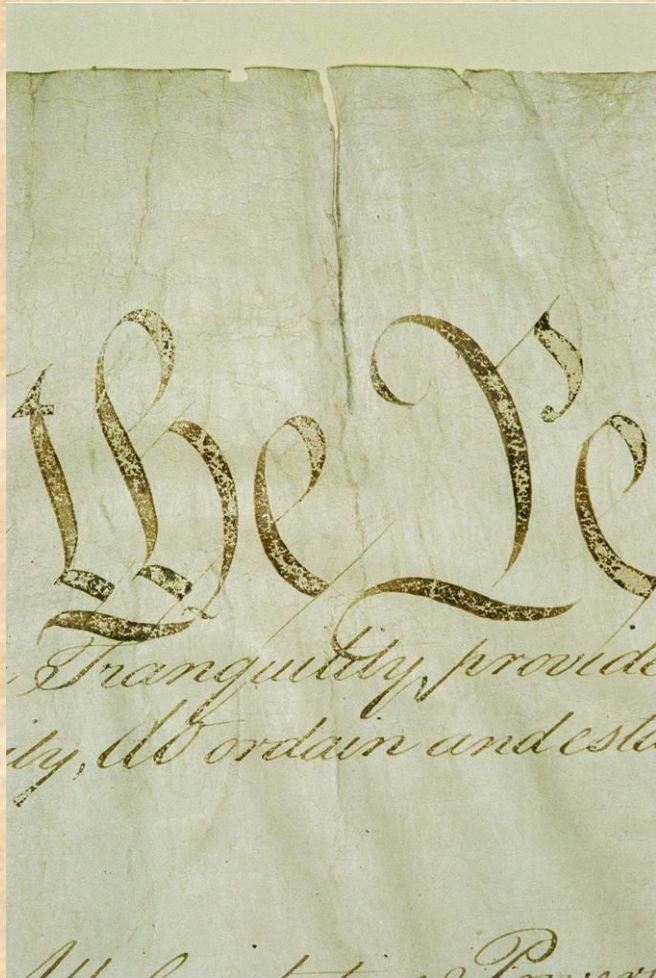


Examination

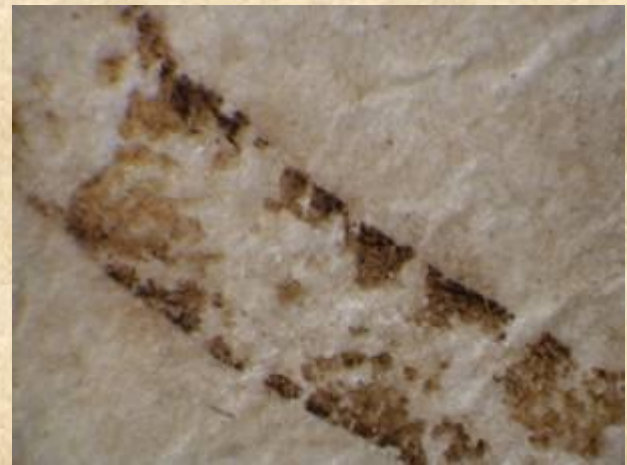
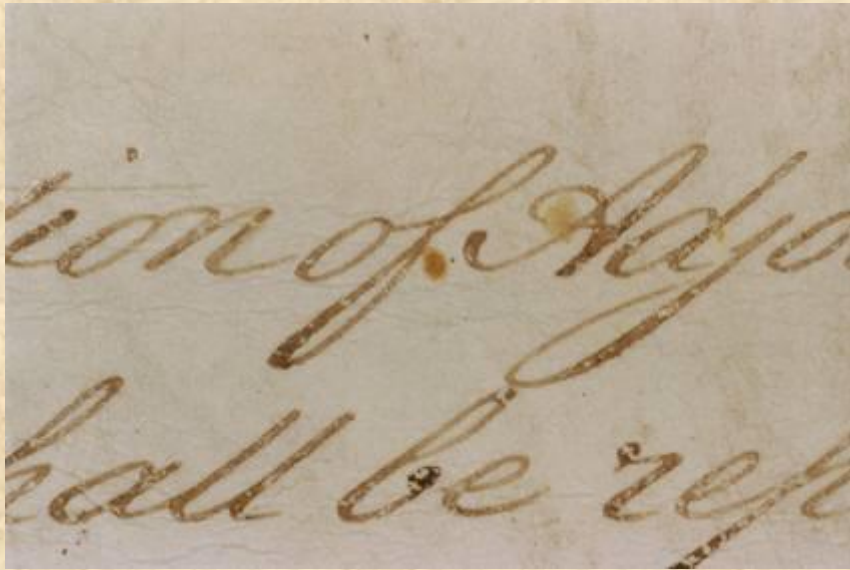
- Decisions about treatment steps
- Baseline measurements for the future
- Overlay maps for future reference
- Measuring thickness & dimensions



Ink characterization



Ink condition



Securing the ink

- Removing the cover glass
- Checking for any ink flakes



Ink consolidation

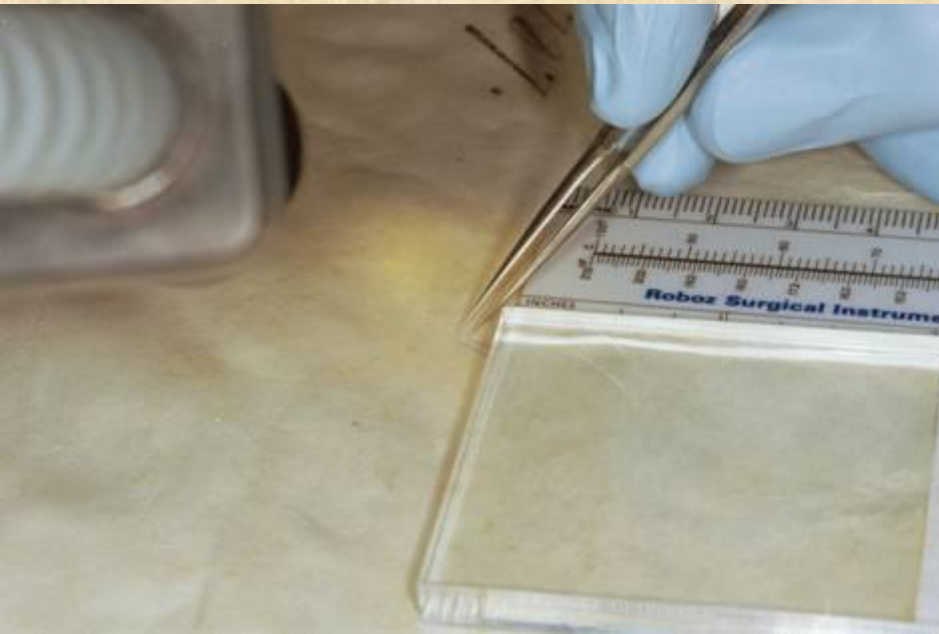


Ink identification

- Samples from nontextual ink spatter
- Indicator paper for presence of Fe^{+2}

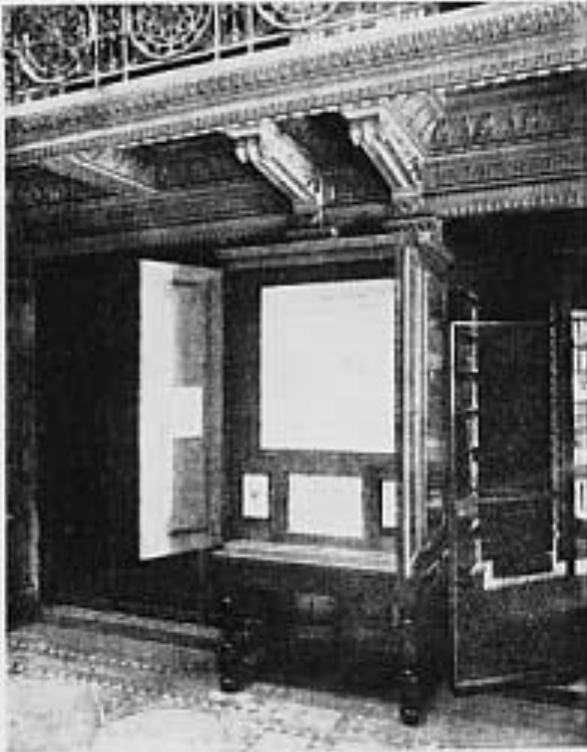


Parchment testing



- Baseline data
- Comparative state of preservation of the various parchments
- Shrinkage
Temperature determinations
- Gregory Young,
Canadian
Conservation Institute

Previous exhibition sites

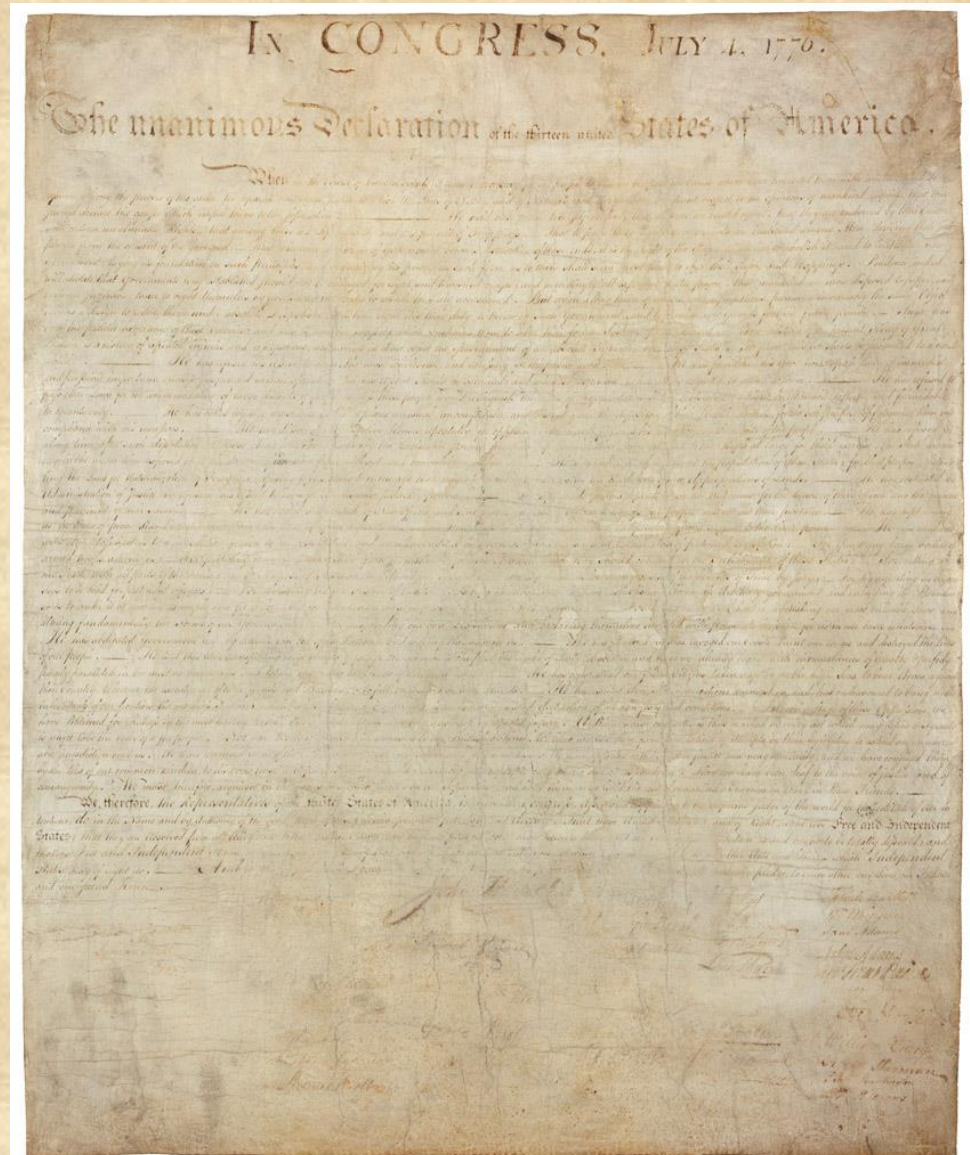


This is the case in the Library of the State Department at Washington, which all visitors see. The large document in the upper part of the case is the fac-simile of the Declaration of Independence, made some years ago, when the original was removed from this case to arrest the fading from exposure to light. Thomas Jefferson's original draft, shown above on this page, is the document directly under the centre of the fac-simile of the Declaration. The portrait to the left of the draft is an engraving of Jefferson; the document on the right of the draft is Jefferson's memorandum of the inscription which he wished placed on the simple shaft to be erected to his memory.



Condition of the Declaration

- Early accounts
- 1817 Richard Rush, Acting Secretary of State
- 1819 John Quincy Adams, Secretary of State

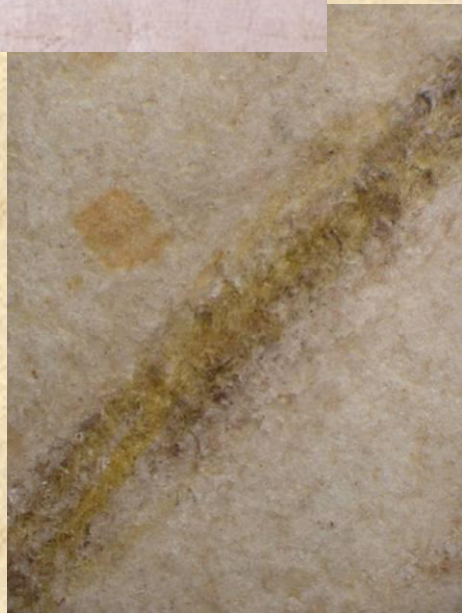


Light damage?

able jurisdiction over us. We have submitted to it by the ties of our common kindred, to divorce thro' a distant consanguinity. We must, therefore, acquiesce in the same.

We, therefore, the Representatives of the United States, do in the name and by authority of the great Congress of the United States, do hereby resolve, that the said States be and they are dissolved from all things, and that they be and they are independent, equal, sovereign, free States, and shall remain so. — And that the same be and they are published to the world.

Signatures

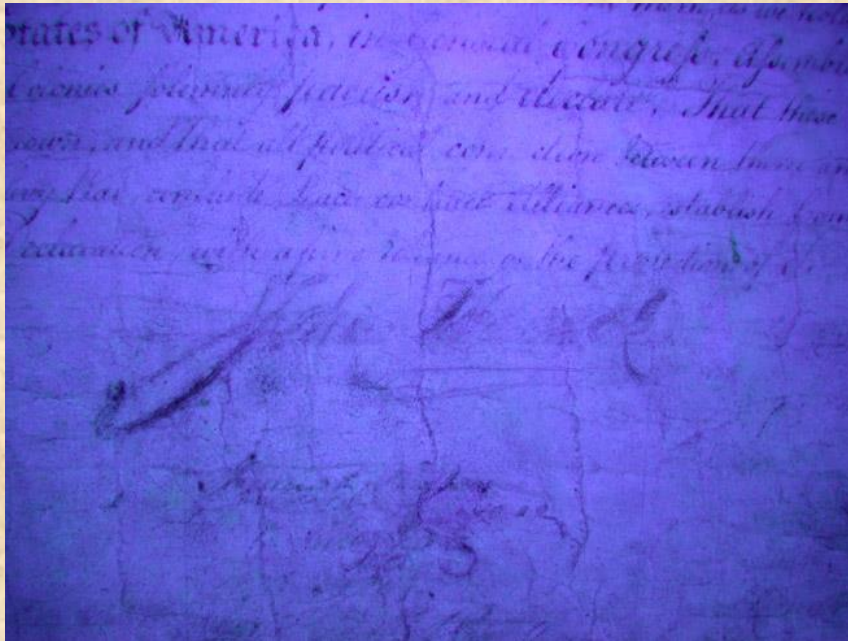


Water damage

could relinquish the
uncomfortable, and
rately, for of possin
flowers in
blossom, and
migrating
was
subscribed
I have



UV photography



Acknowledgements

- For help in preparing this talk, we thank the following colleagues
- Jana Dambrogio
- Michelle Facini
- Margaret Kelly
- Kathleen Ludwig
- Earl McDonald
- Susan Page
- Susan Peckham
- Jeffrey Reed