

Please note that the Native Communities research guides were created in 2018 to help users search the [National Archives Catalog](#) for records relating to Native American communities. The guides are under review, and new versions may be released as information is updated.



National Archives online catalog search term ideas and Citizen Archivist Codes for the

## **NATIVE PEOPLE OF THE DESERT SOUTHWEST**

### **Research Guides for both historic and modern Native Communities relating to records held at the National Archives**



#### **Arizona**

[Introduction Page](#)

[Historic Native Communities](#)

[Modern Native Communities](#)

#### **New Mexico**

[Introduction Page](#)

[Historic Native Communities](#)

[Modern Native Communities](#)

#### **Texas**

[Introduction Page](#)

[Historic Native Communities](#)

[Modern Native Communities](#)

### **Sample Document**



Navajo Weaver, ca. 1900-1957. National Archives. <https://catalog.archives.gov/id/523806>

# Arizona Native Communities

To perform a search of more general records of Arizona's Native People in the [National Archives Online Catalog](#), use **Advanced Search**. Enter **Arizona** in the search box and **75** in the Record Group box (Bureau of Indian Affairs). Other Record Groups can be entered with **Arizona** or **Arizona Indian** in **separate** searches, including Record Groups **11** (General Records of the United States Government) or **435** (Records of the Indian Arts and Crafts Board.)

There are several great resources available for general information and material for kids about the Native People of Arizona, such as the [Native Languages](#) and [National Museum of the American Indian](#) websites. Type **Arizona** into the main search box for both.

Related state agencies and universities may also hold records or information about these communities. Examples might include the [Arizona State Library, Archives and Public Records](#), [The Arizona Experience](#), and [the Heard Museum](#).

---

## Historic Arizona Native Communities

---

### Federally Recognized Native Communities in Arizona (2018)

[Ak-Chin Indian Community](#)

[Cocopah Tribe of Arizona](#)

[Colorado River Indian Tribes of the Colorado River Indian Reservation, Arizona and California](#)

[Fort McDowell Yavapai Nation, Arizona](#)

[Fort Mojave Indian Tribe of Arizona, California & Nevada](#)

[Gila River Indian Community of the Gila River Indian Reservation, Arizona](#)

[Havasupai Tribe of the Havasupai Reservation, Arizona](#)

[Hopi Tribe of Arizona](#)

[Hualapai Indian Tribe of the Hualapai Indian Reservation, Arizona](#)

[Kaibab Band of Paiute Indians of the Kaibab Indian Reservation, Arizona](#)

[Navajo Nation, Arizona, New Mexico & Utah](#)

[Pascua Yaqui Tribe of Arizona](#)

[Quechan Tribe of the Fort Yuma Indian Reservation, California & Arizona](#)

[Salt River Pima-Maricopa Indian Community of the Salt River Reservation, Arizona](#)

[San Carlos Apache Tribe of the San Carlos Reservation, Arizona](#)

[San Juan Southern Paiute Tribe of Arizona](#)

[Tohono O'odham Nation of Arizona](#)

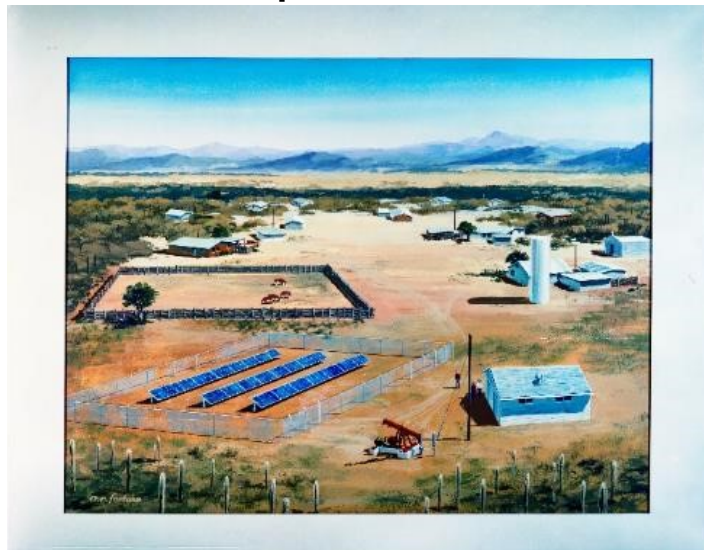
[Tonto Apache Tribe of Arizona](#)

[White Mountain Apache Tribe of the Fort Apache Reservation, Arizona](#)

[Yavapai-Apache Nation of the Camp Verde Indian Reservation, Arizona](#)

[Yavapai-Prescott Indian Tribe](#)

### Sample Document



Drawing of the Papago Indian Village in Arizona. National Archives. <https://catalog.archives.gov/id/17427472>

## Historic Arizona Native Communities

For a map of historic language areas in Arizona, see [Native Languages](#).

**Instructions:** Slashes separate search terms and phrases. **Copy and paste exact phrase** into the [Online Catalog](#), including quotation marks, if present. Always be willing to experiment with search terms. Quoted phrases return very different results than non-quoted phrases. Using the geographic location or most relevant word(s) from the tribal name with one of the following words may also prove beneficial: **Indian** (most useful), **Native**, **Tribe**, **Reservation**, or **Village**. Be sure to link to modern tribal pages. They contain current information and more possible search terms.

Historic Tribes	Suggested Online Catalog search terms	Associated Federally Recognized Tribal Communities 2018
Akimel O'odham (Pima) Indians	Pima Indian / O'Odham / "Ak-Chin" / "Tohono O'odham" Indian	Arizona: <a href="#">Ak-Chin Indian Community</a> <a href="#">Salt River Pima-Maricopa Indian Community of the Salt River Reservation, Arizona</a> <a href="#">Tohono O'odham Nation of Arizona</a>
Chiricahua Apache	Chiricahua NOT frog / Apache Indian / "Fort Sill" Apache / Mescalero Reservation	Oklahoma: <a href="#">Fort Sill Apache Tribe of Oklahoma (See Home Page for Central Plains)</a> New Mexico: <a href="#">Mescalero Apache Tribe of the Mescalero Reservation, New Mexico</a>
Cocopah	Cocopah	Arizona: <a href="#">Cocopah Tribe of Arizona</a>
Halchidhoma	"Maricopa Indian" / "Salt River" Indian	Arizona: <a href="#">Gila River Indian Community of the Gila River Indian Reservation, Arizona</a> <a href="#">Salt River Pima-Maricopa Indian Community of the Salt River Reservation, Arizona</a>
Havasupai	Havasupai Indian / "Havasupai Tribe"	Arizona: <a href="#">Havasupai Tribe of the Havasupai Reservation, Arizona</a>
Hopi	Hopi Indian / Moqui NOT "Puerto Rican" AND NOT State AND NOT "Moqui Lookout Cabin"	Arizona: <a href="#">Colorado River Indian Tribes of the Colorado River Indian Reservation, Arizona and California</a> <a href="#">Hopi Tribe of Arizona</a>
Hualapai	Hualapai NOT Personnel AND NOT Federal Reserve / Walapai	Arizona: <a href="#">Hualapai Indian Tribe of the Hualapai Indian Reservation, Arizona</a>
Jano	<b>No Federal Government records are available.</b>	<b>Some Apache claim Suma and Jano ancestry.</b>
Maricopa	"Maricopa Indian" / "Salt River" Indian / "Gila River" Indian	Arizona: <a href="#">Gila River Indian Community of the Gila River Indian Reservation, Arizona</a> <a href="#">Salt River Pima-Maricopa Indian Community of the Salt River Reservation, Arizona</a>
Mohave	"Mohave Indian" / "Mojave Indian" / "Carlos Montezuma"	Arizona: <a href="#">Colorado River Indian Tribes of the Colorado River Indian Reservation, Arizona and California</a> <a href="#">Fort McDowell Yavapai Nation, Arizona</a> <a href="#">Fort Mojave Indian Tribe of Arizona, California &amp; Nevada</a>

Historic Tribes	Suggested Online Catalog search terms	Associated Federally Recognized Tribal Communities 2018
Moqui Pueblo	Moqui NOT "Puerto Rican" AND NOT State AND NOT "Moqui Lookout Cabin" / Hopi Indian	Arizona: <a href="#">Colorado River Indian Tribes of the Colorado River Indian Reservation, Arizona and California</a> <a href="#">Hopi Tribe of Arizona</a>
Navajo	"Navajo Indian" / "Navaho Indian" / "Navajo Nation" / "Navaho Nation" / "Colorado River Indian Tribes"	Arizona: <a href="#">Colorado River Indian Tribes of the Colorado River Indian Reservation, Arizona and California</a> <a href="#">Navajo Nation, Arizona, New Mexico &amp; Utah</a>
Southern Paiute	"Southern Paiute" / Paiute Indian NOT Defense / "Pah-Ute"	Arizona: <a href="#">Kaibab Band of Paiute Indians of the Kaibab Indian Reservation, Arizona</a> <a href="#">San Juan Southern Paiute Tribe of Arizona</a> Nevada: <a href="#">Las Vegas Tribe of Paiute Indians of the Las Vegas Indian Colony, Nevada (See Home Page for California-Nevada)</a> <a href="#">Moapa Band of Paiute Indians of the Moapa River Indian Reservation, Nevada (See Home Page for California-Nevada)</a> Utah: <a href="#">Paiute Indian Tribe of Utah (See Home Page for Northern Plateau)</a>
Tohono O'odham (Papago)	Tohono O'odham / Papago Indian	Arizona: <a href="#">Tohono O'odham Nation of Arizona</a>
Western Apache	"Western Apache" / "San Carlos Reservation" / "San Carlos Apache" / "Fort Apache Reservation" / "White Mountain Apache" / "Tonto Apache" / "Camp Verde Reservation" / "Yavapai-Apache" / "Fort McDowell" Reservation NOT "Master File" / "Ft McDowell" Indian	Arizona: <a href="#">Fort McDowell Yavapai Nation, Arizona</a> <a href="#">San Carlos Apache Tribe of the San Carlos Reservation, Arizona</a> <a href="#">Tonto Apache Tribe of Arizona</a> <a href="#">White Mountain Apache Tribe of the Fort Apache Reservation, Arizona</a> <a href="#">Yavapai-Apache Nation of the Camp Verde Indian Reservation, Arizona</a>
Yaqui	Yaqui Indian	Arizona: <a href="#">Gila River Indian Community of the Gila River Indian Reservation, Arizona</a> <a href="#">Pascua Yaqui Tribe of Arizona</a>
Yavapai	Yavapai NOT County	Arizona: <a href="#">Fort McDowell Yavapai Nation, Arizona</a> <a href="#">Yavapai-Apache Nation of the Camp Verde Indian Reservation, Arizona</a> <a href="#">Yavapai-Prescott Indian Tribe</a>
Yuma	Quechan / "Yuma Indian"	Arizona and California: <a href="#">Quechan Tribe of the Fort Yuma Indian Reservation, California &amp; Arizona</a>
Zuni	Zuni Indian/ "Zuni Pueblo"	New Mexico: <a href="#">Zuni Tribe of the Zuni Reservation, New Mexico</a>

## Ak-Chin Indian Community

**Tohono O'odham (Papago) and Akimel O'odham (Pima) and Hia C-eḍ O'odham (Areneños Papago)**

To hear modern Native Community names spoken aloud, see [National Indian Law Library](#).

**Always consult the Native People themselves for most accurate information, either through their website or in person.**

**Current Community Headquarters:** **Maricopa, Arizona**

**Citizen Archivist Catalog Tag:** **NT247**

To find documents already tagged, copy and paste this tag into the [Advanced Online Catalog Search Form](#) in the "Tags" box. If documents are not tagged or you wish to contribute, see the [Citizen Archivist Program](#).

**Personal archival assistance:**

For additional help in finding records of the Ak-Chin Community, email the archivists at the National Archives at Riverside ([riverside.archives@nara.gov](mailto:riverside.archives@nara.gov)), the National Archives at Denver ([denver.archives@nara.gov](mailto:denver.archives@nara.gov)), or contact the [National Archives in Washington D.C.](#) Organizations listed on the [Arizona Native Communities](#) page may also provide research assistance.

**Searching in the [National Archives Online Catalog](#)**

**Slashes (/) separate individual search strings.** Copy and paste or type exactly, including quotation marks if present. Also, try using a word from each of the community's other names and locations. See associated video for more detailed instructions.

**Suggested Search Terms:** **"Ak-Chin" / Maricopa Indian NOT County**

**Related Searches:** **"Pinal County" Arizona**

**This community may also have been recorded as:** **Ak Chin / Maricopa / Ak Chin Indian Community of the Maricopa (Ak Chin) Indian Reservation, Arizona / Ak Chin (Maricopa) Indian Reservation**

---

**Additional Resources:** The following sources may provide important background information and ideas for additional search terms.

**Ak-Chin website:** <http://www.ak-chin.nsn.us/>

**Wikipedia (general information only):** [https://en.wikipedia.org/wiki/Ak-Chin\\_Indian\\_Community](https://en.wikipedia.org/wiki/Ak-Chin_Indian_Community) and [https://en.wikipedia.org/wiki/Tohono\\_O%27odham](https://en.wikipedia.org/wiki/Tohono_O%27odham) [https://en.wikipedia.org/wiki/Pima\\_people](https://en.wikipedia.org/wiki/Pima_people) and [https://en.wikipedia.org/wiki/Hia\\_C-e%27odham](https://en.wikipedia.org/wiki/Hia_C-e%27odham)

**Also see:** Inter-Tribal Council of Arizona: [http://itcaonline.com/?page\\_id=1146](http://itcaonline.com/?page_id=1146)

**Links to additional information (search each by tribe name):**

Federal Register (recent rulings and issues): <https://www.federalregister.gov/>

Native Languages: <http://www.native-languages.org>

National Indian Law Library: <http://www.narf.org/nill/tribes/>

American Philosophical Society Indigenous Subject Guide: <https://search.amphilsoc.org/natam/search>

Library of Congress: <https://www.loc.gov/>

---

**Bureau of Indian Affairs (BIA) Records (Record Group 75):**

To focus on BIA records in the Online Catalog, use "advanced search" and enter 75 into the Record Group field.

Although important, the BIA is only one of many Federal agencies containing important records of Native Communities. For various reasons there are often periods of time where BIA records are not available for individual tribes. Other techniques should be used for these periods, such as searching by geographic area and/or time-period and widening the search to include ALL Federal agencies.

Community records could also be "buried" in BIA agency files not described in the Online Catalog in great enough detail to be searched directly by community name. Doing an advanced search using one or two words from the BIA office name or the entire office name in quotes, along with Record Group 75, may be beneficial. Some BIA offices known to hold **Ak-Chin** records follow:

1849-1864 New Mexico Superintendency, 1863-1873 Arizona Superintendency, 1888-1954 Pima Agency, 1927-1970 Phoenix Area Office

# Cocopah Tribe of Arizona

## Cocopah

To hear modern Native Community names spoken aloud, see [National Indian Law Library](#).

**Always consult the Native People themselves for most accurate information, either through their website or in person.**

**Current Community Headquarters:** **Somerton, Arizona**

### Citizen Archivist Catalog Tag: **NT248**

To find documents already tagged, copy and paste this tag into the [Advanced Online Catalog Search Form](#) in the "Tags" box. If documents are not tagged or you wish to contribute, see the [Citizen Archivist Program](#).

### Personal archival assistance:

For additional help in finding records of the Cocopah Community, email the archivists at the National Archives at Riverside ([riverside.archives@nara.gov](mailto:riverside.archives@nara.gov)) or contact the [National Archives in Washington D.C.](#) Organizations listed on the [Arizona Native Communities](#) page may also provide research assistance.

### Searching in the [National Archives Online Catalog](#)

**Slashes (/) separate individual search strings.** Copy and paste or type exactly, including quotation marks if present. Also, try using a word from each of the community's other names and locations. See associated video for more detailed instructions.

**Suggested Search Terms:** **Cocopah NOT School AND NOT Street AND NOT Court / "Camp Independence" Arizona**

**Related Searches:** **"Yuma County" Arizona**

**This community may also have been recorded as:**

**Cocopah / Cocopá / Kwapa / Kwii Capáy / "River People" / Cocopah Indian Reservations / North Cocopah Reservation / West Cocopah Reservation / East Cocopah Reservation**

---

**Additional Resources:** The following sources may provide important background information and ideas for additional search terms.

**Cocopah** website: <http://www.cocopah.com/>

**Wikipedia (general information only):** <https://en.wikipedia.org/wiki/Cocopah> and [https://en.wikipedia.org/wiki/Cocopah\\_Indian\\_Reservation](https://en.wikipedia.org/wiki/Cocopah_Indian_Reservation)

**Also see:** Inter-Tribal Council of Arizona: [http://itcaonline.com/?page\\_id=1150](http://itcaonline.com/?page_id=1150)

**Links to additional information (search each by tribe name):**

Federal Register (recent rulings and issues): <https://www.federalregister.gov/>

Native Languages: <http://www.native-languages.org>

National Indian Law Library: <http://www.narf.org/nill/tribes/>

American Philosophical Society Indigenous Subject Guide: <https://search.amphilsoc.org/natam/search>

Library of Congress: <https://www.loc.gov/>

---

### Bureau of Indian Affairs (BIA) Records (Record Group 75):

To focus on BIA records in the Online Catalog, use "advanced search" and enter 75 into the Record Group field.

Although important, the BIA is only one of many Federal agencies containing important records of Native Communities. For various reasons there are often periods of time where BIA records are not available for individual tribes. Other techniques should be used for these periods, such as searching by geographic area and/or time-period and widening the search to include ALL Federal agencies.

Community records could also be "buried" in BIA agency files not described in the Online Catalog in great enough detail to be searched directly by community name. Doing an advanced search using one or two words from the BIA office name or the entire office name in quotes, along with Record Group 75, may be beneficial. Some BIA offices known to hold **Cocopah** records follow:

1849-1864 New Mexico Superintendency, 1863-1873 Arizona Superintendency, 1879-1975 Fort Yuma Agency, 1929-1974 Phoenix Area Office

# Colorado River Indian Tribes of the Colorado River Indian Reservation, Arizona and California

## Chemuehuevi, Mohave, Hopi, and Navajo

To hear modern Native Community names spoken aloud, see [National Indian Law Library](#).

**Always consult the Native People themselves for most accurate information, either through their website or in person.**

**Current Community Headquarters:** **Parker, Arizona**

### Citizen Archivist Catalog Tag: **NT238**

To find documents already tagged, copy and paste this tag into the [Advanced Online Catalog Search Form](#) in the "Tags" box. If documents are not tagged or you wish to contribute, see the [Citizen Archivist Program](#).

### Personal archival assistance:

For additional help in finding records of the Colorado River Tribal Community, email the archivists at the National Archives at Riverside ([riverside.archives@nara.gov](mailto:riverside.archives@nara.gov)), the National Archives at Seattle ([seattle.archives@nara.gov](mailto:seattle.archives@nara.gov)), or contact the [National Archives in Washington D.C.](#) Organizations listed on the [Arizona Native Communities](#) page may also provide research assistance.

### Searching in the [National Archives Online Catalog](#)

Slashes (/) separate individual search strings. Copy and paste or type exactly, including quotation marks if present. Also, try using a word from each of the community's other names and locations. See associated video for more detailed instructions.

**Suggested Search Terms:** **"Colorado River Tribe" / "Colorado River" Indian NOT Commerce**

**Related Searches:** **"La Paz County" Arizona / "San Bernardino County" California / "Riverside County" California**

**This community may also have been recorded as:**  
**Colorado River Tribes / Mohave, Chemehuevi, Hopi and Navajo Tribes / (also see Poston Japanese Internment Camp) / Colorado River Indian Tribes Reservation**

**Additional Resources:** The following sources may provide important background information and ideas for additional search terms.

Colorado River Tribal website: <http://www.crit-nsn.gov/>

Wikipedia (general information only): [https://en.wikipedia.org/wiki/Colorado\\_River\\_Indian\\_Tribes](https://en.wikipedia.org/wiki/Colorado_River_Indian_Tribes) and <https://en.wikipedia.org/wiki/Chemehuevi> and [https://en.wikipedia.org/wiki/Mohave\\_people](https://en.wikipedia.org/wiki/Mohave_people) and <https://en.wikipedia.org/wiki/Hopi> and <https://en.wikipedia.org/wiki/Navajo>

Also see: Inter-Tribal Council of Arizona at [http://itcaonline.com/?page\\_id=1152](http://itcaonline.com/?page_id=1152)

### Links to additional information (search each by tribe name):

Federal Register (recent rulings and issues): <https://www.federalregister.gov/>

Native Languages: <http://www.native-languages.org>

National Indian Law Library: <http://www.narf.org/nill/tribes/>

American Philosophical Society Indigenous Subject Guide: <https://search.amphilsoc.org/natam/search>

Library of Congress: <https://www.loc.gov/>

### Bureau of Indian Affairs (BIA) Records (Record Group 75):

To focus on BIA records in the Online Catalog, use "advanced search" and enter 75 into the Record Group field.

Although important, the BIA is only one of many Federal agencies containing important records of Native Communities. For various reasons there are often periods of time where BIA records are not available for individual tribes. Other techniques should be used for these periods, such as searching by geographic area and/or time-period and widening the search to include ALL Federal agencies.

Community records could also be "buried" in BIA agency files not described in the Online Catalog in great enough detail to be searched directly by community name. Doing an advanced search using one or two words from the BIA office name or the entire office name in quotes, along with Record Group 75, may be beneficial. Some BIA offices known to hold **Colorado River Tribal** records follow:

1849-1864 New Mexico Superintendency, 1863-1873 Arizona Superintendency, 1879-1975 Colorado River Agency, 1932-1937 Portland Area Office, 1946-1980 Phoenix Area Office



## Fort McDowell Yavapai Nation, Arizona

### Yavapai (Guwevkaɓaya) and Western Apache

To hear modern Native Community names spoken aloud, see [National Indian Law Library](#).

**Always consult the Native People themselves for most accurate information, either through their website or in person.**

**Current Community Headquarters:** **Fountain Hills, Arizona**

#### Citizen Archivist Catalog Tag: **NT242**

To find documents already tagged, copy and paste this tag into the [Advanced Online Catalog Search Form](#) in the "Tags" box. If documents are not tagged or you wish to contribute, see the [Citizen Archivist Program](#).

#### Personal archival assistance:

For additional help in finding records of the Fort McDowell Yavapai Community, email the archivists at the National Archives at Riverside ([riverside.archives@nara.gov](mailto:riverside.archives@nara.gov)) or contact the [National Archives in Washington D.C.](#) Organizations listed on the [Arizona Native Communities](#) page may also provide research assistance.

#### Searching in the [National Archives Online Catalog](#)

Slashes (/) separate individual search strings. Copy and paste or type exactly, including quotation marks if present. Also, try using a word from each of the community's other names and locations. See associated video for more detailed instructions.

**Suggested Search Terms:** "Fort McDowell" Indian NOT Personnel / "Apache Mojave" / McDowell "Tonto Apache"

**Related Searches:** "Maricopa County" Arizona

**This community may also have been recorded as:** Fort McDowell Mohave-Apache Community of the Fort McDowell Indian Reservation / Apache Mohave. Sometimes erroneously referred to as Mohave-Apache, Yuma-Apache, and Tonto-Apache./ Fort McDowell Mohave-Apache Reservation

**Additional Resources:** The following sources may provide important background information and ideas for additional search terms.

Fort McDowell Yavapai website: <https://www.fmyn.org/>

Wikipedia (general information only): [https://en.wikipedia.org/wiki/Fort\\_McDowell\\_Yavapai\\_Nation](https://en.wikipedia.org/wiki/Fort_McDowell_Yavapai_Nation) and [https://en.wikipedia.org/wiki/Yavapai#Fort\\_McDowell\\_Reservation](https://en.wikipedia.org/wiki/Yavapai#Fort_McDowell_Reservation) and [https://en.wikipedia.org/wiki/Western\\_Apache\\_people](https://en.wikipedia.org/wiki/Western_Apache_people)

Also see: Access Genealogy at <https://www.accessgenealogy.com/?s=yavapai> and Inter-Tribal Council of Arizona at [http://itcaonline.com/?page\\_id=1154](http://itcaonline.com/?page_id=1154)

#### Links to additional Information (search each by tribe name):

Federal Register (recent rulings and issues): <https://www.federalregister.gov/>

Native Languages: <http://www.native-languages.org>

National Indian Law Library: <http://www.narf.org/nill/tribes/>

American Philosophical Society Indigenous Subject Guide: <https://search.amphilsoc.org/natam/search>

Library of Congress: <https://www.loc.gov/>

#### Bureau of Indian Affairs (BIA) Records (Record Group 75):

To focus on BIA records in the Online Catalog, use "advanced search" and enter 75 into the Record Group field.

Although important, the BIA is only one of many Federal agencies containing important records of Native Communities. For various reasons there are often periods of time where BIA records are not available for individual tribes. Other techniques should be used for these periods, such as searching by geographic area and/or time-period and widening the search to include ALL Federal agencies.

Community records could also be "buried" in BIA agency files not described in the Online Catalog in great enough detail to be searched directly by community name. Doing an advanced search using one or two words from the BIA office name or the entire office name in quotes, along with Record Group 75, may be beneficial. Some BIA offices known to hold **Fort McDowell Yavapai** records follow:

1849-1864 New Mexico Superintendency, 1863-1873 Arizona Superintendency, 1930-1991 Salt River Agency, 1934-1973 Phoenix Area Office

# Fort Mojave Indian Tribe of Arizona, California & Nevada

## Mohave

To hear modern Native Community names spoken aloud, see [National Indian Law Library](#).

**Always consult the Native People themselves for most accurate information, either through their website or in person.**

**Current Community Headquarters:** **Needles, California**

### Citizen Archivist Catalog Tag: **NT244b**

To find documents already tagged, copy and paste this tag into the [Advanced Online Catalog Search Form](#) in the "Tags" box. If documents are not tagged or you wish to contribute, see the [Citizen Archivist Program](#).

### Personal archival assistance:

For additional help in finding records of the Fort Mojave Tribal Community, email the archivists at the National Archives at Riverside ([riverside.archives@nara.gov](mailto:riverside.archives@nara.gov)) or contact the [National Archives in Washington D.C.](#) Organizations listed on the [Arizona Native Communities](#) page may also provide research assistance.

### Searching in the [National Archives Online Catalog](#)

**Slashes (/) separate individual search strings.** Copy and paste or type exactly, including quotation marks if present. Also, try using a word from each of the community's other names and locations. See associated video for more detailed instructions.

**Suggested Search Terms:** **"Fort Mojave" tribe / "Fort Mohave" tribe**

**Related Searches:** **"Mohave County" Arizona / "San Bernardino County" California / "Clark County" Nevada**

**This community may also have been recorded as:** **Movaje / Fort Mojave Indian Reservation / Camp Colorado / Fort Mohave Reservation**

---

**Additional Resources:** The following sources may provide important background information and ideas for additional search terms.

Fort Mojave website: <http://mojaveindiantribe.com/>

Wikipedia (general information only): [https://en.wikipedia.org/wiki/Fort\\_Mojave\\_Indian\\_Reservation](https://en.wikipedia.org/wiki/Fort_Mojave_Indian_Reservation) and [https://en.wikipedia.org/wiki/Mohave\\_people](https://en.wikipedia.org/wiki/Mohave_people)

Also see: [http://itcaonline.com/?page\\_id=1156](http://itcaonline.com/?page_id=1156)

**Links to additional information (search each by tribe name):**

Federal Register (recent rulings and issues): <https://www.federalregister.gov/>

Native Languages: <http://www.native-languages.org>

National Indian Law Library: <http://www.narf.org/nill/tribes/>

American Philosophical Society Indigenous Subject Guide: <https://search.amphilsoc.org/natam/search>

Library of Congress: <https://www.loc.gov/>

---

### Bureau of Indian Affairs (BIA) Records (Record Group 75):

To focus on BIA records in the Online Catalog, use "advanced search" and enter 75 into the Record Group field.

Although important, the BIA is only one of many Federal agencies containing important records of Native Communities. For various reasons there are often periods of time where BIA records are not available for individual tribes. Other techniques should be used for these periods, such as searching by geographic area and/or time-period and widening the search to include ALL Federal agencies.

Community records could also be "buried" in BIA agency files not described in the Online Catalog in great enough detail to be searched directly by community name. Doing an advanced search using one or two words from the BIA office name or the entire office name in quotes, along with Record Group 75, may be beneficial. Some BIA offices known to hold **Fort Mojave** records follow:

1849-1864 New Mexico Superintendency, 1863-1873 Arizona Superintendency, 1906-1931 Fort Mojave Subagency and School, 1929-1974 Phoenix Area Office

# Gila River Indian Community of the Gila River Indian Reservation, Arizona

## Akimel O'odham (Pima) and Maricopa (Piipaash)

To hear modern Native Community names spoken aloud, see [National Indian Law Library](#).

**Always consult the Native People themselves for most accurate information, either through their website or in person.**

**Current Community Headquarters:** [Sacaton, Arizona](#)

### Citizen Archivist Catalog Tag: **NT250**

To find documents already tagged, copy and paste this tag into the [Advanced Online Catalog Search Form](#) in the "Tags" box. If documents are not tagged or you wish to contribute, see the [Citizen Archivist Program](#).

### Personal archival assistance:

For additional help in finding records of the Gila River Community, email the archivists at the National Archives at Riverside ([riverside.archives@nara.gov](mailto:riverside.archives@nara.gov)) or contact the [National Archives in Washington D.C.](#) Organizations listed on the [Arizona Native Communities](#) page may also provide research assistance.

### Searching in the [National Archives Online Catalog](#)

Slashes (/) separate individual search strings. Copy and paste or type exactly, including quotation marks if present. Also, try using a word from each of the community's other names and locations. See associated video for more detailed instructions.

**Suggested Search Terms:** "Gila River" Indian Arizona / "Gila River Indian"

**Related Searches:** "Pinal County" Arizona / "Maricopa County" Arizona

**This community may also have been recorded as:** [Gila River Tribes / Pima-Maricopa / "Pee Posh" \(Maricopa\) and Akimel O'otham \(Pima\) / Gila River Reservation](#)

---

**Additional Resources:** The following sources may provide important background information and ideas for additional search terms.

Gila River website: <http://www.gilariver.org/>

Wikipedia (general information only): [https://en.wikipedia.org/wiki/Gila\\_River\\_Indian\\_Community](https://en.wikipedia.org/wiki/Gila_River_Indian_Community) and [https://en.wikipedia.org/wiki/Pima\\_people](https://en.wikipedia.org/wiki/Pima_people) and [https://en.wikipedia.org/wiki/Maricopa\\_people](https://en.wikipedia.org/wiki/Maricopa_people)

Also see: Inter-Tribal Council of Arizona at [http://itcaonline.com/?page\\_id=1158](http://itcaonline.com/?page_id=1158)

### Links to additional Information (search each by tribe name):

Federal Register (recent rulings and issues): <https://www.federalregister.gov/>

Native Languages: <http://www.native-languages.org>

National Indian Law Library: <http://www.narf.org/nill/tribes/>

American Philosophical Society Indigenous Subject Guide: <https://search.amphilsoc.org/natam/search>

Library of Congress: <https://www.loc.gov/>

---

### Bureau of Indian Affairs (BIA) Records (Record Group 75):

To focus on BIA records in the Online Catalog, use "advanced search" and enter 75 into the Record Group field.

Although important, the BIA is only one of many Federal agencies containing important records of Native Communities. For various reasons there are often periods of time where BIA records are not available for individual tribes. Other techniques should be used for these periods, such as searching by geographic area and/or time-period and widening the search to include ALL Federal agencies.

Community records could also be "buried" in BIA agency files not described in the Online Catalog in great enough detail to be searched directly by community name. Doing an advanced search using one or two words from the BIA office name or the entire office name in quotes, along with Record Group 75, may be beneficial. Some BIA offices known to hold **Gila River** records follow:

1849-1864 New Mexico Superintendency, 1863-1873 Arizona Superintendency, 1888-1954 Pima Agency, 1927-1974 Phoenix Area Office

# Havasupai Tribe of the Havasupai Reservation, Arizona

## Havasupai

To hear modern Native Community names spoken aloud, see [National Indian Law Library](#).

**Always consult the Native People themselves for most accurate information, either through their website or in person.**

**Current Community Headquarters:** [Supai, Arizona](#)

### Citizen Archivist Catalog Tag: **NT232**

To find documents already tagged, copy and paste this tag into the [Advanced Online Catalog Search Form](#) in the "Tags" box. If documents are not tagged or you wish to contribute, see the [Citizen Archivist Program](#).

### Personal archival assistance:

For additional help in finding records of the Havasupai Community, email the archivists at the National Archives at Riverside ([riverside.archives@nara.gov](mailto:riverside.archives@nara.gov)) or contact the [National Archives in Washington D.C.](#) Organizations listed on the [Arizona Native Communities](#) page may also provide research assistance.

### Searching in the [National Archives Online Catalog](#)

**Slashes (/) separate individual search strings.** Copy and paste or type exactly, including quotation marks if present. Also, try using a word from each of the community's other names and locations. See associated video for more detailed instructions.

**Suggested Search Terms:** [Havasupi / Havasupai Reservation NOT Master / "Havasupai Indian" NOT Master](#)

**Related Searches:** ["Coconino County" Arizona](#)

**This community may also have been recorded as:**  
[Havasupai / Supai Arizona / Havsuw' Baaja / People of the Blue-Green Water / Havasupi / Havasupai Reservation](#)

---

**Additional Resources:** The following sources may provide important background information and ideas for additional search terms.

Havasupai website: <http://theofficialhavasupaitribe.com/>

**Wikipedia (general information only):** <https://en.wikipedia.org/wiki/Havasupai> and [https://en.wikipedia.org/wiki/Havasupai\\_Indian\\_Reservation](https://en.wikipedia.org/wiki/Havasupai_Indian_Reservation)

**Also see:** Inter-Tribal Council of Arizona at [http://itcaonline.com/?page\\_id=1160](http://itcaonline.com/?page_id=1160)

**Links to additional Information (search each by tribe name):**

Federal Register (recent rulings and issues): <https://www.federalregister.gov/>

Native Languages: <http://www.native-languages.org>

National Indian Law Library: <http://www.narf.org/nill/tribes/>

American Philosophical Society Indigenous Subject Guide: <https://search.amphilsoc.org/natam/search>

Library of Congress: <https://www.loc.gov/>

---

### Bureau of Indian Affairs (BIA) Records (Record Group 75):

To focus on BIA records in the Online Catalog, use "advanced search" and enter 75 into the Record Group field.

Although important, the BIA is only one of many Federal agencies containing important records of Native Communities. For various reasons there are often periods of time where BIA records are not available for individual tribes. Other techniques should be used for these periods, such as searching by geographic area and/or time-period and widening the search to include ALL Federal agencies.

Community records could also be "buried" in BIA agency files not described in the Online Catalog in great enough detail to be searched directly by community name. Doing an advanced search using one or two words from the BIA office name or the entire office name in quotes, along with Record Group 75, may be beneficial. Some BIA offices known to hold **Havasupai** records follow:

1849-1864 New Mexico Superintendency, 1863-1873 Arizona Superintendency, 1888-1993 Truxton Canyon Agency, 1932-1953 Phoenix Area Office

# Hopi Tribe of Arizona

## Hopi Pueblo

To hear modern Native Community names spoken aloud, see [National Indian Law Library](#).

**Always consult the Native People themselves for most accurate information, either through their website or in person.**

**Current Community Headquarters:** [Kykotsmovi, Arizona](#)

**Citizen Archivist Catalog Tag:** [NT249](#)

To find documents already tagged, copy and paste this tag into the [Advanced Online Catalog Search Form](#) in the "Tags" box. If documents are not tagged or you wish to contribute, see the [Citizen Archivist Program](#).

### Personal archival assistance:

For additional help in finding records of the Hopi Community, email the archivists at the National Archives at Riverside ([riverside.archives@nara.gov](mailto:riverside.archives@nara.gov)), the National Archives at Denver ([denver.archives@nara.gov](mailto:denver.archives@nara.gov)), or contact the [National Archives in Washington D.C.](#) Organizations listed on the [Arizona Native Communities](#) page may also provide research assistance.

**Searching in the [National Archives Online Catalog](#)**

**Slashes (/) separate individual search strings.** Copy and paste or type exactly, including quotation marks if present. Also, try using a word from each of the community's other names and locations. See associated video for more detailed instructions.

**Suggested Search Terms:** ["Hopi Indian" NOT Governments / "Hopi Pueblo"](#)

**Related Searches:** ["Coconino County" Arizona / "Navajo County" Arizona](#)

**This community may also have been recorded as:** [Hopi / Moqui / Hopituskwa / Hopituh Shi-nu-mu / Peaceful People / Hopi Reservation](#)

**Additional Resources:** The following sources may provide important background information and ideas for additional search terms.

Hopi website: <https://www.hopi-nsn.gov/>

**Wikipedia (general information only):** <https://en.wikipedia.org/wiki/Hopi> and [https://en.wikipedia.org/wiki/Hopi\\_Reservation](https://en.wikipedia.org/wiki/Hopi_Reservation) and <https://en.wikipedia.org/wiki/Puebloans> and [https://en.wikipedia.org/wiki/Uto-Aztecan\\_languages](https://en.wikipedia.org/wiki/Uto-Aztecan_languages)

**Also see:** [http://itcaonline.com/?page\\_id=1162](http://itcaonline.com/?page_id=1162) and Paul Kirchhoff, "Gatherers and Farmers in the Greater Southwest at A Problem in Classification", *American Anthropologist*, New Series, Vol. 56, No. 4, Southwest Issue (August 1954), pp. 529-550

### Links to additional information (search each by tribe name):

Federal Register (recent rulings and issues): <https://www.federalregister.gov/>

Native Languages: <http://www.native-languages.org>

National Indian Law Library: <http://www.narf.org/nill/tribes/>

American Philosophical Society Indigenous Subject Guide: <https://search.amphilsoc.org/natam/search>

Library of Congress: <https://www.loc.gov/>

### Bureau of Indian Affairs (BIA) Records (Record Group 75):

To focus on BIA records in the Online Catalog, use "advanced search" and enter 75 into the Record Group field.

Although important, the BIA is only one of many Federal agencies containing important records of Native Communities. For various reasons there are often periods of time where BIA records are not available for individual tribes. Other techniques should be used for these periods, such as searching by geographic area and/or time-period and widening the search to include ALL Federal agencies.

Community records could also be "buried" in BIA agency files not described in the Online Catalog in great enough detail to be searched directly by community name. Doing an advanced search using one or two words from the BIA office name or the entire office name in quotes, along with Record Group 75, may be beneficial. Some BIA offices known to hold Hopi records follow:

1849-1864 New Mexico Superintendency, 1863-1873 Arizona Superintendency, 1875-1919 Moqui Pueblo Agency, 1907-1956 Hopi Agency, 1929-1974 Phoenix Area Office

# Hualapai Indian Tribe of the Hualapai Indian Reservation, Arizona

## Hualapai

To hear modern Native Community names spoken aloud, see [National Indian Law Library](#).

**Always consult the Native People themselves for most accurate information, either through their website or in person.**

**Current Community Headquarters:** [Peach Springs, Arizona](#)

### Citizen Archivist Catalog Tag: **NT246**

To find documents already tagged, copy and paste this tag into the [Advanced Online Catalog Search Form](#) in the "Tags" box. If documents are not tagged or you wish to contribute, see the [Citizen Archivist Program](#).

### Personal archival assistance:

For additional help in finding records of the Hualapai Community, email the archivists at the National Archives at Riverside ([riverside.archives@nara.gov](mailto:riverside.archives@nara.gov)), the National Archives at Denver ([denver.archives@nara.gov](mailto:denver.archives@nara.gov)), or contact the [National Archives in Washington D.C.](#) Organizations listed on the [Arizona Native Communities](#) page may also provide research assistance.

### Searching in the [National Archives Online Catalog](#)

**Slashes (/) separate individual search strings.** Copy and paste or type exactly, including quotation marks if present. Also, try using a word from each of the community's other names and locations. See associated video for more detailed instructions.

**Suggested Search Terms:** [Hualapai NOT Personnel AND NOT Federal Reserve / Walapai](#)

**Related Searches:** ["Mohave County" Arizona / "Coconino County" Arizona / "Yavapai County" Arizona](#)

**This community may also have been recorded as:**  
[Hualapai / Walapai / Hualapai Reservation](#)

---

**Additional Resources:** The following sources may provide important background information and ideas for additional search terms.

Hualapai website: <http://hualapai-nsn.gov/>

Wikipedia (general information only): <https://en.wikipedia.org/wiki/Hualapai>

Also see: Inter-Tribal Council of Arizona at [http://itcaonline.com/?page\\_id=1164](http://itcaonline.com/?page_id=1164)

**Links to additional Information (search each by tribe name):**

Federal Register (recent rulings and issues): <https://www.federalregister.gov/>

Native Languages: <http://www.native-languages.org>

National Indian Law Library: <http://www.narf.org/nill/tribes/>

American Philosophical Society Indigenous Subject Guide: <https://search.amphilsoc.org/natam/search>

Library of Congress: <https://www.loc.gov/>

---

### Bureau of Indian Affairs (BIA) Records (Record Group 75):

To focus on BIA records in the Online Catalog, use "advanced search" and enter 75 into the Record Group field.

Although important, the BIA is only one of many Federal agencies containing important records of Native Communities. For various reasons there are often periods of time where BIA records are not available for individual tribes. Other techniques should be used for these periods, such as searching by geographic area and/or time-period and widening the search to include ALL Federal agencies.

Community records could also be "buried" in BIA agency files not described in the Online Catalog in great enough detail to be searched directly by community name. Doing an advanced search using one or two words from the BIA office name or the entire office name in quotes, along with Record Group 75, may be beneficial. Some BIA offices known to hold **Hualapai** records follow:

1849-1864: New Mexico Superintendency, 1863-1873: Arizona Superintendency, 1880-1993 Truxton Canyon Agency, 1927-1971 Phoenix Area Office

# Kaibab Band of Paiute Indians of the Kaibab Indian Reservation, Arizona

## Southern Paiute

To hear modern Native Community names spoken aloud, see [National Indian Law Library](#).

**Always consult the Native People themselves for most accurate information, either through their website or in person.**

**Current Community Headquarters:** **Fredonia, Arizona**

### Citizen Archivist Catalog Tag: **NT234**

To find documents already tagged, copy and paste this tag into the [Advanced Online Catalog Search Form](#) in the "Tags" box. If documents are not tagged or you wish to contribute, see the [Citizen Archivist Program](#).

### Personal archival assistance:

For additional help in finding records of the Kaibab Paiute Community, email the archivists at the National Archives at Riverside ([riverside.archivists@nara.gov](mailto:riverside.archivists@nara.gov)) or contact the [National Archives in Washington D.C.](#) Organizations listed on the [Arizona Native Communities](#) page may also provide research assistance.

### Searching in the [National Archives Online Catalog](#)

Slashes (/) separate individual search strings. Copy and paste or type exactly, including quotation marks if present. Also, try using a word from each of the community's other names and locations. See associated video for more detailed instructions.

**Suggested Search Terms:** **"Kaibab Paiute" / "Kaibab Band" / Kaibab Indian NOT Commerce**

**Related Searches:** **"Mohave County" Arizona / "Coconino County" Arizona**

**This community may also have been recorded as:** **Kaibab Paiute / Kaibab Band of Paiute / Kaibab-Paiute / Paiute-Kaibab / Kaibab-Paiute Reservation**

---

**Additional Resources:** The following sources may provide important background information and ideas for additional search terms.

**Kaibab Paiute** website: <http://www.kaibabpaiute-nsn.gov/council.html>

**Wikipedia (general information only):** [https://en.wikipedia.org/wiki/Kaibab\\_Indian\\_Reservation](https://en.wikipedia.org/wiki/Kaibab_Indian_Reservation) and [https://en.wikipedia.org/wiki/Paiute#Southern\\_Paiute](https://en.wikipedia.org/wiki/Paiute#Southern_Paiute)

**Also see:** Inter-Tribal Council of Arizona at [http://itcaonline.com/?page\\_id=1166](http://itcaonline.com/?page_id=1166)

### Links to additional Information (search each by tribe name):

Federal Register (recent rulings and issues): <https://www.federalregister.gov/>

Native Languages: <http://www.native-languages.org>

National Indian Law Library: <http://www.narf.org/nill/tribes/>

American Philosophical Society Indigenous Subject Guide: <https://search.amphilsoc.org/natam/search>

Library of Congress: <https://www.loc.gov/>

---

### Bureau of Indian Affairs (BIA) Records (Record Group 75):

To focus on BIA records in the Online Catalog, use "advanced search" and enter 75 into the Record Group field.

Although important, the BIA is only one of many Federal agencies containing important records of Native Communities. For various reasons there are often periods of time where BIA records are not available for individual tribes. Other techniques should be used for these periods, such as searching by geographic area and/or time-period and widening the search to include ALL Federal agencies.

Community records could also be "buried" in BIA agency files not described in the Online Catalog in great enough detail to be searched directly by community name. Doing an advanced search using one or two words from the BIA office name or the entire office name in quotes, along with Record Group 75, may be beneficial. Some BIA offices known to hold **Kaibab Paiute** records follow:

1927-1971: Phoenix Area Office

# Navajo Nation, Arizona, New Mexico & Utah

## Navajo

To hear modern Native Community names spoken aloud, see [National Indian Law Library](#).

**Always consult the Native People themselves for most accurate information, either through their website or in person.**

**Current Community Headquarters:** **Ramah, New Mexico**

### Citizen Archivist Catalog Tag: **NT251**

To find documents already tagged, copy and paste this tag into the [Advanced Online Catalog Search Form](#) in the "Tags" box. If documents are not tagged or you wish to contribute, see the [Citizen Archivist Program](#).

### Personal archival assistance:

For additional help in finding records of the Navajo Nation, email the archivists at the National Archives at Riverside ([riverside.archives@nara.gov](mailto:riverside.archives@nara.gov)), the National Archives at Denver ([denver.archives@nara.gov](mailto:denver.archives@nara.gov)), or contact the [National Archives in Washington D.C.](#) Organizations listed on the [Arizona Native Communities](#) page may also provide research assistance.

### Searching in the [National Archives Online Catalog](#)

Slashes (/) separate individual search strings. Copy and paste or type exactly, including quotation marks if present. Also, try using a word from each of the community's other names and locations. See associated video for more detailed instructions.

**Suggested Search Terms:** "Navajo Nation" / Diné / Navajo Arizona / Navajo "New Mexico" / Navajo Utah / Navaho Arizona / Navaho "New Mexico" / Navaho Utah / Navajo "Code Talkers" / "Bosque Redondo"

**Related Searches:** "Apache County" Arizona / "Coconino County" Arizona / "Navajo County" Arizona / "Bernalillo County" "New Mexico" / "Cibola County" "New Mexico" / "McKinley County" "New Mexico" / "Rio Arriba County" "New Mexico" / "Sandoval County" "New Mexico" / "San Juan County" "New Mexico" / "Socorro County" "New Mexico" / "San Juan County" Utah

**This community may also have been recorded as:** Navajo / Navaho / Naabeehó Bináhásdzó / Navajo Indian Reservation / Navajo Reservation / Alamo Reservation / Cononcio Reservation

**Additional Resources:** The following sources may provide important background information and ideas for additional search terms.

Navajo Nation website: <http://www.navajo-nsn.gov/>

Wikipedia (general information only): [https://en.wikipedia.org/wiki/Navajo\\_Nation](https://en.wikipedia.org/wiki/Navajo_Nation) and <https://en.wikipedia.org/wiki/Navajo>

Links to additional information (search each by tribe name):

Federal Register (recent rulings and issues): <https://www.federalregister.gov/>

Native Languages: <http://www.native-languages.org>

National Indian Law Library: <http://www.narf.org/nill/tribes/>

American Philosophical Society Indigenous Subject Guide: <https://search.amphilsoc.org/natam/search>

Library of Congress: <https://www.loc.gov/>

### Bureau of Indian Affairs (BIA) Records (Record Group 75):

To focus on BIA records in the Online Catalog, use "advanced search" and enter 75 into the Record Group field.

Although important, the BIA is only one of many Federal agencies containing important records of Native Communities. For various reasons there are often periods of time where BIA records are not available for individual tribes. Other techniques should be used for these periods, such as searching by geographic area and/or time-period and widening the search to include ALL Federal agencies.

Community records could also be "buried" in BIA agency files not described in the Online Catalog in great enough detail to be searched directly by community name. Doing an advanced search using one or two words from the BIA office name or the entire office name in quotes, along with Record Group 75, may be beneficial. Some BIA offices known to hold **Navajo Nation** records follow:

1940-1980 Shiprock Subagency, 1944-1958 Tuba City Subagency, 1949-1955 Northern Navajo Agency, 1952-1961 Eastern Navajo Subagency, 1952-1961 Window Rock Area Office, 1953-1980 Tuba City Subagency, 1961-1970 Navajo Agency, 1961-1977 Holbrook Sub-Office, 1968-1980 Page Sub-Office, 1971-1975 Kayenta Sub-Office, 1972-1975 Leupp Sub-Office

Suggested web-links outside the National Archives website are provided for informational purposes only and do not imply endorsement of any organization or program by the National Archives and Records Administration.

National Archives Native Communities Research Guides. <https://www.archives.gov/education/native-communities>



## Pascua Yaqui Tribe of Arizona

### Yaqui

To hear modern Native Community names spoken aloud, see [National Indian Law Library](#).

**Always consult the Native People themselves for most accurate information, either through their website or in person.**

**Current Community Headquarters:** **Tucson, Arizona**

#### **Citizen Archivist Catalog Tag: NT243**

To find documents already tagged, copy and paste this tag into the [Advanced Online Catalog Search Form](#) in the "Tags" box. If documents are not tagged or you wish to contribute, see the [Citizen Archivist Program](#).

#### **Personal archival assistance:**

For additional help in finding records of the Pascua Yaqui Community, email the archivists at the National Archives at Riverside ([riverside.archives@nara.gov](mailto:riverside.archives@nara.gov)) or contact the [National Archives in Washington D.C.](#) Organizations listed on the [Arizona Native Communities](#) page may also provide research assistance.

#### **Searching in the [National Archives Online Catalog](#)**

**Slashes (/) separate individual search strings.** Copy and paste or type exactly, including quotation marks if present. Also, try using a word from each of the community's other names and locations. See associated video for more detailed instructions.

**Suggested Search Terms:** **Pascua Indian / "Pascua Yaqui" / Yaqui Indian NOT State**

**Related Searches:** **"Pima County" Arizona**

**This community may also have been recorded as:** **Pascua Yaqui / Yoeme / Pascua Yaqui Reservation**

---

**Additional Resources:** The following sources may provide important background information and ideas for additional search terms.

Pascua Yaqui website: <http://www.pascuayaqui-nsn.gov/>

**Wikipedia (general information only):** [https://en.wikipedia.org/wiki/Pascua\\_Yaqui\\_Tribe](https://en.wikipedia.org/wiki/Pascua_Yaqui_Tribe) and <https://en.wikipedia.org/wiki/Yaqui>

**Also see:** Inter-Tribal Council of Arizona at [http://itcaonline.com/?page\\_id=1168](http://itcaonline.com/?page_id=1168)

#### **Links to additional Information (search each by tribe name):**

Federal Register (recent rulings and issues): <https://www.federalregister.gov/>

Native Languages: <http://www.native-languages.org>

National Indian Law Library: <http://www.narf.org/nill/tribes/>

American Philosophical Society Indigenous Subject Guide: <https://search.amphilsoc.org/natam/search>

Library of Congress: <https://www.loc.gov/>

---

#### **Bureau of Indian Affairs (BIA) Records (Record Group 75):**

To focus on BIA records in the Online Catalog, use "advanced search" and enter 75 into the Record Group field.

Although important, the BIA is only one of many Federal agencies containing important records of Native Communities. For various reasons there are often periods of time where BIA records are not available for individual tribes. Other techniques should be used for these periods, such as searching by geographic area and/or time-period and widening the search to include ALL Federal agencies.

Community records could also be "buried" in BIA agency files not described in the Online Catalog in great enough detail to be searched directly by community name. Doing an advanced search using one or two words from the BIA office name or the entire office name in quotes, along with Record Group 75, may be beneficial. Some BIA offices known to hold **Pascua Yaqui** records follow:

1919-1947 Sells Agency

# Quechan Tribe of the Fort Yuma Indian Reservation, California & Arizona

## Quechan (Yuma)

To hear modern Native Community names spoken aloud, see [National Indian Law Library](#).

**Always consult the Native People themselves for most accurate information, either through their website or in person.**

**Current Community Headquarters:** **Yuma, Arizona**

### Citizen Archivist Catalog Tag: **NT239**

To find documents already tagged, copy and paste this tag into the [Advanced Online Catalog Search Form](#) in the "Tags" box. If documents are not tagged or you wish to contribute, see the [Citizen Archivist Program](#).

### Personal archival assistance:

For additional help in finding records of the Quechan Community, email the archivists at the National Archives at Riverside ([riverside.archives@nara.gov](mailto:riverside.archives@nara.gov)), the National Archives at Seattle ([seattle.archives@nara.gov](mailto:seattle.archives@nara.gov)), or contact the [National Archives in Washington D.C.](#) Organizations listed on the [Arizona Native Communities](#) page may also provide research assistance.

### Searching in the [National Archives Online Catalog](#)

**Slashes (/) separate individual search strings.** Copy and paste or type exactly, including quotation marks if present. Also, try using a word from each of the community's other names and locations. See associated video for more detailed instructions.

**Suggested Search Terms:** **Yuma Indian NOT County AND NOT Sentencing AND NOT Space**

**Related Searches:** **"Imperial County" California / "Yuma County" Arizona**

**This community may also have been recorded as:**  
**Quechan / Yuma / Kwtsaan / "those who descended" / Kwatsáan / Fort Yuma Reservation**

**Additional Resources:** The following sources may provide important background information and ideas for additional search terms.

Quechan Tribe website: <https://www.quechantribe.com/>

Wikipedia (general information only): <https://en.wikipedia.org/wiki/Quechan> and [https://en.wikipedia.org/wiki/Fort\\_Yuma\\_Indian\\_Reservation](https://en.wikipedia.org/wiki/Fort_Yuma_Indian_Reservation)

Also see: Inter-Tribal Council of Arizona at [http://itcaonline.com/?page\\_id=1173](http://itcaonline.com/?page_id=1173)

Links to additional information (search each by tribe name):

Federal Register (recent rulings and issues): <https://www.federalregister.gov/>

Native Languages: <http://www.native-languages.org>

National Indian Law Library: <http://www.narf.org/nill/tribes/>

American Philosophical Society Indigenous Subject Guide: <https://search.amphilsoc.org/natam/search>

Library of Congress: <https://www.loc.gov/>

### Bureau of Indian Affairs (BIA) Records (Record Group 75):

To focus on BIA records in the Online Catalog, use "advanced search" and enter 75 into the Record Group field.

Although important, the BIA is only one of many Federal agencies containing important records of Native Communities. For various reasons there are often periods of time where BIA records are not available for individual tribes. Other techniques should be used for these periods, such as searching by geographic area and/or time-period and widening the search to include ALL Federal agencies.

Community records could also be "buried" in BIA agency files not described in the Online Catalog in great enough detail to be searched directly by community name. Doing an advanced search using one or two words from the BIA office name or the entire office name in quotes, along with Record Group 75, may be beneficial. Some BIA offices known to hold **Quechan Tribe** records follow:

1849-1864 New Mexico Superintendency, 1863-1873 Arizona Superintendency, 1906-1974 Fort Yuma Agency, 1908-1941 Portland Area Office, 1929-1973 Phoenix Area Office

# Salt River Pima-Maricopa Indian Community of the Salt River Reservation, Arizona

**Onk Akimel O'odham (Pima) and the Xalychidom Piipaash (Maricopa)**

To hear modern Native Community names spoken aloud, see [National Indian Law Library](#).

**Always consult the Native People themselves for most accurate information, either through their website or in person.**

**Current Community Headquarters:** **Scottsdale, Arizona**

**Citizen Archivist Catalog Tag:** **NT241**

To find documents already tagged, copy and paste this tag into the [Advanced Online Catalog Search Form](#) in the "Tags" box. If documents are not tagged or you wish to contribute, see the [Citizen Archivist Program](#).

**Personal archival assistance:**

For additional help in finding records of the Salt River Pima-Maricopa Community, email the archivists at the National Archives at Riverside ([riverside.archives@nara.gov](mailto:riverside.archives@nara.gov)) or contact the [National Archives in Washington D.C.](#) Organizations listed on the [Arizona Native Communities](#) page may also provide research assistance.

**Searching in the [National Archives Online Catalog](#)**

Slashes (/) separate individual search strings. Copy and paste or type exactly, including quotation marks if present. Also, try using a word from each of the community's other names and locations. See associated video for more detailed instructions.

**Suggested Search Terms:** **"Salt River Indian" / "Salt River" Indian NOT Federal Reserve AND NOT Wildlife AND NOT Employment / "Pima-Maricopa"**

**Related Searches:** **"Maricopa County" Arizona**

**This community may also have been recorded as:** **Salt River Tribes / Pima-Maricopa / O'odham and Piipaash / Salt River Pima-Maricopa Indian Community / Salt River Reservation**

---

**Additional Resources:** The following sources may provide important background information and ideas for additional search terms.

**Salt River Pima-Maricopa** website: <http://www.srpmic-nsn.gov/>

**Wikipedia (general information only):** [https://en.wikipedia.org/wiki/Salt\\_River\\_Pima%E2%80%93Maricopa\\_Indian\\_Community](https://en.wikipedia.org/wiki/Salt_River_Pima%E2%80%93Maricopa_Indian_Community) and [https://en.wikipedia.org/wiki/Pima\\_people](https://en.wikipedia.org/wiki/Pima_people) and [https://en.wikipedia.org/wiki/Maricopa\\_people](https://en.wikipedia.org/wiki/Maricopa_people)

**Also see:** Inter-Tribal Council of Arizona at [http://itcaonline.com/?page\\_id=1175](http://itcaonline.com/?page_id=1175)

**Links to additional Information (search each by tribe name):**

Federal Register (recent rulings and issues): <https://www.federalregister.gov/>

Native Languages: <http://www.native-languages.org>

National Indian Law Library: <http://www.narf.org/nill/tribes/>

American Philosophical Society Indigenous Subject Guide: <https://search.amphilsoc.org/natam/search>

Library of Congress: <https://www.loc.gov/>

---

**Bureau of Indian Affairs (BIA) Records (Record Group 75):**

To focus on BIA records in the Online Catalog, use "advanced search" and enter 75 into the Record Group field.

Although important, the BIA is only one of many Federal agencies containing important records of Native Communities. For various reasons there are often periods of time where BIA records are not available for individual tribes. Other techniques should be used for these periods, such as searching by geographic area and/or time-period and widening the search to include ALL Federal agencies.

Community records could also be "buried" in BIA agency files not described in the Online Catalog in great enough detail to be searched directly by community name. Doing an advanced search using one or two words from the BIA office name or the entire office name in quotes, along with Record Group 75, may be beneficial. Some BIA offices known to hold **Salt River Pima-Maricopa** records follow:

1849-1864 New Mexico Superintendency, 1863-1873 Arizona Superintendency, 1930-1991 Salt River Agency, 1927-1971 Phoenix Area Office

# San Carlos Apache Tribe of the San Carlos Reservation, Arizona

## Western Apache and Yavapai

To hear modern Native Community names spoken aloud, see [National Indian Law Library](#).

**Always consult the Native People themselves for most accurate information, either through their website or in person.**

**Current Community Headquarters:** **San Carlos, Arizona**

### Citizen Archivist Catalog Tag: **NT237**

To find documents already tagged, copy and paste this tag into the [Advanced Online Catalog Search Form](#) in the "Tags" box. If documents are not tagged or you wish to contribute, see the [Citizen Archivist Program](#).

### Personal archival assistance:

For additional help in finding records of the San Carlos Apache Community, email the archivists at the National Archives at Riverside ([riverside.archives@nara.gov](mailto:riverside.archives@nara.gov)) or contact the [National Archives in Washington D.C.](#) Organizations listed on the [Arizona Native Communities](#) page may also provide research assistance.

### Searching in the [National Archives Online Catalog](#)

Slashes (/) separate individual search strings. Copy and paste or type exactly, including quotation marks if present. Also, try using a word from each of the community's other names and locations. See associated video for more detailed instructions.

**Suggested Search Terms:** **"San Carlos Apache" / "Chiricahua Apache"**

**Related Searches:** **"Gila County" Arizona / "Graham County" Arizona / "Pinal County" Arizona**

**This community may also have been recorded as:** **San Carlos Apache / San Carlos Apache-Nde / One People Nde Nation / Apache Nation / Apache Nation Chamber of Commerce / San Carlos Reservation**

---

**Additional Resources:** The following sources may provide important background information and ideas for additional search terms.

**San Carlos Apache** website: <http://www.sancarlosapache.com/home.htm>

**Wikipedia (general information only):** [https://en.wikipedia.org/wiki/San\\_Carlos\\_Apache\\_Indian\\_Reservation](https://en.wikipedia.org/wiki/San_Carlos_Apache_Indian_Reservation) and [https://en.wikipedia.org/wiki/Western\\_Apache\\_people](https://en.wikipedia.org/wiki/Western_Apache_people) and <https://en.wikipedia.org/wiki/Chiricahua>

**Also see:** Inter-Tribal Council of Arizona at [http://itcaonline.com/?page\\_id=1177](http://itcaonline.com/?page_id=1177)

### Links to additional Information (search each by tribe name):

Federal Register (recent rulings and issues): <https://www.federalregister.gov/>

Native Languages: <http://www.native-languages.org>

National Indian Law Library: <http://www.narf.org/nill/tribes/>

American Philosophical Society Indigenous Subject Guide: <https://search.amphilsoc.org/natam/search>

Library of Congress: <https://www.loc.gov/>

---

### Bureau of Indian Affairs (BIA) Records (Record Group 75):

To focus on BIA records in the Online Catalog, use "advanced search" and enter 75 into the Record Group field.

Although important, the BIA is only one of many Federal agencies containing important records of Native Communities. For various reasons there are often periods of time where BIA records are not available for individual tribes. Other techniques should be used for these periods, such as searching by geographic area and/or time-period and widening the search to include ALL Federal agencies.

Community records could also be "buried" in BIA agency files not described in the Online Catalog in great enough detail to be searched directly by community name. Doing an advanced search using one or two words from the BIA office name or the entire office name in quotes, along with Record Group 75, may be beneficial. Some BIA offices known to hold **San Carlos Apache** records follow:

1849-1864 New Mexico Superintendency, 1863-1873 Arizona Superintendency, 1888-1995 San Carlos Agency, 1927-1974 Phoenix Area Office

# San Juan Southern Paiute Tribe of Arizona

## Southern Paiute

To hear modern Native Community names spoken aloud, see [National Indian Law Library](#).

**Always consult the Native People themselves for most accurate information, either through their website or in person.**

**Current Community Headquarters:** **Tuba City, Arizona**

### Citizen Archivist Catalog Tag: **NT235**

To find documents already tagged, copy and paste this tag into the [Advanced Online Catalog Search Form](#) in the "Tags" box. If documents are not tagged or you wish to contribute, see the [Citizen Archivist Program](#).

### Personal archival assistance:

For additional help in finding records of the San Juan Southern Paiute Community, email the archivists at the National Archives at Riverside ([riverside.archives@nara.gov](mailto:riverside.archives@nara.gov)) or contact the [National Archives in Washington D.C.](#) Organizations listed on the [Arizona Native Communities](#) page may also provide research assistance.

### Searching in the [National Archives Online Catalog](#)

Slashes (/) separate individual search strings. Copy and paste or type exactly, including quotation marks if present. Also, try using a word from each of the community's other names and locations. See associated video for more detailed instructions.

**Suggested Search Terms:** **"Southern Paiute" Arizona**

**Related Searches:** **"Coconino County" Arizona**

**This community may also have been recorded as:** **San Juan Southern Paiute / San Juan Southern Paiute Council**

---

**Additional Resources:** The following sources may provide important background information and ideas for additional search terms.

San Juan Southern Paiute website: None found

Wikipedia (general information only): [https://en.wikipedia.org/wiki/San\\_Juan\\_Southern\\_Paiute\\_Tribe\\_of\\_Arizona](https://en.wikipedia.org/wiki/San_Juan_Southern_Paiute_Tribe_of_Arizona) and [https://en.wikipedia.org/wiki/Paiute#Southern\\_Paiute](https://en.wikipedia.org/wiki/Paiute#Southern_Paiute)

Also see: Inter-Tribal Council of Arizona at [http://itcaonline.com/?page\\_id=13724](http://itcaonline.com/?page_id=13724)

Links to additional information (search each by tribe name):

Federal Register (recent rulings and issues): <https://www.federalregister.gov/>

Native Languages: <http://www.native-languages.org>

National Indian Law Library: <http://www.narf.org/nill/tribes/>

American Philosophical Society Indigenous Subject Guide: <https://search.amphilsoc.org/natam/search>

Library of Congress: <https://www.loc.gov/>

---

### Bureau of Indian Affairs (BIA) Records (Record Group 75):

To focus on BIA records in the Online Catalog, use "advanced search" and enter 75 into the Record Group field.

Although important, the BIA is only one of many Federal agencies containing important records of Native Communities. For various reasons there are often periods of time where BIA records are not available for individual tribes. Other techniques should be used for these periods, such as searching by geographic area and/or time-period and widening the search to include ALL Federal agencies.

Community records could also be "buried" in BIA agency files not described in the Online Catalog in great enough detail to be searched directly by community name. Doing an advanced search using one or two words from the BIA office name or the entire office name in quotes, along with Record Group 75, may be beneficial. Some BIA offices known to hold **San Juan Southern Paiute** records follow:

1949-1999 Phoenix Area Office

# Tohono O'odham Nation of Arizona

## Tohono O'odham (Papago)

To hear modern Native Community names spoken aloud, see [National Indian Law Library](#).

**Always consult the Native People themselves for most accurate information, either through their website or in person.**

**Current Community Headquarters:** [Sells, Arizona](#)

### Citizen Archivist Catalog Tag: **NT236**

To find documents already tagged, copy and paste this tag into the [Advanced Online Catalog Search Form](#) in the "Tags" box. If documents are not tagged or you wish to contribute, see the [Citizen Archivist Program](#).

### Personal archival assistance:

For additional help in finding records of the Tohono O'odham Community, email the archivists at the National Archives at Riverside ([riverside.archives@nara.gov](mailto:riverside.archives@nara.gov)) or contact the [National Archives in Washington D.C.](#) Organizations listed on the [Arizona Native Communities](#) page may also provide research assistance.

### Searching in the [National Archives Online Catalog](#)

**Slashes (/) separate individual search strings.** Copy and paste or type exactly, including quotation marks if present. Also, try using a word from each of the community's other names and locations. See associated video for more detailed instructions.

**Suggested Search Terms:** ["Tohono O'odham" / Papago](#)

**Related Searches:** ["Pima County" Arizona](#)

**This community may also have been recorded as:** [Tohono O'odham / Papago / Tohono O'odham Nation Reservation / Tohono O'Odham Reservation / Papago Reservation](#)

---

**Additional Resources:** The following sources may provide important background information and ideas for additional search terms.

Tohono O'odham website: <http://www.tonation-nsn.gov/>

Wikipedia (general information only): [https://en.wikipedia.org/wiki/Tohono\\_O%27odham\\_Nation](https://en.wikipedia.org/wiki/Tohono_O%27odham_Nation) and [https://en.wikipedia.org/wiki/Tohono\\_O%27odham](https://en.wikipedia.org/wiki/Tohono_O%27odham)

Also see: Inter-Tribal Council of Arizona at [http://itcaonline.com/?page\\_id=1181](http://itcaonline.com/?page_id=1181)

Links to additional information (search each by tribe name):

Federal Register (recent rulings and issues): <https://www.federalregister.gov/>

Native Languages: <http://www.native-languages.org>

National Indian Law Library: <http://www.narf.org/nill/tribes/>

American Philosophical Society Indigenous Subject Guide: <https://search.amphilsoc.org/natam/search>

Library of Congress: <https://www.loc.gov/>

---

### Bureau of Indian Affairs (BIA) Records (Record Group 75):

To focus on BIA records in the Online Catalog, use "advanced search" and enter 75 into the Record Group field.

Although important, the BIA is only one of many Federal agencies containing important records of Native Communities. For various reasons there are often periods of time where BIA records are not available for individual tribes. Other techniques should be used for these periods, such as searching by geographic area and/or time-period and widening the search to include ALL Federal agencies.

Community records could also be "buried" in BIA agency files not described in the Online Catalog in great enough detail to be searched directly by community name. Doing an advanced search using one or two words from the BIA office name or the entire office name in quotes, along with Record Group 75, may be beneficial. Some BIA offices known to hold **Tohono O'odham** records follow:

1849-1864 New Mexico Superintendency, 1863-1873 Arizona Superintendency, 1871-1980 Papago Agency, 1916-1969 Phoenix Area Office

# Tonto Apache Tribe of Arizona

## Western Apache

To hear modern Native Community names spoken aloud, see [National Indian Law Library](#).

**Always consult the Native People themselves for most accurate information, either through their website or in person.**

**Current Community Headquarters:** **Payson, Arizona**

### Citizen Archivist Catalog Tag: **NT240**

To find documents already tagged, copy and paste this tag into the [Advanced Online Catalog Search Form](#) in the "Tags" box. If documents are not tagged or you wish to contribute, see the [Citizen Archivist Program](#).

### Personal archival assistance:

For additional help in finding records of the Tonto Apache Community, email the archivists at the National Archives at Riverside ([riverside.archives@nara.gov](mailto:riverside.archives@nara.gov)) or contact the [National Archives in Washington D.C.](#) Organizations listed on the [Arizona Native Communities](#) page may also provide research assistance.

### Searching in the [National Archives Online Catalog](#)

**Slashes (/) separate individual search strings.** Copy and paste or type exactly, including quotation marks if present. Also, try using a word from each of the community's other names and locations. See associated video for more detailed instructions.

**Suggested Search Terms:** **"Tonto Apache Tribe" / "Tonto Apache" NOT McDowell**

**Related Searches:** **"Gila County" Arizona**

**This community may also have been recorded as:** **Tonto Apache / Tonto Apache Reservation**

---

**Additional Resources:** The following sources may provide important background information and ideas for additional search terms.

**Tonto Apache website:** None found

**Wikipedia (general information only):** [https://en.wikipedia.org/wiki/Tonto\\_Apache](https://en.wikipedia.org/wiki/Tonto_Apache) and [https://en.wikipedia.org/wiki/Western\\_Apache\\_people](https://en.wikipedia.org/wiki/Western_Apache_people)

**Also see:** Inter-Tribal Council of Arizona at [http://itcaonline.com/?page\\_id=1183](http://itcaonline.com/?page_id=1183)

### Links to additional Information (search each by tribe name):

Federal Register (recent rulings and issues): <https://www.federalregister.gov/>

Native Languages: <http://www.native-languages.org>

National Indian Law Library: <http://www.narf.org/nill/tribes/>

American Philosophical Society Indigenous Subject Guide: <https://search.amphilsoc.org/natam/search>

Library of Congress: <https://www.loc.gov/>

---

### Bureau of Indian Affairs (BIA) Records (Record Group 75):

To focus on BIA records in the Online Catalog, use "advanced search" and enter 75 into the Record Group field.

Although important, the BIA is only one of many Federal agencies containing important records of Native Communities. For various reasons there are often periods of time where BIA records are not available for individual tribes. Other techniques should be used for these periods, such as searching by geographic area and/or time-period and widening the search to include ALL Federal agencies.

Community records could also be "buried" in BIA agency files not described in the Online Catalog in great enough detail to be searched directly by community name. Doing an advanced search using one or two words from the BIA office name or the entire office name in quotes, along with Record Group 75, may be beneficial. Some BIA offices known to hold **Tonto Apache** records follow:

1947- Office of Indian Affairs, 1849-1947 Office of the Commissioner, . 1949-1999 Phoenix Area Office

# White Mountain Apache Tribe of the Fort Apache Reservation, Arizona

## Western Apache

To hear modern Native Community names spoken aloud, see [National Indian Law Library](#).

**Always consult the Native People themselves for most accurate information, either through their website or in person.**

**Current Community Headquarters:** [Whiteriver, Arizona](#)

### Citizen Archivist Catalog Tag: **NT245**

To find documents already tagged, copy and paste this tag into the [Advanced Online Catalog Search Form](#) in the "Tags" box. If documents are not tagged or you wish to contribute, see the [Citizen Archivist Program](#).

### Personal archival assistance:

For additional help in finding records of the White Mountain Apache Community, email the archivists at the National Archives at Riverside ([riverside.archives@nara.gov](mailto:riverside.archives@nara.gov)), the National Archives at Denver ([denver.archives@nara.gov](mailto:denver.archives@nara.gov)), or contact the [National Archives in Washington D.C.](#) Organizations listed on the [Arizona Native Communities](#) page may also provide research assistance.

### Searching in the [National Archives Online Catalog](#)

Slashes (/) separate individual search strings. Copy and paste or type exactly, including quotation marks if present. Also, try using a word from each of the community's other names and locations. See associated video for more detailed instructions.

**Suggested Search Terms:** **"White Mountain" Apache / "Fort Apache" NOT Personnel AND NOT "Federal Reserve"**

**Related Searches:** **"Navajo County" Arizona / "Apache County" Arizona / "Gila County" Arizona**

**This community may also have been recorded as:** **White Mountain Apache / Fort Apache Reservation**

---

**Additional Resources:** The following sources may provide important background information and ideas for additional search terms.

White Mountain Apache website: <http://www.wmat.us/>

Wikipedia (general information only): [https://en.wikipedia.org/wiki/Fort\\_Apache\\_Indian\\_Reservation](https://en.wikipedia.org/wiki/Fort_Apache_Indian_Reservation) and [https://en.wikipedia.org/wiki/Western\\_Apache\\_people](https://en.wikipedia.org/wiki/Western_Apache_people)

Also see: Inter-Tribal Council of Arizona at [http://itcaonline.com/?page\\_id=1185](http://itcaonline.com/?page_id=1185)

Links to additional information (search each by tribe name):

Federal Register (recent rulings and issues): <https://www.federalregister.gov/>

Native Languages: <http://www.native-languages.org>

National Indian Law Library: <http://www.narf.org/nill/tribes/>

American Philosophical Society Indigenous Subject Guide: <https://search.amphilsoc.org/natam/search>

Library of Congress: <https://www.loc.gov/>

---

### Bureau of Indian Affairs (BIA) Records (Record Group 75):

To focus on BIA records in the Online Catalog, use "advanced search" and enter 75 into the Record Group field.

Although important, the BIA is only one of many Federal agencies containing important records of Native Communities. For various reasons there are often periods of time where BIA records are not available for individual tribes. Other techniques should be used for these periods, such as searching by geographic area and/or time-period and widening the search to include ALL Federal agencies.

Community records could also be "buried" in BIA agency files not described in the Online Catalog in great enough detail to be searched directly by community name. Doing an advanced search using one or two words from the BIA office name or the entire office name in quotes, along with Record Group 75, may be beneficial. Some BIA offices known to hold **White Mountain Apache** records follow:

1849-1864 New Mexico Superintendency, 1863-1873 Arizona Superintendency, 1869-1970 Fort Apache Agency, 1927-1974 Phoenix Area Office



# Yavapai-Apache Nation of the Camp Verde Indian Reservation, Arizona

## Yavapai and Western Apache

To hear modern Native Community names spoken aloud, see [National Indian Law Library](#).

**Always consult the Native People themselves for most accurate information, either through their website or in person.**

**Current Community Headquarters:** **Camp Verde, Arizona**

### Citizen Archivist Catalog Tag: **NT233**

To find documents already tagged, copy and paste this tag into the [Advanced Online Catalog Search Form](#) in the "Tags" box. If documents are not tagged or you wish to contribute, see the [Citizen Archivist Program](#).

### Personal archival assistance:

For additional help in finding records of the Camp Verde Yavapai-Apache Community, email the archivists at the National Archives at Riverside ([riverside.archives@nara.gov](mailto:riverside.archives@nara.gov)) or contact the [National Archives in Washington D.C.](#) Organizations listed on the [Arizona Native Communities](#) page may also provide research assistance.

### Searching in the [National Archives Online Catalog](#)

Slashes (/) separate individual search strings. Copy and paste or type exactly, including quotation marks if present. Also, try using a word from each of the community's other names and locations. See associated video for more detailed instructions.

**Suggested Search Terms:** **Yavapai-Apache Not Commerce AND NOT "Labor Relations" AND NOT Treasury / "Camp Verde" Arizona NOT Commerce**

**Related Searches:** **"Yavapai County" Arizona**

**This community may also have been recorded as:** **Western Apache / Yavapai-Apache / Rio Verde Reservation / Camp Verde Yavapai-Apache Reservation**

---

**Additional Resources:** The following sources may provide important background information and ideas for additional search terms.

Camp Verde Yavapai-Apache website: <http://www.yavapai-apache.org/>

Wikipedia (general information only): [https://en.wikipedia.org/wiki/Yavapai-Apache\\_Nation](https://en.wikipedia.org/wiki/Yavapai-Apache_Nation) and <https://en.wikipedia.org/wiki/Yavapai> and [https://en.wikipedia.org/wiki/Western\\_Apache\\_people](https://en.wikipedia.org/wiki/Western_Apache_people)

Also see: Inter-Tribal Council of Arizona at [http://itcaonline.com/?page\\_id=1187](http://itcaonline.com/?page_id=1187)

### Links to additional information (search each by tribe name):

Federal Register (recent rulings and issues): <https://www.federalregister.gov/>

Native Languages: <http://www.native-languages.org>

National Indian Law Library: <http://www.narf.org/nill/tribes/>

American Philosophical Society Indigenous Subject Guide: <https://search.amphilsoc.org/natam/search>

Library of Congress: <https://www.loc.gov/>

---

### Bureau of Indian Affairs (BIA) Records (Record Group 75):

To focus on BIA records in the Online Catalog, use "advanced search" and enter 75 into the Record Group field.

Although important, the BIA is only one of many Federal agencies containing important records of Native Communities. For various reasons there are often periods of time where BIA records are not available for individual tribes. Other techniques should be used for these periods, such as searching by geographic area and/or time-period and widening the search to include ALL Federal agencies.

Community records could also be "buried" in BIA agency files not described in the Online Catalog in great enough detail to be searched directly by community name. Doing an advanced search using one or two words from the BIA office name or the entire office name in quotes, along with Record Group 75, may be beneficial. Some BIA offices known to hold **Camp Verde Yavapai-Apache** records follow:

1849-1864 New Mexico Superintendency, 1863-1873 Arizona Superintendency, 1880-1993 Truxton Canyon Agency, 1932-1955 Phoenix Area Office

## Yavapai-Prescott Indian Tribe

### Yavapai

To hear modern Native Community names spoken aloud, see [National Indian Law Library](#).

**Always consult the Native People themselves for most accurate information, either through their website or in person.**

**Current Community Headquarters:** **Prescott, Arizona**

#### Citizen Archivist Catalog Tag: **NT231**

To find documents already tagged, copy and paste this tag into the [Advanced Online Catalog Search Form](#) in the "Tags" box. If documents are not tagged or you wish to contribute, see the [Citizen Archivist Program](#).

#### Personal archival assistance:

For additional help in finding records of the Yavapai-Prescott Community, email the archivists at the National Archives at Riverside ([riverside.archives@nara.gov](mailto:riverside.archives@nara.gov)) or contact the [National Archives in Washington D.C.](#) Organizations listed on the [Arizona Native Communities](#) page may also provide research assistance.

#### Searching in the [National Archives Online Catalog](#)

Slashes (/) separate individual search strings. Copy and paste or type exactly, including quotation marks if present. Also, try using a word from each of the community's other names and locations. See associated video for more detailed instructions.

**Suggested Search Terms:** **"Yavapai Prescott" / Yavapai Reservation / Yavapai-Prescott**

**Related Searches:** **"Yavapai County" Arizona**

**This community may also have been recorded as:**  
**Yavapai-Prescott Tribe of the Yavapai Reservation, Arizona / Yavapai-Prescott / Yavapai-Prescott Reservation**

---

**Additional Resources:** The following sources may provide important background information and ideas for additional search terms.

Yavapai-Prescott website: <http://www.ypit.com/>

**Wikipedia (general information only):** [https://en.wikipedia.org/wiki/Yavapai-Prescott\\_Tribe](https://en.wikipedia.org/wiki/Yavapai-Prescott_Tribe) and <https://en.wikipedia.org/wiki/Yavapai>

**Also see:** Inter-Tribal Council of Arizona at [http://itcaonline.com/?page\\_id=1189](http://itcaonline.com/?page_id=1189)

#### Links to additional Information (search each by tribe name):

Federal Register (recent rulings and issues): <https://www.federalregister.gov/>

Native Languages: <http://www.native-languages.org>

National Indian Law Library: <http://www.narf.org/nill/tribes/>

American Philosophical Society Indigenous Subject Guide: <https://search.amphilsoc.org/natam/search>

Library of Congress: <https://www.loc.gov/>

---

#### Bureau of Indian Affairs (BIA) Records (Record Group 75):

To focus on BIA records in the Online Catalog, use "advanced search" and enter 75 into the Record Group field.

Although important, the BIA is only one of many Federal agencies containing important records of Native Communities. For various reasons there are often periods of time where BIA records are not available for individual tribes. Other techniques should be used for these periods, such as searching by geographic area and/or time-period and widening the search to include ALL Federal agencies.

Community records could also be "buried" in BIA agency files not described in the Online Catalog in great enough detail to be searched directly by community name. Doing an advanced search using one or two words from the BIA office name or the entire office name in quotes, along with Record Group 75, may be beneficial. Some BIA offices known to hold **Yavapai-Prescott** records follow:

1849-1864 New Mexico Superintendency, 1863-1873 Arizona Superintendency, 1880-1993 Truxton Canyon Agency, 1932-1955 Phoenix Area Office

# New Mexico Native Communities

To perform a simple search of the **GENERAL** records of New Mexico's Native People in the National Archives Online Catalog is somewhat difficult for reasons not entirely clear at this time. Try using the following search terms: "**New Mexico Indian**" (including quotation marks), or "**New Mexico**" **NOT Alaska AND NOT "Five Civilized"** (include quotation marks and use advanced search, using Record Group 75).

There are several great resources available for general information and material for kids about the Native People of New Mexico, such as the [Native Languages](#) and [National Museum of the American Indian](#) websites. Type **New Mexico** into the main search box for both.

Related state agencies and universities may also hold records or information about these communities. Examples might include the [New Mexico State Record Center and Archives](#), the [Historical Society of New Mexico](#), and the [Indian Pueblo Cultural Center Museum Education Resources](#).

---

## Historic New Mexico Native Communities

---

### Federally Recognized Native Communities in New Mexico (2018)

[Jicarilla Apache Nation, New Mexico](#)

[Kewa Pueblo, New Mexico](#)

[Mescalero Apache Tribe of the Mescalero Reservation, New Mexico](#)

[Navajo Nation, Arizona, New Mexico & Utah](#)

[Ohkay Owingeh, New Mexico](#)

[Pueblo of Acoma, New Mexico](#)

[Pueblo of Cochiti, New Mexico](#)

[Pueblo of Isleta, New Mexico](#)

[Pueblo of Jemez, New Mexico](#)

[Pueblo of Laguna, New Mexico](#)

[Pueblo of Nambe, New Mexico](#)

[Pueblo of Picuris, New Mexico](#)

[Pueblo of Pojoaque, New Mexico](#)

[Pueblo of Sandia, New Mexico](#)

[Pueblo of San Felipe, New Mexico](#)

[Pueblo of San Ildefonso, New Mexico](#)

[Pueblo of Santa Ana, New Mexico](#)

[Pueblo of Santa Clara, New Mexico](#)

[Pueblo of Taos, New Mexico](#)  
[Pueblo of Tesuque, New Mexico](#)

[Pueblo of Zia, New Mexico](#)

[Ute Mountain Ute Tribe \(Colorado and New Mexico\)](#)

[Zuni Tribe of the Zuni Reservation, New Mexico](#)

### Sample Documents



Pueblo Couple in their home, ca. 1935. National Archives.  
<https://catalog.archives.gov/id/594786>



Mission Building at United Pueblos Agency, ca. 1939. National Archives.  
<https://catalog.archives.gov/id/293333>

# Historic New Mexico Native Communities

For a map of historic language areas in New Mexico, see [Native Languages](#).

**Instructions:** Slashes separate search terms and phrases. **Copy and paste exact phrase** into the [Online Catalog](#), including quotation marks, if present. Always be willing to experiment with search terms. Quoted phrases return very different results than non-quoted phrases. Using the geographic location or most relevant word(s) from the tribal name with one of the following words may also prove beneficial: **Indian** (most useful), **Native**, **Tribe**, **Reservation**, or **Village**. Be sure to link to modern tribal pages. They contain current information and more possible search terms.

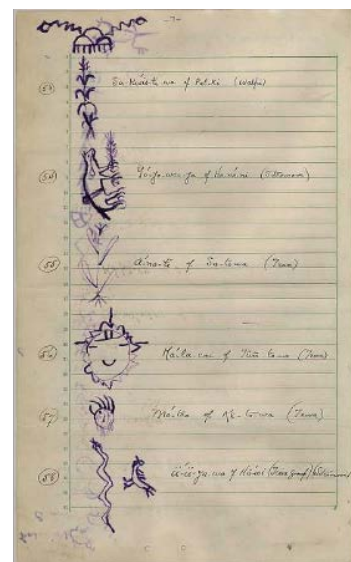
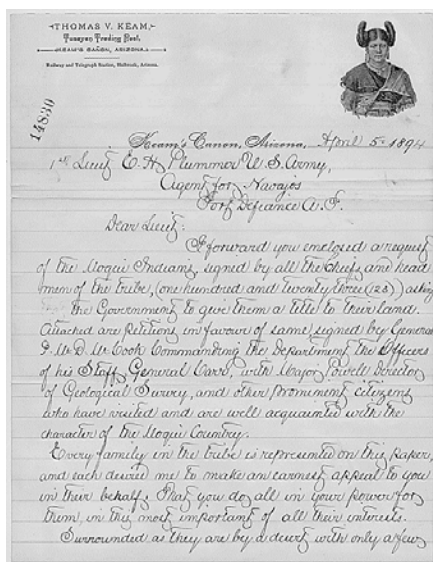
Historic Tribes	Suggested Online Catalog Search Terms	Associated Federally Recognized Tribal Communities 2018
Chiricahua Apache	Chiricahua NOT frog / Apache Indian / "Fort Sill" Apache / Mescalero Reservation	New Mexico: <a href="#">Mescalero Apache Tribe of the Mescalero Reservation, New Mexico</a> Oklahoma: Fort Sill Apache Tribe of Oklahoma ( <a href="#">See Home Page for Central Plains</a> )
Comanche	"Comanche Nation" / Comanche Indian NOT Defense AND NOT County	Oklahoma: Comanche Nation, Oklahoma ( <a href="#">See Home Page for Central Plains</a> )
Jano	No Federal Government records are available.	<b>Some Apache claim Jano and Suma ancestry</b>
Jicarilla Apache	Jicarilla Apache / Jicarilla Indian NOT Housing	New Mexico: <a href="#">Jicarilla Apache Nation, New Mexico</a>
Mescalero Apache	Mescalero Apache	New Mexico: <a href="#">Mescalero Apache Tribe of the Mescalero Reservation, New Mexico</a>
Mimbreno Apache	Mimbreno Apache NOT "Puerto Rican"	Oklahoma: Fort Sill Apache Tribe of Oklahoma ( <a href="#">See Home Page for Central Plains</a> )
Navajo	"Navajo Indian" / "Navaho Indian" / "Navajo Nation" / "Navaho Nation" / "Colorado River Indian Tribes"	Arizona and California: <a href="#">Colorado River Indian Tribes of the Colorado River Indian Reservation, Arizona and California</a> Arizona, New Mexico, and Utah <a href="#">Navajo Nation, Arizona, New Mexico &amp; Utah</a>

Continued on next page



House on the Moqui Pueblo Reservation, ca. 1890. National Archives. <https://catalog.archives.gov/id/292867>

Historic Tribes	Suggested Online Catalog Search Terms	Associated Federally Recognized Tribal Communities 2018
Pueblo	"Pueblo Indian" / Hopi Indian / Acoma Pueblo / Cochiti Pueblo / Jemez Pueblo / Isleta Pueblo / etc.	<p>Arizona:</p> <p><a href="#">Hopi Tribe of Arizona</a></p> <p>New Mexico:</p> <p><a href="#">Kewa Pueblo, New Mexico</a></p> <p><a href="#">Ohkay Owingeh, New Mexico</a></p> <p><a href="#">Pueblo of Acoma, New Mexico</a></p> <p><a href="#">Pueblo of Cochiti, New Mexico</a></p> <p><a href="#">Pueblo of Isleta, New Mexico</a></p> <p><a href="#">Pueblo of Jemez, New Mexico</a></p> <p><a href="#">Pueblo of Laguna, New Mexico</a></p> <p><a href="#">Pueblo of Nambe, New Mexico</a></p> <p><a href="#">Pueblo of Picuris, New Mexico</a></p> <p><a href="#">Pueblo of Pojoaque, New Mexico</a></p> <p><a href="#">Pueblo of San Felipe, New Mexico</a></p> <p><a href="#">Pueblo of San Ildefonso, New Mexico</a></p> <p><a href="#">Pueblo of Sandia, New Mexico</a></p> <p><a href="#">Pueblo of Santa Ana, New Mexico</a></p> <p><a href="#">Pueblo of Santa Clara, New Mexico</a></p> <p><a href="#">Pueblo of Taos, New Mexico</a></p> <p><a href="#">Pueblo of Tesuque, New Mexico</a></p> <p><a href="#">Pueblo of Zia, New Mexico</a></p> <p><a href="#">Zuni Tribe of the Zuni Reservation, New Mexico</a></p> <p>Texas:</p> <p><a href="#">Ysleta del Sur Pueblo</a></p>
Ute	"Ute Indian" / "Southern Ute" / "Ute Mountain"	<p>Utah:</p> <p><a href="#">Ute Indian Tribe of the Uintah &amp; Ouray Reservation, Utah</a> (See Home Page for Northern Plateau)</p> <p><a href="#">Ute Mountain Ute Tribe</a> (See Home Page for Northern Plateau)</p> <p>Colorado:</p> <p><a href="#">Southern Ute Indian Tribe of the Southern Ute Reservation, Colorado</a> (See Home Page for Northern Plateau)</p>
Zuni	Zuni Indian/ "Zuni Pueblo"	<p>New Mexico:</p> <ul style="list-style-type: none"> <li><a href="#">Zuni Tribe of the Zuni Reservation, New Mexico</a></li> </ul>



Opening page and one example (of many) signature pages of a Hopi (Moqui) petition signed by all the Chiefs and headmen of the tribe asking the Federal Government to give them title to their lands instead of individually allotting each tribal member, 1894. National Archives. <https://catalog.archives.gov/id/300340>

## Jicarilla Apache Nation, New Mexico

### Eastern Apache

To hear modern Native Community names spoken aloud, see [National Indian Law Library](#).

**Always consult the Native People themselves for most accurate information, either through their website or in person.**

**Current Community Headquarters:** **Dulce, New Mexico**

#### Citizen Archivist Catalog Tag: **NT422**

To find documents already tagged, copy and paste this tag into the [Advanced Online Catalog Search Form](#) in the "Tags" box. If documents are not tagged or you wish to contribute, see the [Citizen Archivist Program](#).

#### Personal archival assistance:

For additional help in finding records of the Jicarilla Apache Community, email the archivists at the National Archives at Denver ([denver.archives@nara.gov](mailto:denver.archives@nara.gov)) or contact the [National Archives in Washington D.C.](#) Organizations listed on the [New Mexico Native Communities](#) page may also provide research assistance.

#### Searching in the [National Archives Online Catalog](#)

Slashes (/) separate individual search strings. Copy and paste or type exactly, including quotation marks if present. Also, try using a word from each of the community's other names and locations. See associated video for more detailed instructions.

**Suggested Search Terms:** **"Jicarilla Apache" / Jicarilla Apache**

**Related Searches:** **"Rio Arriba County" "New Mexico" / "Sandoval County" New Mexico**

**This community may also have been recorded as:** **Jicarilla Apache / Eastern Apache / Haisndayin / "people who came from below" / Jicarilla Apache Reservation**

---

**Additional Resources:** The following sources may provide important background information and ideas for additional search terms.

**Jicarilla Apache website:** No main website found. Search online for various Jicarilla Apache enterprises.

**Wikipedia (general information only):** [https://en.wikipedia.org/wiki/Jicarilla\\_Apache](https://en.wikipedia.org/wiki/Jicarilla_Apache) and [https://en.wikipedia.org/wiki/Athabaskan\\_languages](https://en.wikipedia.org/wiki/Athabaskan_languages)

**Links to additional information (search each by tribe name):**

Federal Register (recent rulings and issues): <https://www.federalregister.gov/>

Native Languages: <http://www.native-languages.org>

National Indian Law Library: <http://www.narf.org/nill/tribes/>

American Philosophical Society Indigenous Subject Guide: <https://search.amphilsoc.org/natam/search>

Library of Congress: <https://www.loc.gov/>

---

#### **Bureau of Indian Affairs (BIA) Records (Record Group 75):**

To focus on BIA records in the Online Catalog, use "advanced search" and enter 75 into the Record Group field.

Although important, the BIA is only one of many Federal agencies containing important records of Native Communities. For various reasons there are often periods of time where BIA records are not available for individual tribes. Other techniques should be used for these periods, such as searching by geographic area and/or time-period and widening the search to include ALL Federal agencies.

Community records could also be "buried" in BIA agency files not described in the Online Catalog in great enough detail to be searched directly by community name. Doing an advanced search using one or two words from the BIA office name or the entire office name in quotes, along with Record Group 75, may be beneficial. Some BIA offices known to hold **Jicarilla Apache** records follow:

1850-1874 New Mexico Superintendency, 1874-1901 Pueblo and Jicarilla Agency, 1874-1946 Mescalero Agency, 1875-1876 Cimarron Agency, 1875-1878 Abiquiu Agency, 1877-1989 Albuquerque Area Office, 1901-1966 Jicarilla Agency

## Kewa Pueblo, New Mexico

### Pueblo (Eastern Keres-speaking)

To hear modern Native Community names spoken aloud, see [National Indian Law Library](#).

**Always consult the Native People themselves for most accurate information, either through their website or in person.**

**Current Community Headquarters:** **Santo Domingo Pueblo, New Mexico**

#### Citizen Archivist Catalog Tag: **NT428**

To find documents already tagged, copy and paste this tag into the [Advanced Online Catalog Search Form](#) in the "Tags" box. If documents are not tagged or you wish to contribute, see the [Citizen Archivist Program](#).

#### Personal archival assistance:

For additional help in finding records of the Kewa Pueblo, email the archivists at the National Archives at Denver ([denver.archives@nara.gov](mailto:denver.archives@nara.gov)), the National Archives at Riverside ([riverside.archives@nara.gov](mailto:riverside.archives@nara.gov)), or contact the [National Archives in Washington D.C.](#) Organizations listed on the [New Mexico Native Communities](#) page may also provide research assistance.

#### Searching in the [National Archives Online Catalog](#)

**Slashes (/) separate individual search strings.** Copy and paste or type exactly, including quotation marks if present. Also, try using a word from each of the community's other names and locations. See associated video for more detailed instructions.

**Suggested Search Terms: "Santo Domingo Pueblo" NOT "Master File" / "Kewa Pueblo" / Kiua Pueblo / "Pueblo of Santo Domingo"**

**Related Searches: "Sandoval County" "New Mexico"**

**This community may also have been recorded as: Kewa Pueblo / Kewa / Kiua / Pueblo of Santo Domingo / Santo Domingo Pueblo / Tó Hájiiloh / Gipuy / Kewa Pueblo**

**Additional Resources:** The following sources may provide important background information and ideas for additional search terms.

**Kewa Pueblo** website: <http://santodomingotribe.org/>

**Wikipedia (general information only):** [https://en.wikipedia.org/wiki/Kewa\\_Pueblo,\\_New\\_Mexico](https://en.wikipedia.org/wiki/Kewa_Pueblo,_New_Mexico) and <https://en.wikipedia.org/wiki/Pueblos> and [https://en.wikipedia.org/wiki/Keresan\\_languages](https://en.wikipedia.org/wiki/Keresan_languages)

**Also see:** Paul Kirchhoff, "Gatherers and Farmers in the Greater Southwest: A Problem in Classification", *American Anthropologist*, New Series, Vol. 56, No. 4, Southwest Issue (August 1954), pp. 529-550 and the Indian Pueblo Cultural Center at <https://www.indianpueblo.org/19-pueblos/pueblos/>

#### Links to additional information (search each by tribe name):

Federal Register (recent rulings and issues): <https://www.federalregister.gov/>

Native Languages: <http://www.native-languages.org>

National Indian Law Library: <http://www.narf.org/nill/tribes/>

American Philosophical Society Indigenous Subject Guide: <https://search.amphilsoc.org/natam/search>

Library of Congress: <https://www.loc.gov/>

#### Bureau of Indian Affairs (BIA) Records (Record Group 75):

To focus on BIA records in the Online Catalog, use "advanced search" and enter 75 into the Record Group field.

Although important, the BIA is only one of many Federal agencies containing important records of Native Communities. For various reasons there are often periods of time where BIA records are not available for individual tribes. Other techniques should be used for these periods, such as searching by geographic area and/or time-period and widening the search to include ALL Federal agencies.

Community records could also be "buried" in BIA agency files not described in the Online Catalog in great enough detail to be searched directly by community name. Doing an advanced search using one or two words from the BIA office name or the entire office name in quotes, along with Record Group 75, may be beneficial. Some BIA offices known to hold **Kewa Pueblo** records follow:

1850-1874 New Mexico Superintendency, 1871-1900 Pueblo Agency, 1877-1989 Albuquerque Area Office, 1899-1935 Zuni Agency, 1911-1935 Northern Pueblos Agency, 1911-1935 Southern Pueblos Agency, 1927-1952 Phoenix Area Office, 1935-1977 United Pueblos Agency

# Mescalero Apache Tribe of the Mescalero Reservation, New Mexico

## Mescalero, Mimbreno, Chiricahua, and Lipan Apache

To hear modern Native Community names spoken aloud, see [National Indian Law Library](#).

**Always consult the Native People themselves for most accurate information, either through their website or in person.**

**Current Community Headquarters:** **Mescalero, New Mexico**

### Citizen Archivist Catalog Tag: **NT435**

To find documents already tagged, copy and paste this tag into the [Advanced Online Catalog Search Form](#) in the "Tags" box. If documents are not tagged or you wish to contribute, see the [Citizen Archivist Program](#).

### Personal archival assistance:

For additional help in finding records of the Mescalero Apache, email the archivists at the National Archives at Denver ([denver.archives@nara.gov](mailto:denver.archives@nara.gov)) or contact the [National Archives in Washington D.C.](#) Organizations listed on the [New Mexico Native Communities](#) page may also provide research assistance.

### Searching in the [National Archives Online Catalog](#)

Slashes (/) separate individual search strings. Copy and paste or type exactly, including quotation marks if present. Also, try using a word from each of the community's other names and locations. See associated video for more detailed instructions.

**Suggested Search Terms:** **"Mescalero Apache" / Mescalero (advanced search using Record Group 75)**

**Related Searches:** **"Otero County" "New Mexico"**

**This community may also have been recorded as:**

**Mescalero Apache / Mescalero / Shis-Inday / "people of the mountain forests" / Mashgalénde / "people close to the mountains" / Naashgalí Dine'é / Inday / Indee / Nadahéndé / Mescalero Reservation**

---

**Additional Resources:** The following sources may provide important background information and ideas for additional search terms.

**Mescalero Apache** website: <https://mescaleroapachetribe.com/>

**Wikipedia (general information only):** <https://en.wikipedia.org/wiki/Mescalero> and <https://en.wikipedia.org/wiki/Chiricahua> and [https://en.wikipedia.org/wiki/Lipan\\_Apache\\_people](https://en.wikipedia.org/wiki/Lipan_Apache_people)

**Also see:** <https://mescaleroapachetribe.com/our-culture> contains a wonderful review of famous ancestors and important cultural observances.

### Links to additional Information (search each by tribe name):

Federal Register (recent rulings and issues): <https://www.federalregister.gov/>

Native Languages: <http://www.native-languages.org>

National Indian Law Library: <http://www.narf.org/nill/tribes/>

American Philosophical Society Indigenous Subject Guide: <https://search.amphilsoc.org/natam/search>

Library of Congress: <https://www.loc.gov/>

---

### Bureau of Indian Affairs (BIA) Records (Record Group 75):

To focus on BIA records in the Online Catalog, use "advanced search" and enter 75 into the Record Group field.

Although important, the BIA is only one of many Federal agencies containing important records of Native Communities. For various reasons there are often periods of time where BIA records are not available for individual tribes. Other techniques should be used for these periods, such as searching by geographic area and/or time-period and widening the search to include ALL Federal agencies.

Community records could also be "buried" in BIA agency files not described in the Online Catalog in great enough detail to be searched directly by community name. Doing an advanced search using one or two words from the BIA office name or the entire office name in quotes, along with Record Group 75, may be beneficial. Some BIA offices known to hold **Mescalero Apache** records follow:

1850-1874 New Mexico Superintendency, 1874-1901 Pueblo and Jicarilla Agency, 1874-1946 Mescalero Agency, 1875-1876 Cimarron Agency, 1875-1878 Abiquiu Agency, 1877-1989 Albuquerque Area Office, 1901-1966 Jicarilla Agency



## Navajo Nation, Arizona, New Mexico & Utah

### Navajo

To hear modern Native Community names spoken aloud, see [National Indian Law Library](#).

**Always consult the Native People themselves for most accurate information, either through their website or in person.**

**Current Community Headquarters:** [Ramah, New Mexico](#)

#### Citizen Archivist Catalog Tag: **NT251b**

To find documents already tagged, copy and paste this tag into the [Advanced Online Catalog Search Form](#) in the "Tags" box. If documents are not tagged or you wish to contribute, see the [Citizen Archivist Program](#).

#### Personal archival assistance:

For additional help in finding records of the Navajo Nation, email the archivists at the National Archives at Riverside ([riverside.archives@nara.gov](mailto:riverside.archives@nara.gov)), the National Archives at Denver ([denver.archives@nara.gov](mailto:denver.archives@nara.gov)), or contact the [National Archives in Washington D.C.](#) Organizations listed on the [New Mexico Native Communities](#) page may also provide research assistance.

#### Searching in the [National Archives Online Catalog](#)

Slashes (/) separate individual search strings. Copy and paste or type exactly, including quotation marks if present. Also, try using a word from each of the community's other names and locations. See associated video for more detailed instructions.

**Suggested Search Terms:** "[Navajo Nation](#)" / [Diné](#) / [Navajo Arizona](#) / [Navajo "New Mexico"](#) / [Navajo Utah](#) / [Navaho Arizona](#) / [Navaho "New Mexico"](#) / [Navaho Utah](#) / [Navajo "Code Talkers"](#) / "[Bosque Redondo](#)"

**Related Searches:** "[Apache County](#)" [Arizona](#) / "[Coconino County](#)" [Arizona](#) / "[Navajo County](#)" [Arizona](#) / "[Bernalillo County](#)" "[New Mexico](#)" / "[Cibola County](#)" "[New Mexico](#)" / "[McKinley County](#)" "[New Mexico](#)" / "[Rio Arriba County](#)" "[New Mexico](#)" / "[Sandoval County](#)" "[New Mexico](#)" / "[San Juan County](#)" "[New Mexico](#)" / "[Socorro County](#)" "[New Mexico](#)" / "[San Juan County](#)" [Utah](#)

This community may also have been recorded as: [Navajo](#) / [Navaho](#) / [Naabeehó Bináhásdzo](#) / [Navajo Indian Reservation](#) / [Navajo Reservation](#) / [Alamo Reservation](#) / [Cononcio Reservation](#)

---

**Additional Resources:** The following sources may provide important background information and ideas for additional search terms.

**Navajo Nation** website: <http://www.navajo-nsn.gov/>

**Wikipedia (general information only):** [https://en.wikipedia.org/wiki/Navajo\\_Nation](https://en.wikipedia.org/wiki/Navajo_Nation) and <https://en.wikipedia.org/wiki/Navajo>

**Links to additional information (search each by tribe name):**

Federal Register (recent rulings and issues): <https://www.federalregister.gov/>

Native Languages: <http://www.native-languages.org>

National Indian Law Library: <http://www.narf.org/nill/tribes/>

American Philosophical Society Indigenous Subject Guide: <https://search.amphilsoc.org/natam/search>

Library of Congress: <https://www.loc.gov/>

---

#### **Bureau of Indian Affairs (BIA) Records (Record Group 75):**

To focus on BIA records in the Online Catalog, use "advanced search" and enter 75 into the Record Group field.

Although important, the BIA is only one of many Federal agencies containing important records of Native Communities. For various reasons there are often periods of time where BIA records are not available for individual tribes. Other techniques should be used for these periods, such as searching by geographic area and/or time-period and widening the search to include ALL Federal agencies.

Community records could also be "buried" in BIA agency files not described in the Online Catalog in great enough detail to be searched directly by community name. Doing an advanced search using one or two words from the BIA office name or the entire office name in quotes, along with Record Group 75, may be beneficial. Some BIA offices known to hold **Navajo Nation** records follow:

1940-1980 Shiprock Subagency, 1944-1958 Tuba City Subagency, 1949-1955 Northern Navajo Agency, 1952-1961 Eastern Navajo Subagency, 1952-1961 Window Rock Area Office, 1953-1980 Tuba City Subagency, 1961-1970 Navajo Agency, 1961-1977 Holbrook Sub-Office, 1968-1980 Page Sub-Office, 1971-1975 Kayenta Sub-Office, 1972-1975 Leupp Sub-Office

Suggested web-links outside the National Archives website are provided for informational purposes only and do not imply endorsement of any organization or program by the National Archives and Records Administration.

National Archives Native Communities Research Guides. <https://www.archives.gov/education/native-communities>

## Ohkay Owingeh, New Mexico

### Pueblo (Tewa-speaking)

To hear modern Native Community names spoken aloud, see [National Indian Law Library](#).

**Always consult the Native People themselves for most accurate information, either through their website or in person.**

**Current Community Headquarters:** **Ohkay Owingeh, New Mexico**

#### Citizen Archivist Catalog Tag: **NT426**

To find documents already tagged, copy and paste this tag into the [Advanced Online Catalog Search Form](#) in the "Tags" box. If documents are not tagged or you wish to contribute, see the [Citizen Archivist Program](#).

#### Personal archival assistance:

For additional help in finding records of the Ohkay Owingeh Community, email the archivists at the National Archives at Denver ([denver.archives@nara.gov](mailto:denver.archives@nara.gov)), the National Archives at Riverside ([riverside.archives@nara.gov](mailto:riverside.archives@nara.gov)) or contact the [National Archives in Washington D.C.](#) Organizations listed on the [New Mexico Native Communities](#) page may also provide research assistance.

#### Searching in the [National Archives Online Catalog](#)

Slashes (/) separate individual search strings. Copy and paste or type exactly, including quotation marks if present. Also, try using a word from each of the community's other names and locations. See associated video for more detailed instructions.

**Suggested Search Terms:** "Ohkay Owingeh" / "San Juan Pueblo" NOT "Master File" / "San Juan" Pueblo (advanced search using Record Group 75) / "Pueblo of San Juan"

**Related Searches:** "Rio Arriba County" "New Mexico"

**This community may also have been recorded as:** **Ohkay Owingeh / San Juan Pueblo / "place of the strong people" / Pueblo of San Juan**

**Additional Resources:** The following sources may provide important background information and ideas for additional search terms.

Ohkay Owingeh website: None found

**Wikipedia (general information only):** [https://en.wikipedia.org/wiki/Ohkay\\_Owingeh,\\_New\\_Mexico](https://en.wikipedia.org/wiki/Ohkay_Owingeh,_New_Mexico) and [https://en.wikipedia.org/wiki/Eight\\_Northern\\_Pueblos](https://en.wikipedia.org/wiki/Eight_Northern_Pueblos) and <https://en.wikipedia.org/wiki/Puebloans> and <https://en.wikipedia.org/wiki/Tewa>  
**Also see:** The Indian Pueblo Cultural Center at <https://www.indianpueblo.org/19-pueblos/pueblos/>

#### Links to additional information (search each by tribe name):

Federal Register (recent rulings and issues): <https://www.federalregister.gov/>

Native Languages: <http://www.native-languages.org>

National Indian Law Library: <http://www.narf.org/niil/tribes/>

American Philosophical Society Indigenous Subject Guide: <https://search.amphilsoc.org/natam/search>

Library of Congress: <https://www.loc.gov/>

#### **Bureau of Indian Affairs (BIA) Records (Record Group 75):**

To focus on BIA records in the Online Catalog, use "advanced search" and enter 75 into the Record Group field.

Although important, the BIA is only one of many Federal agencies containing important records of Native Communities. For various reasons there are often periods of time where BIA records are not available for individual tribes. Other techniques should be used for these periods, such as searching by geographic area and/or time-period and widening the search to include ALL Federal agencies.

Community records could also be "buried" in BIA agency files not described in the Online Catalog in great enough detail to be searched directly by community name. Doing an advanced search using one or two words from the BIA office name or the entire office name in quotes, along with Record Group 75, may be beneficial. Some BIA offices known to hold **Ohkay Owingeh** records follow:

1850-1874 New Mexico Superintendency, 1871-1900 Pueblo Agency, 1877-1989 Albuquerque Area Office, 1899-1935 Zuni Agency, 1911-1935 Northern Pueblos Agency, 1911-1935 Southern Pueblos Agency, 1927-1952 Phoenix Area Office, 1935-1977 United Pueblos Agency

## Pueblo of Acoma, New Mexico

### Pueblo (Western Keres speaking)

To hear modern Native Community names spoken aloud, see [National Indian Law Library](#).

**Always consult the Native People themselves for most accurate information, either through their website or in person.**

**Current Community Headquarters:** **Acoma, New Mexico**

#### Citizen Archivist Catalog Tag: **NT443**

To find documents already tagged, copy and paste this tag into the [Advanced Online Catalog Search Form](#) in the "Tags" box. If documents are not tagged or you wish to contribute, see the [Citizen Archivist Program](#).

#### Personal archival assistance:

For additional help in finding records of the Acoma Pueblo, email the archivists at the National Archives at Denver ([denver.archives@nara.gov](mailto:denver.archives@nara.gov)), the National Archives at Riverside ([riverside.archives@nara.gov](mailto:riverside.archives@nara.gov)), or contact the [National Archives in Washington D.C.](#) Organizations listed on the [New Mexico Native Communities](#) page may also provide research assistance.

#### Searching in the [National Archives Online Catalog](#)

Slashes (/) separate individual search strings. Copy and paste or type exactly, including quotation marks if present. Also, try using a word from each of the community's other names and locations. See associated video for more detailed instructions.

**Suggested Search Terms:** "**Acoma Pueblo**" / "**Pueblo of Acoma**" / **Acoma Pueblo** (advanced search using **Record Group 75**) / **Acoma "New Mexico" NOT Commerce**

**Related Searches:** "**Cibola County**" "**New Mexico**"

**This community may also have been recorded as:** **Acoma Pueblo / Acoma / Akome / Haak'u / Acu / Acuo / Ako / "a place always prepared" / (Four Villages: Sky City (Old Acoma), Acomita, Anzac, and McCarty's) / Pueblo of Acoma**

**Additional Resources:** The following sources may provide important background information and ideas for additional search terms.

**Acoma Pueblo** website: <http://www.puebloofacoma.org/>

**Wikipedia (general information only):** [https://en.wikipedia.org/wiki/Acoma\\_Pueblo](https://en.wikipedia.org/wiki/Acoma_Pueblo) and <https://en.wikipedia.org/wiki/Pueblos> and [https://en.wikipedia.org/wiki/Keresan\\_languages](https://en.wikipedia.org/wiki/Keresan_languages)

**Also see:** <http://www.acomaskycity.org/main.html?pgid=11> (Sky City Cultural Center) contains historic and cultural information and the Indian Pueblo Cultural Center at <https://www.indianpueblo.org/19-pueblos/pueblos/>

#### Links to additional information (search each by tribe name):

Federal Register (recent rulings and issues): <https://www.federalregister.gov/>

Native Languages: <http://www.native-languages.org>

National Indian Law Library: <http://www.narf.org/nill/tribes/>

American Philosophical Society Indigenous Subject Guide: <https://search.amphilsoc.org/natam/search>

Library of Congress: <https://www.loc.gov/>

#### Bureau of Indian Affairs (BIA) Records (Record Group 75):

To focus on BIA records in the Online Catalog, use "advanced search" and enter 75 into the Record Group field.

Although important, the BIA is only one of many Federal agencies containing important records of Native Communities. For various reasons there are often periods of time where BIA records are not available for individual tribes. Other techniques should be used for these periods, such as searching by geographic area and/or time-period and widening the search to include ALL Federal agencies.

Community records could also be "buried" in BIA agency files not described in the Online Catalog in great enough detail to be searched directly by community name. Doing an advanced search using one or two words from the BIA office name or the entire office name in quotes, along with Record Group 75, may be beneficial. Some BIA offices known to hold **Acoma Pueblo** records follow:

1850-1874 New Mexico Superintendency, 1871-1900 Pueblo Agency, 1877-1989 Albuquerque Area Office, 1899-1935 Zuni Agency, 1911-1935 Northern Pueblos Agency, 1911-1935 Southern Pueblos Agency, 1927-1952 Phoenix Area Office, 1935-1977 United Pueblos Agency

## Pueblo of Cochiti, New Mexico

### Pueblo (Eastern Keres speaking)

To hear modern Native Community names spoken aloud, see [National Indian Law Library](#).

**Always consult the Native People themselves for most accurate information, either through their website or in person.**

**Current Community Headquarters:** **Cochiti, New Mexico**

#### Citizen Archivist Catalog Tag: **NT439**

To find documents already tagged, copy and paste this tag into the [Advanced Online Catalog Search Form](#) in the "Tags" box. If documents are not tagged or you wish to contribute, see the [Citizen Archivist Program](#).

#### Personal archival assistance:

For additional help in finding records of the Cochiti Pueblo Community, email the archivists at the National Archives at Denver (denver.archives@nara.gov), the National Archives at Riverside (riverside.archives@nara.gov), or contact the [National Archives in Washington D.C.](#) Organizations listed on the [New Mexico Native Communities](#) page may also provide research assistance.

#### Searching in the [National Archives Online Catalog](#)

Slashes (/) separate individual search strings. Copy and paste or type exactly, including quotation marks if present. Also, try using a word from each of the community's other names and locations. See associated video for more detailed instructions.

**Suggested Search Terms:** **"Cochiti Pueblo" / Cochiti Pueblo (advanced search using Record Group 75) / "Pueblo of Cochiti" / Cochiti "New Mexico" NOT "Master File" AND NOT "Puerto Rican"**

**Related Searches:** **"Sandoval County" "New Mexico"**

**This community may also have been recorded as:** **Cochiti Pueblo / Ko-Tyit / Pueblo of Cochiti**

**Additional Resources:** The following sources may provide important background information and ideas for additional search terms.

**Cochiti Pueblo** website: None found

**Wikipedia (general information only):** [https://en.wikipedia.org/wiki/Cochiti,\\_New\\_Mexico](https://en.wikipedia.org/wiki/Cochiti,_New_Mexico) and <https://en.wikipedia.org/wiki/Pueblos> and [https://en.wikipedia.org/wiki/Keresan\\_languages](https://en.wikipedia.org/wiki/Keresan_languages)

**Also see:** Eagle Dance performed by Cochiti Pueblo members at Smithsonian Institution in 2000 at <https://www.youtube.com/watch?v=ZErXZT9B5iE> and the Indian Pueblo Cultural Center at <https://www.indianpueblo.org/19-pueblos/pueblos/> and Kasha-Katuwe Tent Rocks National Monument at <https://www.blm.gov/visit/kktr>

#### Links to additional information (search each by tribe name):

Federal Register (recent rulings and issues): <https://www.federalregister.gov/>

Native Languages: <http://www.native-languages.org>

National Indian Law Library: <http://www.narf.org/nill/tribes/>

American Philosophical Society Indigenous Subject Guide: <https://search.amphilsoc.org/natam/search>

Library of Congress: <https://www.loc.gov/>

#### Bureau of Indian Affairs (BIA) Records (Record Group 75):

To focus on BIA records in the Online Catalog, use "advanced search" and enter 75 into the Record Group field.

Although important, the BIA is only one of many Federal agencies containing important records of Native Communities. For various reasons there are often periods of time where BIA records are not available for individual tribes. Other techniques should be used for these periods, such as searching by geographic area and/or time-period and widening the search to include ALL Federal agencies.

Community records could also be "buried" in BIA agency files not described in the Online Catalog in great enough detail to be searched directly by community name. Doing an advanced search using one or two words from the BIA office name or the entire office name in quotes, along with Record Group 75, may be beneficial. Some BIA offices known to hold **Cochiti Pueblo** records follow:

1850-1874 New Mexico Superintendency, 1871-1900 Pueblo Agency, 1877-1989 Albuquerque Area Office, 1899-1935 Zuni Agency, 1911-1935 Northern Pueblos Agency, 1911-1935 Southern Pueblos Agency, 1927-1952 Phoenix Area Office, 1935-1977 United Pueblos Agency

## Pueblo of Isleta, New Mexico

### Pueblo (Southern Tiwa-speaking)

To hear modern Native Community names spoken aloud, see [National Indian Law Library](#).

**Always consult the Native People themselves for most accurate information, either through their website or in person.**

**Current Community Headquarters:** **Isleta, New Mexico**

#### Citizen Archivist Catalog Tag: **NT438**

To find documents already tagged, copy and paste this tag into the [Advanced Online Catalog Search Form](#) in the "Tags" box. If documents are not tagged or you wish to contribute, see the [Citizen Archivist Program](#).

#### Personal archival assistance:

For additional help in finding records of the Isleta Pueblo, email the archivists at the National Archives at Denver ([denver.archives@nara.gov](mailto:denver.archives@nara.gov)), the National Archives at Riverside ([riverside.archives@nara.gov](mailto:riverside.archives@nara.gov)), or contact the [National Archives in Washington D.C.](#) Organizations listed on the [New Mexico Native Communities](#) page may also provide research assistance.

#### Searching in the [National Archives Online Catalog](#)

Slashes (/) separate individual search strings. Copy and paste or type exactly, including quotation marks if present. Also, try using a word from each of the community's other names and locations. See associated video for more detailed instructions.

**Suggested Search Terms:** **"Isleta Pueblo" / Isleta Pueblo (advanced search using Record Group 75) / "Pueblo of Isleta" / Isleta Pueblo NOT "Master File" AND NOT "Department of State" / Isleta "New Mexico" NOT Commerce**

**Related Searches:** **"Bernalillo County" "New Mexico" / "Torrence County" "New Mexico" / "Valencia County" "New Mexico"**

**This community may also have been recorded as:** **Isleta / Isleta Pueblo / POI / Tue-I / Shiewhibak / Naatohó / Pueblo of Isleta**

---

**Additional Resources:** The following sources may provide important background information and ideas for additional search terms.

Isleta Pueblo website: <https://isletapueblo.com/index.html>

Wikipedia (general information only): [https://en.wikipedia.org/wiki/Pueblo\\_of\\_Isleta](https://en.wikipedia.org/wiki/Pueblo_of_Isleta) and <https://en.wikipedia.org/wiki/Pueblos> and [https://en.wikipedia.org/wiki/Tiwa\\_languages](https://en.wikipedia.org/wiki/Tiwa_languages)

Also see: Tribal newsletters at <https://isletapueblo.com/newsletters.html> and the Indian Pueblo Cultural Center at <https://www.indianpueblo.org/19-pueblos/pueblos/>

#### Links to additional information (search each by tribe name):

Federal Register (recent rulings and issues): <https://www.federalregister.gov/>

Native Languages: <http://www.native-languages.org>

National Indian Law Library: <http://www.narf.org/nill/tribes/>

American Philosophical Society Indigenous Subject Guide: <https://search.amphilsoc.org/natam/search>

Library of Congress: <https://www.loc.gov/>

---

#### Bureau of Indian Affairs (BIA) Records (Record Group 75):

To focus on BIA records in the Online Catalog, use "advanced search" and enter 75 into the Record Group field.

Although important, the BIA is only one of many Federal agencies containing important records of Native Communities. For various reasons there are often periods of time where BIA records are not available for individual tribes. Other techniques should be used for these periods, such as searching by geographic area and/or time-period and widening the search to include ALL Federal agencies.

Community records could also be "buried" in BIA agency files not described in the Online Catalog in great enough detail to be searched directly by community name. Doing an advanced search using one or two words from the BIA office name or the entire office name in quotes, along with Record Group 75, may be beneficial. Some BIA offices known to hold **Isleta Pueblo** records follow:

1850-1874 New Mexico Superintendency, 1871-1900 Pueblo Agency, 1877-1989 Albuquerque Area Office, 1899-1935 Zuni Agency, 1911-1935 Northern Pueblos Agency, 1911-1935 Southern Pueblos Agency, 1927-1952 Phoenix Area Office, 1935-1977 United Pueblos Agency

## Pueblo of Jemez, New Mexico

### Pueblo (Towa-speaking)

To hear modern Native Community names spoken aloud, see [National Indian Law Library](#).

**Always consult the Native People themselves for most accurate information, either through their website or in person.**

**Current Community Headquarters:** **Jemez Pueblo, New Mexico**

#### Citizen Archivist Catalog Tag: **NT437**

To find documents already tagged, copy and paste this tag into the [Advanced Online Catalog Search Form](#) in the "Tags" box. If documents are not tagged or you wish to contribute, see the [Citizen Archivist Program](#).

#### Personal archival assistance:

For additional help in finding records of the Jemez Pueblo, email the archivists at the National Archives at Denver ([denver.archives@nara.gov](mailto:denver.archives@nara.gov)), the National Archives at Riverside ([riverside.archives@nara.gov](mailto:riverside.archives@nara.gov)), or contact the [National Archives in Washington D.C.](#) Organizations listed on the [New Mexico Native Communities](#) page may also provide research assistance.

#### Searching in the [National Archives Online Catalog](#)

Slashes (/) separate individual search strings. Copy and paste or type exactly, including quotation marks if present. Also, try using a word from each of the community's other names and locations. See associated video for more detailed instructions.

**Suggested Search Terms:** **"Jemez Pueblo" NOT "Master File" AND NOT Alaska / Jemez (advanced search using Record Group 75) / "Pueblo of Jemez" / Jemez "New Mexico" NOT Commerce**

**Related Searches:** **"Sandoval County" "New Mexico"**

**This community may also have been recorded as:** **Jemez / Jemez Pueblo / Walatowa / Ma'ii Deeshgiizh / Pueblo of Jemez**

**Additional Resources:** The following sources may provide important background information and ideas for additional search terms.

Jemez Pueblo website: <http://www.jemezpuablo.org/>

Wikipedia (general information only): [https://en.wikipedia.org/wiki/Jemez\\_Pueblo,\\_New\\_Mexico](https://en.wikipedia.org/wiki/Jemez_Pueblo,_New_Mexico) and <https://en.wikipedia.org/wiki/Pueblos> and [https://en.wikipedia.org/wiki/Jemez\\_language](https://en.wikipedia.org/wiki/Jemez_language)

Also see: The Indian Pueblo Cultural Center at <https://www.indianpuablo.org/19-pueblos/pueblos/>

#### Links to additional Information (search each by tribe name):

Federal Register (recent rulings and issues): <https://www.federalregister.gov/>

Native Languages: <http://www.native-languages.org>

National Indian Law Library: <http://www.narf.org/nill/tribes/>

American Philosophical Society Indigenous Subject Guide: <https://search.amphilsoc.org/natam/search>

Library of Congress: <https://www.loc.gov/>

#### Bureau of Indian Affairs (BIA) Records (Record Group 75):

To focus on BIA records in the Online Catalog, use "advanced search" and enter 75 into the Record Group field.

Although important, the BIA is only one of many Federal agencies containing important records of Native Communities. For various reasons there are often periods of time where BIA records are not available for individual tribes. Other techniques should be used for these periods, such as searching by geographic area and/or time-period and widening the search to include ALL Federal agencies.

Community records could also be "buried" in BIA agency files not described in the Online Catalog in great enough detail to be searched directly by community name. Doing an advanced search using one or two words from the BIA office name or the entire office name in quotes, along with Record Group 75, may be beneficial. Some BIA offices known to hold **Jemez Pueblo** records follow:

1850-1874 New Mexico Superintendency, 1871-1900 Pueblo Agency, 1877-1989 Albuquerque Area Office, 1899-1935 Zuni Agency, 1911-1935 Northern Pueblos Agency, 1911-1935 Southern Pueblos Agency, 1927-1952 Phoenix Area Office, 1935-1977 United Pueblos Agency

## Pueblo of Laguna, New Mexico

### Pueblo (Western Keres speaking)

To hear modern Native Community names spoken aloud, see [National Indian Law Library](#).

**Always consult the Native People themselves for most accurate information, either through their website or in person.**

**Current Community Headquarters:** **Laguna, New Mexico**

#### Citizen Archivist Catalog Tag: **NT436**

To find documents already tagged, copy and paste this tag into the [Advanced Online Catalog Search Form](#) in the "Tags" box. If documents are not tagged or you wish to contribute, see the [Citizen Archivist Program](#).

#### Personal archival assistance:

For additional help in finding records of the Laguna Pueblo, email the archivists at the National Archives at Denver ([denver.archives@nara.gov](mailto:denver.archives@nara.gov)), the National Archives at Riverside ([riverside.archives@nara.gov](mailto:riverside.archives@nara.gov)), or contact the [National Archives in Washington D.C.](#) Organizations listed on the [New Mexico Native Communities](#) page may also provide research assistance.

#### Searching in the [National Archives Online Catalog](#)

Slashes (/) separate individual search strings. Copy and paste or type exactly, including quotation marks if present. Also, try using a word from each of the community's other names and locations. See associated video for more detailed instructions.

**Suggested Search Terms:** "Laguna Pueblo" NOT "Master File" / "Pueblo of Laguna" / Laguna "New Mexico" NOT Commerce AND NOT Transportation

**Related Searches:** "Valencia County" "New Mexico" / "Bernalillo County" "New Mexico" / "Sandoval County" "New Mexico"

**This community may also have been recorded as:** **Laguna Pueblo / Ka'waika / Pueblo of Laguna**

**Additional Resources:** The following sources may provide important background information and ideas for additional search terms.

**Laguna Pueblo** website: <http://www.lagunapueblo-nsn.gov/>

**Wikipedia (general information only):** [https://en.wikipedia.org/wiki/Laguna\\_Pueblo](https://en.wikipedia.org/wiki/Laguna_Pueblo) and <https://en.wikipedia.org/wiki/Pueblos> and [https://en.wikipedia.org/wiki/Keresan\\_languages](https://en.wikipedia.org/wiki/Keresan_languages)

**Also see:** <http://www.lagunapueblo-nsn.gov/test2.aspx> (may be a temporary address). Dropdown under "Missions" provides good histories of each church at the Pueblo. Also the Indian Pueblo Cultural Center at <https://www.indianpueblo.org/19-pueblos/pueblos/>

#### Links to additional information (search each by tribe name):

Federal Register (recent rulings and issues): <https://www.federalregister.gov/>

Native Languages: <http://www.native-languages.org>

National Indian Law Library: <http://www.narf.org/nill/tribes/>

American Philosophical Society Indigenous Subject Guide: <https://search.amphilsoc.org/natam/search>

Library of Congress: <https://www.loc.gov/>

#### Bureau of Indian Affairs (BIA) Records (Record Group 75):

To focus on BIA records in the Online Catalog, use "advanced search" and enter 75 into the Record Group field.

Although important, the BIA is only one of many Federal agencies containing important records of Native Communities. For various reasons there are often periods of time where BIA records are not available for individual tribes. Other techniques should be used for these periods, such as searching by geographic area and/or time-period and widening the search to include ALL Federal agencies.

Community records could also be "buried" in BIA agency files not described in the Online Catalog in great enough detail to be searched directly by community name. Doing an advanced search using one or two words from the BIA office name or the entire office name in quotes, along with Record Group 75, may be beneficial. Some BIA offices known to hold **Laguna Pueblo** records follow:

1850-1874 New Mexico Superintendency, 1871-1900 Pueblo Agency, 1877-1989 Albuquerque Area Office, 1899-1935 Zuni Agency, 1911-1935 Northern Pueblos Agency, 1911-1935 Southern Pueblos Agency, 1927-1952 Phoenix Area Office, 1935-1977 United Pueblos Agency

## Pueblo of Nambe, New Mexico

### Pueblo (Tewa-speaking)

To hear modern Native Community names spoken aloud, see [National Indian Law Library](#).

**Always consult the Native People themselves for most accurate information, either through their website or in person.**

**Current Community Headquarters:** **Santa Fe, New Mexico**

#### Citizen Archivist Catalog Tag: **NT434**

To find documents already tagged, copy and paste this tag into the [Advanced Online Catalog Search Form](#) in the "Tags" box. If documents are not tagged or you wish to contribute, see the [Citizen Archivist Program](#).

#### Personal archival assistance:

For additional help in finding records of the Nambe Pueblo, email the archivists at the National Archives at Denver (denver.archives@nara.gov), the National Archives at Riverside (riverside.archives@nara.gov), or contact the [National Archives in Washington D.C.](#) Organizations listed on the [New Mexico Native Communities](#) page may also provide research assistance.

#### Searching in the [National Archives Online Catalog](#)

Slashes (/) separate individual search strings. Copy and paste or type exactly, including quotation marks if present. Also, try using a word from each of the community's other names and locations. See associated video for more detailed instructions.

**Suggested Search Terms:** **"Nambe Pueblo" / Nambe (advanced search using Record Group 75) / "Pueblo of Nambe" / Nambe "New Mexico" NOT "Puerto Rican" AND NOT "Master File"**

**Related Searches:** **"Santa Fe County" "New Mexico"**

**This community may also have been recorded as:** **Pueblo of Nambe / Nambe Pueblo / Nambe O-Ween-Ge / Nambe Owinge / Nambe Owingeh / Pueblo of Nambe**

---

**Additional Resources:** The following sources may provide important background information and ideas for additional search terms.

**Nambe Pueblo** website: <http://nambepueblo.org/>

**Wikipedia (general information only):** [https://en.wikipedia.org/wiki/Namb%C3%A9\\_Pueblo,\\_New\\_Mexico](https://en.wikipedia.org/wiki/Namb%C3%A9_Pueblo,_New_Mexico) and [https://en.wikipedia.org/wiki/Eight\\_Northern\\_Pueblos](https://en.wikipedia.org/wiki/Eight_Northern_Pueblos) and <https://en.wikipedia.org/wiki/Puebloans> and <https://en.wikipedia.org/wiki/Tewa>  
**Also see:** <http://nambepueblo.org/about-nambe-pueblo/> This website gives very nice history of the Pueblo with photographs. Also the Indian Pueblo Cultural Center at <https://www.indianpueblo.org/19-pueblos/pueblos/>

#### Links to additional information (search each by tribe name):

Federal Register (recent rulings and issues): <https://www.federalregister.gov/>

Native Languages: <http://www.native-languages.org>

National Indian Law Library: <http://www.narf.org/nill/tribes/>

American Philosophical Society Indigenous Subject Guide: <https://search.amphilsoc.org/natam/search>

Library of Congress: <https://www.loc.gov/>

---

#### Bureau of Indian Affairs (BIA) Records (Record Group 75):

To focus on BIA records in the Online Catalog, use "advanced search" and enter 75 into the Record Group field.

Although important, the BIA is only one of many Federal agencies containing important records of Native Communities. For various reasons there are often periods of time where BIA records are not available for individual tribes. Other techniques should be used for these periods, such as searching by geographic area and/or time-period and widening the search to include ALL Federal agencies.

Community records could also be "buried" in BIA agency files not described in the Online Catalog in great enough detail to be searched directly by community name. Doing an advanced search using one or two words from the BIA office name or the entire office name in quotes, along with Record Group 75, may be beneficial. Some BIA offices known to hold **Nambe Pueblo** records follow:

1850-1874 New Mexico Superintendency, 1871-1900 Pueblo Agency, 1877-1989 Albuquerque Area Office, 1899-1935 Zuni Agency, 1911-1935 Northern Pueblos Agency, 1911-1935 Southern Pueblos Agency, 1927-1952 Phoenix Area Office, 1935-1977 United Pueblos Agency



## Pueblo of Picuris, New Mexico

### Pueblo (Northern Tiwa-speaking)

To hear modern Native Community names spoken aloud, see [National Indian Law Library](#).

**Always consult the Native People themselves for most accurate information, either through their website or in person.**

**Current Community Headquarters:** **Penasco, New Mexico**

#### Citizen Archivist Catalog Tag: **NT433**

To find documents already tagged, copy and paste this tag into the [Advanced Online Catalog Search Form](#) in the "Tags" box. If documents are not tagged or you wish to contribute, see the [Citizen Archivist Program](#).

#### Personal archival assistance:

For additional help in finding records of the Picuris Pueblo, email the archivists at the National Archives at Denver ([denver.archives@nara.gov](mailto:denver.archives@nara.gov)), the National Archives at Riverside ([riverside.archives@nara.gov](mailto:riverside.archives@nara.gov)), or contact the [National Archives in Washington D.C.](#) Organizations listed on the [New Mexico Native Communities](#) page may also provide research assistance.

#### Searching in the [National Archives Online Catalog](#)

Slashes (/) separate individual search strings. Copy and paste or type exactly, including quotation marks if present. Also, try using a word from each of the community's other names and locations. See associated video for more detailed instructions.

**Suggested Search Terms:** **"Picuris Pueblo" / Picuris (advanced search using Record Group 75) / "Pueblo of Picuris" / Picuris "New Mexico" NOT Commerce**

**Related Searches:** **"Taos County" "New Mexico"**

**This community may also have been recorded as:** **Picuris Pueblo / Pe'ewi / Picuris / Pikuria / "for those who paint" / Pueblo of Picuris**

**Additional Resources:** The following sources may provide important background information and ideas for additional search terms.

Picuris Pueblo website: <http://www.picurispueblo.org/>

Wikipedia (general information only): [https://en.wikipedia.org/wiki/Picuris\\_Pueblo,\\_New\\_Mexico](https://en.wikipedia.org/wiki/Picuris_Pueblo,_New_Mexico) and [https://en.wikipedia.org/wiki/Eight\\_Northern\\_Pueblos](https://en.wikipedia.org/wiki/Eight_Northern_Pueblos) and <https://en.wikipedia.org/wiki/Puebloans> and [https://en.wikipedia.org/wiki/Tiwa\\_languages](https://en.wikipedia.org/wiki/Tiwa_languages)

Also see: <http://www.picurispueblo.org/photo-gallery-.html> includes many photographs of the Pueblo. Also the Indian Pueblo Cultural Center at <https://www.indianpueblo.org/19-pueblos/pueblos/>

#### Links to additional information (search each by tribe name):

Federal Register (recent rulings and issues): <https://www.federalregister.gov/>

Native Languages: <http://www.native-languages.org>

National Indian Law Library: <http://www.narf.org/nill/tribes/>

American Philosophical Society Indigenous Subject Guide: <https://search.amphilsoc.org/natam/search>

Library of Congress: <https://www.loc.gov/>

#### Bureau of Indian Affairs (BIA) Records (Record Group 75):

To focus on BIA records in the Online Catalog, use "advanced search" and enter 75 into the Record Group field.

Although important, the BIA is only one of many Federal agencies containing important records of Native Communities. For various reasons there are often periods of time where BIA records are not available for individual tribes. Other techniques should be used for these periods, such as searching by geographic area and/or time-period and widening the search to include ALL Federal agencies.

Community records could also be "buried" in BIA agency files not described in the Online Catalog in great enough detail to be searched directly by community name. Doing an advanced search using one or two words from the BIA office name or the entire office name in quotes, along with Record Group 75, may be beneficial. Some BIA offices known to hold **Picuris Pueblo** records follow:

1850-1874 New Mexico Superintendency, 1871-1900 Pueblo Agency, 1877-1989 Albuquerque Area Office, 1899-1935 Zuni Agency, 1911-1935 Northern Pueblos Agency, 1911-1935 Southern Pueblos Agency, 1927-1952 Phoenix Area Office, 1935-1977 United Pueblos Agency

## Pueblo of Pojoaque, New Mexico

### Pueblo (Tewa-speaking)

To hear modern Native Community names spoken aloud, see [National Indian Law Library](#).

**Always consult the Native People themselves for most accurate information, either through their website or in person.**

**Current Community Headquarters:** **Santa Fe, New Mexico**

#### Citizen Archivist Catalog Tag: **NT444**

To find documents already tagged, copy and paste this tag into the [Advanced Online Catalog Search Form](#) in the "Tags" box. If documents are not tagged or you wish to contribute, see the [Citizen Archivist Program](#).

#### Personal archival assistance:

For additional help in finding records of the Pojoaque Pueblo, email the archivists at the National Archives at Denver ([denver.archives@nara.gov](mailto:denver.archives@nara.gov)), the National Archives at Riverside ([riverside.archives@nara.gov](mailto:riverside.archives@nara.gov)), or contact the [National Archives in Washington D.C.](#) Organizations listed on the [New Mexico Native Communities](#) page may also provide research assistance.

#### Searching in the [National Archives Online Catalog](#)

Slashes (/) separate individual search strings. Copy and paste or type exactly, including quotation marks if present. Also, try using a word from each of the community's other names and locations. See associated video for more detailed instructions.

**Suggested Search Terms:** **Pojoaque NOT "Sample Files" AND NOT "Master File" / Pojoaque (advanced search using Record Group 75)**

**Related Searches:** **"Santa Fe County" "New Mexico"**

**This community may also have been recorded as:**  
**Pojoaque Pueblo / Pojoaque / Po-suwae-geh Owingeh / "water gathering place" / Pueblo of Pojoaque**

---

**Additional Resources:** The following sources may provide important background information and ideas for additional search terms.

Pojoaque Pueblo website: <https://pojoaque.org/>

Wikipedia (general information only): [https://en.wikipedia.org/wiki/Pojoaque,\\_New\\_Mexico](https://en.wikipedia.org/wiki/Pojoaque,_New_Mexico) and

[https://en.wikipedia.org/wiki/Eight\\_Northern\\_Pueblos](https://en.wikipedia.org/wiki/Eight_Northern_Pueblos) and <https://en.wikipedia.org/wiki/Puebloans> and <https://en.wikipedia.org/wiki/Tewa>

Also see: <https://pojoaque.org/community/> contains a video with flute and guitar music and photographs with some narration. Scroll down the page for written history of the Pueblo. Also the Indian Pueblo Cultural Center at <https://www.indianpueblo.org/19-pueblos/pueblos/>

#### Links to additional information (search each by tribe name):

Federal Register (recent rulings and issues): <https://www.federalregister.gov/>

Native Languages: <http://www.native-languages.org>

National Indian Law Library: <http://www.narf.org/nill/tribes/>

American Philosophical Society Indigenous Subject Guide: <https://search.amphilsoc.org/natam/search>

Library of Congress: <https://www.loc.gov/>

---

#### Bureau of Indian Affairs (BIA) Records (Record Group 75):

To focus on BIA records in the Online Catalog, use "advanced search" and enter 75 into the Record Group field.

Although important, the BIA is only one of many Federal agencies containing important records of Native Communities. For various reasons there are often periods of time where BIA records are not available for individual tribes. Other techniques should be used for these periods, such as searching by geographic area and/or time-period and widening the search to include ALL Federal agencies.

Community records could also be "buried" in BIA agency files not described in the Online Catalog in great enough detail to be searched directly by community name. Doing an advanced search using one or two words from the BIA office name or the entire office name in quotes, along with Record Group 75, may be beneficial. Some BIA offices known to hold **Pojoaque Pueblo** records follow:

1850-1874 New Mexico Superintendency, 1871-1900 Pueblo Agency, 1877-1989 Albuquerque Area Office, 1899-1935 Zuni Agency, 1911-1935 Northern Pueblos Agency, 1911-1935 Southern Pueblos Agency, 1927-1952 Phoenix Area Office, 1935-1977 United Pueblos Agency

## Pueblo of Sandia, New Mexico

### Pueblo (Southern Tiwa-speaking)

To hear modern Native Community names spoken aloud, see [National Indian Law Library](#).

**Always consult the Native People themselves for most accurate information, either through their website or in person.**

**Current Community Headquarters:** **Bernalillo, New Mexico**

#### Citizen Archivist Catalog Tag: **NT431**

To find documents already tagged, copy and paste this tag into the [Advanced Online Catalog Search Form](#) in the "Tags" box. If documents are not tagged or you wish to contribute, see the [Citizen Archivist Program](#).

#### Personal archival assistance:

For additional help in finding records of the Sandia Pueblo, email the archivists at the National Archives at Denver ([denver.archives@nara.gov](mailto:denver.archives@nara.gov)), the National Archives at Riverside ([riverside.archives@nara.gov](mailto:riverside.archives@nara.gov)), or contact the [National Archives in Washington D.C.](#) Organizations listed on the [New Mexico Native Communities](#) page may also provide research assistance.

#### Searching in the [National Archives Online Catalog](#)

Slashes (/) separate individual search strings. Copy and paste or type exactly, including quotation marks if present. Also, try using a word from each of the community's other names and locations. See associated video for more detailed instructions.

**Suggested Search Terms: "Sandia Pueblo" NOT "Master File" / Sandia Pueblo NOT Treasury AND NOT Oceanic AND NOT Transportation**

**Related Searches: "Sandoval County" "New Mexico"**

**This community may also have been recorded as: Sandia Pueblo / Na-Fiat / Katishtya / Tuf Shur Tia ("green reed place") / Nafiat ("place where the wind blows dust") / Pueblo of Sandia**

**Additional Resources:** The following sources may provide important background information and ideas for additional search terms.

**Sandia Pueblo** website: <https://www.sandiapueblo.nsn.us/>

**Wikipedia (general information only):** [https://en.wikipedia.org/wiki/Sandia\\_Pueblo](https://en.wikipedia.org/wiki/Sandia_Pueblo) and <https://en.wikipedia.org/wiki/Pueblos> and [https://en.wikipedia.org/wiki/Tiwa\\_languages](https://en.wikipedia.org/wiki/Tiwa_languages)

**Also see:** The Indian Pueblo Cultural Center at <https://www.indianpueblo.org/19-pueblos/pueblos/>

#### Links to additional Information (search each by tribe name):

Federal Register (recent rulings and issues): <https://www.federalregister.gov/>

Native Languages: <http://www.native-languages.org>

National Indian Law Library: <http://www.narf.org/nill/tribes/>

American Philosophical Society Indigenous Subject Guide: <https://search.amphilsoc.org/natam/search>

Library of Congress: <https://www.loc.gov/>

#### Bureau of Indian Affairs (BIA) Records (Record Group 75):

To focus on BIA records in the Online Catalog, use "advanced search" and enter 75 into the Record Group field.

Although important, the BIA is only one of many Federal agencies containing important records of Native Communities. For various reasons there are often periods of time where BIA records are not available for individual tribes. Other techniques should be used for these periods, such as searching by geographic area and/or time-period and widening the search to include ALL Federal agencies.

Community records could also be "buried" in BIA agency files not described in the Online Catalog in great enough detail to be searched directly by community name. Doing an advanced search using one or two words from the BIA office name or the entire office name in quotes, along with Record Group 75, may be beneficial. Some BIA offices known to hold **Sandia Pueblo** records follow:

1850-1874 New Mexico Superintendency, 1871-1900 Pueblo Agency, 1877-1989 Albuquerque Area Office, 1899-1935 Zuni Agency, 1911-1935 Northern Pueblos Agency, 1911-1935 Southern Pueblos Agency, 1927-1952 Phoenix Area Office, 1935-1977 United Pueblos Agency

## Pueblo of San Felipe, New Mexico

### Pueblo (Eastern Keres speaking)

To hear modern Native Community names spoken aloud, see [National Indian Law Library](#).

**Always consult the Native People themselves for most accurate information, either through their website or in person.**

**Current Community Headquarters:** **San Felipe Pueblo, New Mexico**

#### Citizen Archivist Catalog Tag: **NT425**

To find documents already tagged, copy and paste this tag into the [Advanced Online Catalog Search Form](#) in the "Tags" box. If documents are not tagged or you wish to contribute, see the [Citizen Archivist Program](#).

#### Personal archival assistance:

For additional help in finding records of the San Felipe Pueblo, email the archivists at the National Archives at Denver ([denver.archives@nara.gov](mailto:denver.archives@nara.gov)), the National Archives at Riverside ([riverside.archives@nara.gov](mailto:riverside.archives@nara.gov)), or contact the [National Archives in Washington D.C.](#) Organizations listed on the [New Mexico Native Communities](#) page may also provide research assistance.

#### Searching in the [National Archives Online Catalog](#)

Slashes (/) separate individual search strings. Copy and paste or type exactly, including quotation marks if present. Also, try using a word from each of the community's other names and locations. See associated video for more detailed instructions.

**Suggested Search Terms:** **"San Felipe Pueblo" NOT Defense / "Pueblo of San Felipe" / "San Felipe" "New Mexico" NOT Commerce AND NOT Transportation**

**Related Searches:** **"Sandoval County" "New Mexico"**

**This community may also have been recorded as:** **San Felipe Pueblo / Katishtya / Pueblo of San Felipe**

**Additional Resources:** The following sources may provide important background information and ideas for additional search terms.

San Felipe Pueblo website: None found

**Wikipedia (general information only):** [https://en.wikipedia.org/wiki/San\\_Felipe\\_Pueblo,\\_New\\_Mexico](https://en.wikipedia.org/wiki/San_Felipe_Pueblo,_New_Mexico) and <https://en.wikipedia.org/wiki/Puebloans> and [https://en.wikipedia.org/wiki/Keresan\\_languages](https://en.wikipedia.org/wiki/Keresan_languages)

**Also see:** Indian Pueblo Cultural Center at <https://www.indianpueblo.org/19-pueblos/pueblos/>

#### Links to additional information (search each by tribe name):

Federal Register (recent rulings and issues): <https://www.federalregister.gov/>

Native Languages: <http://www.native-languages.org>

National Indian Law Library: <http://www.narf.org/nill/tribes/>

American Philosophical Society Indigenous Subject Guide: <https://search.amphilsoc.org/natam/search>

Library of Congress: <https://www.loc.gov/>

#### Bureau of Indian Affairs (BIA) Records (Record Group 75):

To focus on BIA records in the Online Catalog, use "advanced search" and enter 75 into the Record Group field.

Although important, the BIA is only one of many Federal agencies containing important records of Native Communities. For various reasons there are often periods of time where BIA records are not available for individual tribes. Other techniques should be used for these periods, such as searching by geographic area and/or time-period and widening the search to include ALL Federal agencies.

Community records could also be "buried" in BIA agency files not described in the Online Catalog in great enough detail to be searched directly by community name. Doing an advanced search using one or two words from the BIA office name or the entire office name in quotes, along with Record Group 75, may be beneficial. Some BIA offices known to hold **San Felipe Pueblo** records follow:

1850-1874 New Mexico Superintendency, 1871-1900 Pueblo Agency, 1877-1989 Albuquerque Area Office, 1899-1935 Zuni Agency, 1911-1935 Northern Pueblos Agency, 1911-1935 Southern Pueblos Agency, 1927-1952 Phoenix Area Office, 1935-1977 United Pueblos Agency

## Pueblo of San Ildefonso, New Mexico

### Pueblo (Tewa-speaking)

To hear modern Native Community names spoken aloud, see [National Indian Law Library](#).

**Always consult the Native People themselves for most accurate information, either through their website or in person.**

**Current Community Headquarters:** [Santa Fe, New Mexico](#)

#### Citizen Archivist Catalog Tag: **NT432**

To find documents already tagged, copy and paste this tag into the [Advanced Online Catalog Search Form](#) in the "Tags" box. If documents are not tagged or you wish to contribute, see the [Citizen Archivist Program](#).

#### Personal archival assistance:

For additional help in finding records of the San Ildefonso Pueblo, email the archivists at the National Archives at Denver ([denver.archives@nara.gov](mailto:denver.archives@nara.gov)), the National Archives at Riverside ([riverside.archives@nara.gov](mailto:riverside.archives@nara.gov)), or contact the [National Archives in Washington D.C.](#) Organizations listed on the [New Mexico Native Communities](#) page may also provide research assistance.

#### Searching in the [National Archives Online Catalog](#)

Slashes (/) separate individual search strings. Copy and paste or type exactly, including quotation marks if present. Also, try using a word from each of the community's other names and locations. See associated video for more detailed instructions.

**Suggested Search Terms:** "[San Ildefonso](#)" NOT "[Master File](#)" AND NOT "[Department of State](#)" AND NOT "[Philippines](#)" / "[San Ildefonso](#)" (advanced search using [Record Group 75](#)) / "[San Ildefonso](#)" (advanced search using [Record Group 11](#)) / "[San Ildefonso](#)" (advanced search using [Record Group 435](#)) / "[Pueblo of San Ildefonso](#)"

**Related Searches:** "[Santa Fe County](#)" "[New Mexico](#)"

**This community may also have been recorded as:** [San Ildefonso Pueblo](#) / [Po-who-ge-oweenge](#) / [Po-Woh-Geh-Owingeh](#) / "[where the water cuts through](#)" / [Pueblo of San Ildefonso](#)

**Additional Resources:** The following sources may provide important background information and ideas for additional search terms.

**San Ildefonso Pueblo website:** <http://www.sanipueblo.org/>

**Wikipedia (general information only):** [https://en.wikipedia.org/wiki/San\\_Ildefonso\\_Pueblo,\\_New\\_Mexico](https://en.wikipedia.org/wiki/San_Ildefonso_Pueblo,_New_Mexico) and

[https://en.wikipedia.org/wiki/Eight\\_Northern\\_Pueblos](https://en.wikipedia.org/wiki/Eight_Northern_Pueblos) and <https://en.wikipedia.org/wiki/Puebloans> and <https://en.wikipedia.org/wiki/Tewa>

**Also see:** Very brief history at <http://www.sanipueblo.org/department-of-environmental-and-cultural-preservation.aspx> and bulletins, such as [http://www.sanipueblo.org/uploads/FileLinks/deb62ed56021487c83a3b3e47ce05a8c/Bulletin\\_for\\_May.pdf](http://www.sanipueblo.org/uploads/FileLinks/deb62ed56021487c83a3b3e47ce05a8c/Bulletin_for_May.pdf) for glimpse into every day life at the Pueblo. Also the Indian Pueblo Cultural Center at <https://www.indianpueblo.org/19-pueblos/pueblos/>

**Links to additional information (search each by tribe name):**

Federal Register (recent rulings and issues): <https://www.federalregister.gov/>

Native Languages: <http://www.native-languages.org>

National Indian Law Library: <http://www.narf.org/nill/tribes/>

American Philosophical Society Indigenous Subject Guide: <https://search.amphilsoc.org/natam/search>

Library of Congress: <https://www.loc.gov/>

#### **Bureau of Indian Affairs (BIA) Records (Record Group 75):**

To focus on BIA records in the Online Catalog, use "advanced search" and enter 75 into the Record Group field.

Although important, the BIA is only one of many Federal agencies containing important records of Native Communities. For various reasons there are often periods of time where BIA records are not available for individual tribes. Other techniques should be used for these periods, such as searching by geographic area and/or time-period and widening the search to include ALL Federal agencies.

Community records could also be "buried" in BIA agency files not described in the Online Catalog in great enough detail to be searched directly by community name. Doing an advanced search using one or two words from the BIA office name or the entire office name in quotes, along with Record Group 75, may be beneficial. Some BIA offices known to hold **San Ildefonso Pueblo** records follow:

1850-1874 New Mexico Superintendency, 1871-1900 Pueblo Agency, 1877-1989 Albuquerque Area Office, 1899-1935 Zuni Agency, 1911-1935 Northern Pueblos Agency, 1911-1935 Southern Pueblos Agency, 1927-1952 Phoenix Area Office, 1935-1977 United Pueblos Agency

Suggested web-links outside the National Archives website are provided for informational purposes only and do not imply endorsement of any organization or program by the National Archives and Records Administration.

National Archives Native Communities Research Guides. <https://www.archives.gov/education/native-communities>

## Pueblo of Santa Ana, New Mexico

### Pueblo (Eastern Keres speaking)

To hear modern Native Community names spoken aloud, see [National Indian Law Library](#).

**Always consult the Native People themselves for most accurate information, either through their website or in person.**

**Current Community Headquarters:** **Santa Ana Pueblo, New Mexico**

#### Citizen Archivist Catalog Tag: **NT430**

To find documents already tagged, copy and paste this tag into the [Advanced Online Catalog Search Form](#) in the "Tags" box. If documents are not tagged or you wish to contribute, see the [Citizen Archivist Program](#).

#### Personal archival assistance:

For additional help in finding records of the Santa Ana Pueblo, email the archivists at the National Archives at Denver ([denver.archives@nara.gov](mailto:denver.archives@nara.gov)), the National Archives at Riverside ([riverside.archives@nara.gov](mailto:riverside.archives@nara.gov)), or contact the [National Archives in Washington D.C.](#) Organizations listed on the [New Mexico Native Communities](#) page may also provide research assistance.

#### Searching in the [National Archives Online Catalog](#)

Slashes (/) separate individual search strings. Copy and paste or type exactly, including quotation marks if present. Also, try using a word from each of the community's other names and locations. See associated video for more detailed instructions.

**Suggested Search Terms: "Santa Ana Pueblo" NOT "Master File" / Pueblo "Santa Ana" (advanced search using Record Group 11) / Pueblo "Santa Ana" (advanced search using Record Group 75)**

**Related Searches: "Sandoval County" "New Mexico"**

**This community may also have been recorded as: Santa Ana Pueblo / Tamaya / Tamaiya / Pueblo of Santa Ana**

**Additional Resources:** The following sources may provide important background information and ideas for additional search terms.

**Santa Ana Pueblo** website: <http://www.santaana-nsn.gov> and <http://www.santaana.org/>  
**Wikipedia (general information only):** [https://en.wikipedia.org/wiki/Santa\\_Ana\\_Pueblo,\\_New\\_Mexico](https://en.wikipedia.org/wiki/Santa_Ana_Pueblo,_New_Mexico) and <https://en.wikipedia.org/wiki/Puebloans> and [https://en.wikipedia.org/wiki/Keresan\\_languages](https://en.wikipedia.org/wiki/Keresan_languages)

**Also see:** Calendar at <http://www.santaana.org/calendar.htm> and the Indian Pueblo Cultural Center at <https://www.indianpueblo.org/19-pueblos/pueblos/>

#### Links to additional information (search each by tribe name):

Federal Register (recent rulings and issues): <https://www.federalregister.gov/>

Native Languages: <http://www.native-languages.org>

National Indian Law Library: <http://www.narf.org/nill/tribes/>

American Philosophical Society Indigenous Subject Guide: <https://search.amphilsoc.org/natam/search>

Library of Congress: <https://www.loc.gov/>

#### Bureau of Indian Affairs (BIA) Records (Record Group 75):

To focus on BIA records in the Online Catalog, use "advanced search" and enter 75 into the Record Group field.

Although important, the BIA is only one of many Federal agencies containing important records of Native Communities. For various reasons there are often periods of time where BIA records are not available for individual tribes. Other techniques should be used for these periods, such as searching by geographic area and/or time-period and widening the search to include ALL Federal agencies.

Community records could also be "buried" in BIA agency files not described in the Online Catalog in great enough detail to be searched directly by community name. Doing an advanced search using one or two words from the BIA office name or the entire office name in quotes, along with Record Group 75, may be beneficial. Some BIA offices known to hold **Santa Ana Pueblo** records follow:

1850-1874 New Mexico Superintendency, 1871-1900 Pueblo Agency, 1877-1989 Albuquerque Area Office, 1899-1935 Zuni Agency, 1911-1935 Northern Pueblos Agency, 1911-1935 Southern Pueblos Agency, 1927-1952 Phoenix Area Office, 1935-1977 United Pueblos Agency

## Pueblo of Santa Clara, New Mexico

### Pueblo (Tewa-speaking)

To hear modern Native Community names spoken aloud, see [National Indian Law Library](#).

**Always consult the Native People themselves for most accurate information, either through their website or in person.**

**Current Community Headquarters:** **Espanola, New Mexico**

#### Citizen Archivist Catalog Tag: **NT424**

To find documents already tagged, copy and paste this tag into the [Advanced Online Catalog Search Form](#) in the "Tags" box. If documents are not tagged or you wish to contribute, see the [Citizen Archivist Program](#).

#### Personal archival assistance:

For additional help in finding records of the Santa Clara Pueblo, email the archivists at the National Archives at Denver (denver.archives@nara.gov), the National Archives at Riverside (riverside.archives@nara.gov), or contact the [National Archives in Washington D.C.](#) Organizations listed on the [New Mexico Native Communities](#) page may also provide research assistance.

#### Searching in the [National Archives Online Catalog](#)

Slashes (/) separate individual search strings. Copy and paste or type exactly, including quotation marks if present. Also, try using a word from each of the community's other names and locations. See associated video for more detailed instructions.

**Suggested Search Terms: "Santa Clara Pueblo" NOT "Master File" / Pueblo "Santa Clara" (advanced search using Record Group 75)**

**Related Searches: "Rio Arriba County" "New Mexico" / "Santa Fe County" "New Mexico" / "Sandoval County" "New Mexico"**

**This community may also have been recorded as: Santa Clara Pueblo / Kha'p'oo Owingeh / Kha'po Owingeh / Pueblo of Santa Clara**

**Additional Resources:** The following sources may provide important background information and ideas for additional search terms.

**Santa Clara Pueblo** website: None found

**Wikipedia (general information only):** [https://en.wikipedia.org/wiki/Santa\\_Clara\\_Pueblo,\\_New\\_Mexico](https://en.wikipedia.org/wiki/Santa_Clara_Pueblo,_New_Mexico) and [https://en.wikipedia.org/wiki/Eight\\_Northern\\_Pueblos](https://en.wikipedia.org/wiki/Eight_Northern_Pueblos) and <https://en.wikipedia.org/wiki/Puebloans> and <https://en.wikipedia.org/wiki/Tewa>  
**Also see:** Puye Cliff Dwellings website at <http://www.puyeciiffs.com/> and the Indian Pueblo Cultural Center at <https://www.indianpueblo.org/19-pueblos/pueblos/>

#### Links to additional information (search each by tribe name):

Federal Register (recent rulings and issues): <https://www.federalregister.gov/>

Native Languages: <http://www.native-languages.org>

National Indian Law Library: <http://www.narf.org/nill/tribes/>

American Philosophical Society Indigenous Subject Guide: <https://search.amphilsoc.org/natam/search>

Library of Congress: <https://www.loc.gov/>

#### Bureau of Indian Affairs (BIA) Records (Record Group 75):

To focus on BIA records in the Online Catalog, use "advanced search" and enter 75 into the Record Group field.

Although important, the BIA is only one of many Federal agencies containing important records of Native Communities. For various reasons there are often periods of time where BIA records are not available for individual tribes. Other techniques should be used for these periods, such as searching by geographic area and/or time-period and widening the search to include ALL Federal agencies.

Community records could also be "buried" in BIA agency files not described in the Online Catalog in great enough detail to be searched directly by community name. Doing an advanced search using one or two words from the BIA office name or the entire office name in quotes, along with Record Group 75, may be beneficial. Some BIA offices known to hold **Santa Clara Pueblo** records follow:

1850-1874 New Mexico Superintendency, 1871-1900 Pueblo Agency, 1877-1989 Albuquerque Area Office, 1899-1935 Zuni Agency, 1911-1935 Northern Pueblos Agency, 1911-1935 Southern Pueblos Agency, 1927-1952 Phoenix Area Office, 1935-1977 United Pueblos Agency

Suggested web-links outside the National Archives website are provided for informational purposes only and do not imply endorsement of any organization or program by the National Archives and Records Administration.

National Archives Native Communities Research Guides. <https://www.archives.gov/education/native-communities>

# Pueblo of Taos, New Mexico

## Pueblo (Northern Tiwa-speaking)

To hear modern Native Community names spoken aloud, see [National Indian Law Library](#).

**Always consult the Native People themselves for most accurate information, either through their website or in person.**

**Current Community Headquarters:** **Taos, New Mexico**

### Citizen Archivist Catalog Tag: **NT429**

To find documents already tagged, copy and paste this tag into the [Advanced Online Catalog Search Form](#) in the "Tags" box. If documents are not tagged or you wish to contribute, see the [Citizen Archivist Program](#).

### Personal archival assistance:

For additional help in finding records of the Taos Pueblo, email the archivists at the National Archives at Denver ([denver.archives@nara.gov](mailto:denver.archives@nara.gov)), the National Archives at Riverside ([riverside.archives@nara.gov](mailto:riverside.archives@nara.gov)), or contact the [National Archives in Washington D.C.](#) Organizations listed on the [New Mexico Native Communities](#) page may also provide research assistance.

### Searching in the [National Archives Online Catalog](#)

Slashes (/) separate individual search strings. Copy and paste or type exactly, including quotation marks if present. Also, try using a word from each of the community's other names and locations. See associated video for more detailed instructions.

**Suggested Search Terms:** **"Taos Pueblo" / "Pueblo of Taos" / Taos Indian "New Mexico" NOT Commerce AND NOT Labor AND NOT Transportation / Taos (advanced search using Record Group 75)**

**Related Searches:** **"Taos County" "New Mexico"**

**This community may also have been recorded as:** **Taos Pueblo / Taos / Tuah-Tah / Pueblo de Taos / ʔaʔopháymup'ðhóothòlbo ("at red willow canyon mouth") / Pueblo of Taos**

**Additional Resources:** The following sources may provide important background information and ideas for additional search terms.

**Taos Pueblo** website: <http://taospueblo.com/>

**Wikipedia (general information only):** [https://en.wikipedia.org/wiki/Taos\\_Pueblo](https://en.wikipedia.org/wiki/Taos_Pueblo) and [https://en.wikipedia.org/wiki/Eight\\_Northern\\_Pueblos](https://en.wikipedia.org/wiki/Eight_Northern_Pueblos) and <https://en.wikipedia.org/wiki/Puebloans> and [https://en.wikipedia.org/wiki/Tiwa\\_languages](https://en.wikipedia.org/wiki/Tiwa_languages)

**Also see:** Q & A page at <http://taospueblo.com/about/>, several videos about the Pueblo at <http://taospueblo.com/blog/> and the Indian Pueblo Cultural Center at <https://www.indianpueblo.org/19-pueblos/pueblos/>

**Links to additional information (search each by tribe name):**

Federal Register (recent rulings and issues): <https://www.federalregister.gov/>

Native Languages: <http://www.native-languages.org>

National Indian Law Library: <http://www.narf.org/nill/tribes/>

American Philosophical Society Indigenous Subject Guide: <https://search.amphilsoc.org/natam/search>

Library of Congress: <https://www.loc.gov/>

### Bureau of Indian Affairs (BIA) Records (Record Group 75):

To focus on BIA records in the Online Catalog, use "advanced search" and enter 75 into the Record Group field.

Although important, the BIA is only one of many Federal agencies containing important records of Native Communities. For various reasons there are often periods of time where BIA records are not available for individual tribes. Other techniques should be used for these periods, such as searching by geographic area and/or time-period and widening the search to include ALL Federal agencies.

Community records could also be "buried" in BIA agency files not described in the Online Catalog in great enough detail to be searched directly by community name. Doing an advanced search using one or two words from the BIA office name or the entire office name in quotes, along with Record Group 75, may be beneficial. Some BIA offices known to hold **Taos Pueblo** records follow:

1850-1874 New Mexico Superintendency, 1871-1900 Pueblo Agency, 1877-1989 Albuquerque Area Office, 1899-1935 Zuni Agency, 1911-1935 Northern Pueblos Agency, 1911-1935 Southern Pueblos Agency, 1927-1952 Phoenix Area Office, 1935-1977 United Pueblos Agency



## Pueblo of Tesuque, New Mexico

### Pueblo (Tewa-speaking)

To hear modern Native Community names spoken aloud, see [National Indian Law Library](#).

**Always consult the Native People themselves for most accurate information, either through their website or in person.**

**Current Community Headquarters:** **Santa Fe, New Mexico**

#### Citizen Archivist Catalog Tag: **NT441**

To find documents already tagged, copy and paste this tag into the [Advanced Online Catalog Search Form](#) in the "Tags" box. If documents are not tagged or you wish to contribute, see the [Citizen Archivist Program](#).

#### Personal archival assistance:

For additional help in finding records of the Tesuque Pueblo, email the archivists at the National Archives at Denver ([denver.archives@nara.gov](mailto:denver.archives@nara.gov)), the National Archives at Riverside ([riverside.archives@nara.gov](mailto:riverside.archives@nara.gov)), or contact the [National Archives in Washington D.C.](#) Organizations listed on the [New Mexico Native Communities](#) page may also provide research assistance.

#### Searching in the [National Archives Online Catalog](#)

Slashes (/) separate individual search strings. Copy and paste or type exactly, including quotation marks if present. Also, try using a word from each of the community's other names and locations. See associated video for more detailed instructions.

**Suggested Search Terms:** **"Tesuque Pueblo" / Tesuque NOT "Master File" AND NOT "Sample File" / Tesuque (advanced search using Record Group 75) / Tesuque (advanced search using Record Group 435)**

**Related Searches:** **"Santa Fe County" "New Mexico"**

**This community may also have been recorded as:**  
**Tesuque Pueblo / Tet-Sugeh / Tetsuge Owingeh / Pueblo of Tesuque**

**Additional Resources:** The following sources may provide important background information and ideas for additional search terms.

Tesuque Pueblo website: None found

**Wikipedia (general information only):** [https://en.wikipedia.org/wiki/Tesuque,\\_New\\_Mexico](https://en.wikipedia.org/wiki/Tesuque,_New_Mexico) and [https://en.wikipedia.org/wiki/Eight\\_Northern\\_Pueblos](https://en.wikipedia.org/wiki/Eight_Northern_Pueblos) and <https://en.wikipedia.org/wiki/Pueblos> and <https://en.wikipedia.org/wiki/Tewa>

**Also see:** The Indian Pueblo Cultural Center at <https://www.indianpueblo.org/19-pueblos/pueblos/>

#### Links to additional information (search each by tribe name):

Federal Register (recent rulings and issues): <https://www.federalregister.gov/>

Native Languages: <http://www.native-languages.org>

National Indian Law Library: <http://www.narf.org/nill/tribes/>

American Philosophical Society Indigenous Subject Guide: <https://search.amphilsoc.org/natam/search>

Library of Congress: <https://www.loc.gov/>

#### Bureau of Indian Affairs (BIA) Records (Record Group 75):

To focus on BIA records in the Online Catalog, use "advanced search" and enter 75 into the Record Group field.

Although important, the BIA is only one of many Federal agencies containing important records of Native Communities. For various reasons there are often periods of time where BIA records are not available for individual tribes. Other techniques should be used for these periods, such as searching by geographic area and/or time-period and widening the search to include ALL Federal agencies.

Community records could also be "buried" in BIA agency files not described in the Online Catalog in great enough detail to be searched directly by community name. Doing an advanced search using one or two words from the BIA office name or the entire office name in quotes, along with Record Group 75, may be beneficial. Some BIA offices known to hold **Tesuque Pueblo** records follow:

1850-1874 New Mexico Superintendency, 1871-1900 Pueblo Agency, 1877-1989 Albuquerque Area Office, 1899-1935 Zuni Agency, 1911-1935 Northern Pueblos Agency, 1911-1935 Southern Pueblos Agency, 1927-1952 Phoenix Area Office, 1935-1977 United Pueblos Agency

## Pueblo of Zia, New Mexico

### Pueblo (Eastern Keres-speaking)

To hear modern Native Community names spoken aloud, see [National Indian Law Library](#).

**Always consult the Native People themselves for most accurate information, either through their website or in person.**

**Current Community Headquarters:** [Zia Pueblo, New Mexico](#)

#### Citizen Archivist Catalog Tag: **NT427**

To find documents already tagged, copy and paste this tag into the [Advanced Online Catalog Search Form](#) in the "Tags" box. If documents are not tagged or you wish to contribute, see the [Citizen Archivist Program](#).

#### Personal archival assistance:

For additional help in finding records of the Zia Pueblo, email the archivists at the National Archives at Denver ([denver.archives@nara.gov](mailto:denver.archives@nara.gov)), the National Archives at Riverside ([riverside.archives@nara.gov](mailto:riverside.archives@nara.gov)), or contact the [National Archives in Washington D.C.](#) Organizations listed on the [New Mexico Native Communities](#) page may also provide research assistance.

#### Searching in the [National Archives Online Catalog](#)

Slashes (/) separate individual search strings. Copy and paste or type exactly, including quotation marks if present. Also, try using a word from each of the community's other names and locations. See associated video for more detailed instructions.

**Suggested Search Terms:** "[Zia Pueblo](#)" / [Zia](#) (advanced search using Record Group 75) / [Zia](#) (advanced search using Record Group 11)

**Related Searches:** "[Sandoval County](#)" "[New Mexico](#)"

**This community may also have been recorded as:** [Zia Pueblo](#) / [Tsi-ya](#) / [Tsi'ya](#) / [Pueblo de Zia](#) / [Pueblo of Zia](#)

**Additional Resources:** The following sources may provide important background information and ideas for additional search terms.

Zia Pueblo website: [http://zia.com/home/zia\\_info.html](http://zia.com/home/zia_info.html)

Wikipedia (general information only): [https://en.wikipedia.org/wiki/Zia\\_Pueblo,\\_New\\_Mexico](https://en.wikipedia.org/wiki/Zia_Pueblo,_New_Mexico) and <https://en.wikipedia.org/wiki/Pueblos> and [https://en.wikipedia.org/wiki/Keresan\\_languages](https://en.wikipedia.org/wiki/Keresan_languages)

Also see: The Indian Pueblo Cultural Center at <https://www.indianpueblo.org/19-pueblos/pueblos/>

#### Links to additional information (search each by tribe name):

Federal Register (recent rulings and issues): <https://www.federalregister.gov/>

Native Languages: <http://www.native-languages.org>

National Indian Law Library: <http://www.narf.org/nill/tribes/>

American Philosophical Society Indigenous Subject Guide: <https://search.amphilsoc.org/natam/search>

Library of Congress: <https://www.loc.gov/>

#### Bureau of Indian Affairs (BIA) Records (Record Group 75):

To focus on BIA records in the Online Catalog, use "advanced search" and enter 75 into the Record Group field.

Although important, the BIA is only one of many Federal agencies containing important records of Native Communities. For various reasons there are often periods of time where BIA records are not available for individual tribes. Other techniques should be used for these periods, such as searching by geographic area and/or time-period and widening the search to include ALL Federal agencies.

Community records could also be "buried" in BIA agency files not described in the Online Catalog in great enough detail to be searched directly by community name. Doing an advanced search using one or two words from the BIA office name or the entire office name in quotes, along with Record Group 75, may be beneficial. Some BIA offices known to hold **Zia Pueblo** records follow:

1850-1874 New Mexico Superintendency, 1871-1900 Pueblo Agency, 1877-1989 Albuquerque Area Office, 1899-1935 Zuni Agency, 1911-1935 Northern Pueblos Agency, 1911-1935 Southern Pueblos Agency, 1927-1952 Phoenix Area Office, 1935-1977 United Pueblos Agency

## Ute Mountain Ute Tribe

### Southern Ute (Weeminuche Band)

To hear modern Native Community names spoken aloud, see [National Indian Law Library](#).

**Always consult the Native People themselves for most accurate information, either through their website or in person.**

**Current Community Headquarters:** **Towaoc, Colorado**

#### Citizen Archivist Catalog Tag: **NT361a**

To find documents already tagged, copy and paste this tag into the [Advanced Online Catalog Search Form](#) in the "Tags" box. If documents are not tagged or you wish to contribute, see the [Citizen Archivist Program](#).

#### Personal archival assistance:

For additional help in finding records of the Ute Mountain Community, email the archivists at the National Archives at Denver ([denver.archives@nara.gov](mailto:denver.archives@nara.gov)), the National Archives at Riverside ([riverside.archives@nara.gov](mailto:riverside.archives@nara.gov)), or contact the [National Archives in Washington D.C.](#) Organizations listed on the [New Mexico Native Communities](#) page may also provide research assistance.

#### Searching in the [National Archives Online Catalog](#)

Slashes (/) separate individual search strings. Copy and paste or type exactly, including quotation marks if present. Also, try using a word from each of the community's other names and locations. See associated video for more detailed instructions.

**Suggested Search Terms:** **"Ute Mountain" Indian NOT "Master File" / Weeminuche**

**Related Searches:** **"Montezuma County" Colorado / "La Plata County" Colorado / "San Juan County" "New Mexico" / "San Juan County" Utah**

**This community may also have been recorded as:** **Ute Mountain Tribe of the Ute Mountain Reservation, Colorado, New Mexico & Utah / Weeminuche Band of Ute / Ute Mountain Ute / Weeminuche / Ute Mountain Reservation**

**Additional Resources:** The following sources may provide important background information and ideas for additional search terms.

**Ute Mountain Ute** website: <http://www.utemountainutetribe.com/>

**Wikipedia (general information only):** [https://en.wikipedia.org/wiki/Ute\\_Mountain\\_Ute\\_Tribe](https://en.wikipedia.org/wiki/Ute_Mountain_Ute_Tribe) and [https://en.wikipedia.org/wiki/Ute\\_people](https://en.wikipedia.org/wiki/Ute_people)

**Also see:** Chronology at <http://www.utemountainutetribe.com/culturechronology.html>

**Links to additional Information (search each by tribe name):**

Federal Register (recent rulings and issues): <https://www.federalregister.gov/>

Native Languages: <http://www.native-languages.org>

National Indian Law Library: <http://www.narf.org/nill/tribes/>

American Philosophical Society Indigenous Subject Guide: <https://search.amphilsoc.org/natam/search>

Library of Congress: <https://www.loc.gov/>

#### **Bureau of Indian Affairs (BIA) Records (Record Group 75):**

To focus on BIA records in the Online Catalog, use "advanced search" and enter 75 into the Record Group field.

Although important, the BIA is only one of many Federal agencies containing important records of Native Communities. For various reasons there are often periods of time where BIA records are not available for individual tribes. Other techniques should be used for these periods, such as searching by geographic area and/or time-period and widening the search to include ALL Federal agencies.

Community records could also be "buried" in BIA agency files not described in the Online Catalog in great enough detail to be searched directly by community name. Doing an advanced search using one or two words from the BIA office name or the entire office name in quotes, along with Record Group 75, may be beneficial. Some BIA offices known to hold **Ute Mountain Ute** records follow:

1861-1870 Colorado Superintendency, 1877-1989 Albuquerque Area Office, 1878-1970 Consolidated Ute Agency, 1927-1952 Phoenix Area Office

## Zuni Tribe of the Zuni Reservation, New Mexico

### Zuni Pueblo

To hear modern Native Community names spoken aloud, see [National Indian Law Library](#).

**Always consult the Native People themselves for most accurate information, either through their website or in person.**

**Current Community Headquarters:** **Zuni, New Mexico**

#### Citizen Archivist Catalog Tag: **NT423**

To find documents already tagged, copy and paste this tag into the [Advanced Online Catalog Search Form](#) in the "Tags" box. If documents are not tagged or you wish to contribute, see the [Citizen Archivist Program](#).

#### Personal archival assistance:

For additional help in finding records of the Zuni Community, email the archivists at the National Archives at Denver ([denver.archives@nara.gov](mailto:denver.archives@nara.gov)) or contact the [National Archives in Washington D.C.](#) Organizations listed on the [New Mexico Native Communities](#) page may also provide research assistance.

#### Searching in the [National Archives Online Catalog](#)

Slashes (/) separate individual search strings. Copy and paste or type exactly, including quotation marks if present. Also, try using a word from each of the community's other names and locations. See associated video for more detailed instructions.

**Suggested Search Terms:** **"Zuni Pueblo" / Zuni (advanced search using Record Group 75) / Zuni (advanced search using Record Group 11)**

**Related Searches:** **"McKinley County" "New Mexico" / "Valencia County" "New Mexico" / "Catron County" "New Mexico" / "Apache County" Arizona**

**This community may also have been recorded as:** **Zuni Pueblo / Zuni / A:shiwi / She-We-Na / Zuñi / Zuni Reservation**

**Additional Resources:** The following sources may provide important background information and ideas for additional search terms.

Zuni website: <http://www.ashiwi.org>

**Wikipedia (general information only):** <https://en.wikipedia.org/wiki/Zuni> and <https://en.wikipedia.org/wiki/Puebloans> and [https://en.wikipedia.org/wiki/Zuni\\_language](https://en.wikipedia.org/wiki/Zuni_language)

**Also see:** The A:shwi A:wan Museum and Heritage Center at <http://ashiwi-museum.org/>, the Inter-tribal Council of Arizona at [http://itcaonline.com/?page\\_id=1171](http://itcaonline.com/?page_id=1171) and the Indian Pueblo Cultural Center at <https://www.indianpueblo.org/19-pueblos/pueblos/>

**Links to additional information (search each by tribe name):**

Federal Register (recent rulings and issues): <https://www.federalregister.gov/>

Native Languages: <http://www.native-languages.org>

National Indian Law Library: <http://www.narf.org/nill/tribes/>

American Philosophical Society Indigenous Subject Guide: <https://search.amphilsoc.org/natam/search>

Library of Congress: <https://www.loc.gov/>

#### Bureau of Indian Affairs (BIA) Records (Record Group 75):

To focus on BIA records in the Online Catalog, use "advanced search" and enter 75 into the Record Group field.

Although important, the BIA is only one of many Federal agencies containing important records of Native Communities. For various reasons there are often periods of time where BIA records are not available for individual tribes. Other techniques should be used for these periods, such as searching by geographic area and/or time-period and widening the search to include ALL Federal agencies.

Community records could also be "buried" in BIA agency files not described in the Online Catalog in great enough detail to be searched directly by community name. Doing an advanced search using one or two words from the BIA office name or the entire office name in quotes, along with Record Group 75, may be beneficial. Some BIA offices known to hold **Zuni** records follow:

1849 - (Main) Bureau of Indian Affairs, 1889-1935 Santa Fe Indian School, 1902-1935 Zuni Agency, 1931-1940 Health Division, 1952-1966 Gallup Area Office, 1966-1999 Albuquerque Area Office

# Texas Native Communities

To perform a simple search of the **GENERAL** records of Texas's Native People in the [National Archives Online Catalog](#), use the search term **Pueblo Texas** (advanced search using Record Group 75). All other general searches are unproductive. Try using individual tribal names listed in the following sections.

There are several great resources available for general information and material for kids about the Native People of Texas, such as the [Native Languages](#) and [National Museum of the American Indian](#) websites. Type **Texas** into the main search box for both.

Related state agencies and universities may also hold records or information about these communities. Examples might include the [Texas State Library and Archives](#), the [Bullock Museum Interactive Texas Map](#), and the [Texas Historical Association Teacher page](#).

---

## Historic Texas Native Communities

---

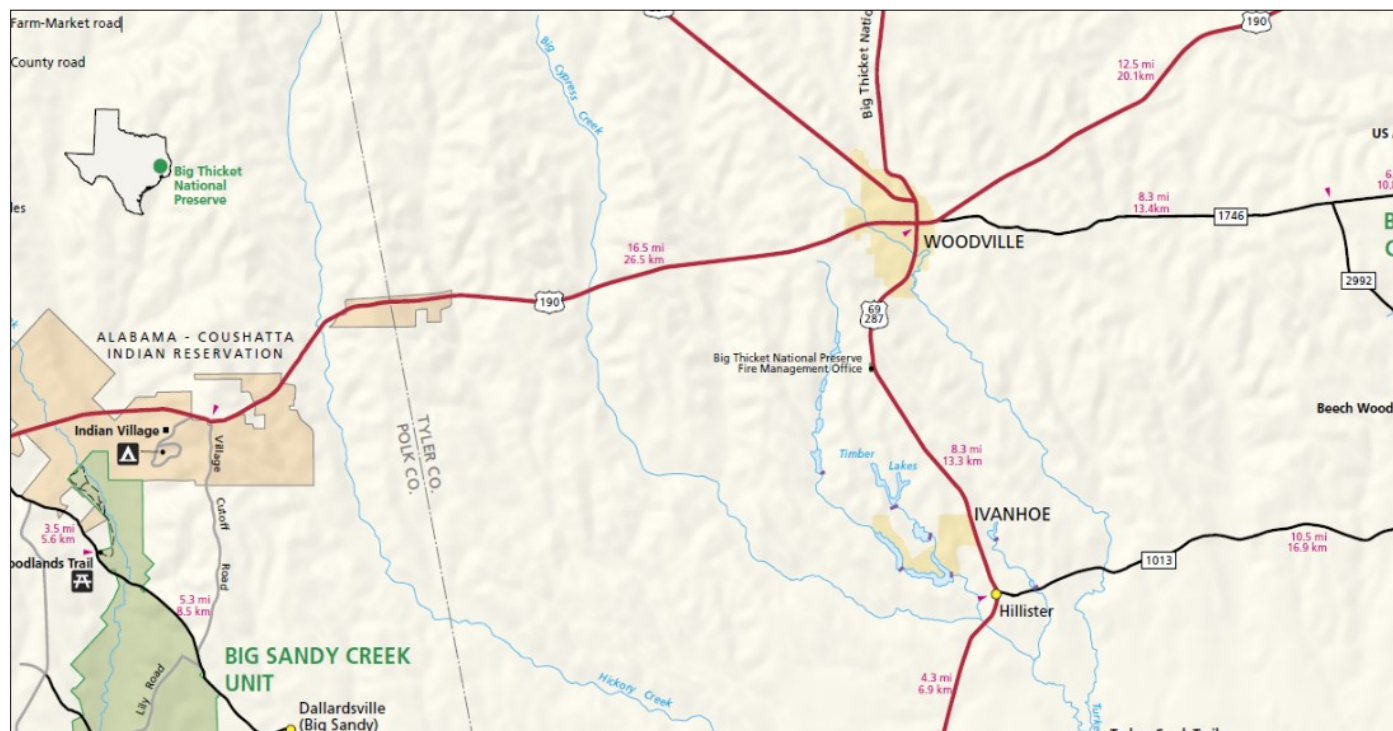
### Federally Recognized Native Communities in Texas (2018)

[Alabama-Coushatta Tribe of Texas](#)

[Kickapoo Traditional Tribe of Texas](#)

[Ysleta del Sur Pueblo](#)

### Sample Document



Close-up detail of area surrounding the Alabama-Coushatta Indian Reservation, Texas from the National Park Service, Big Thicket

# Historic Texas Native Communities

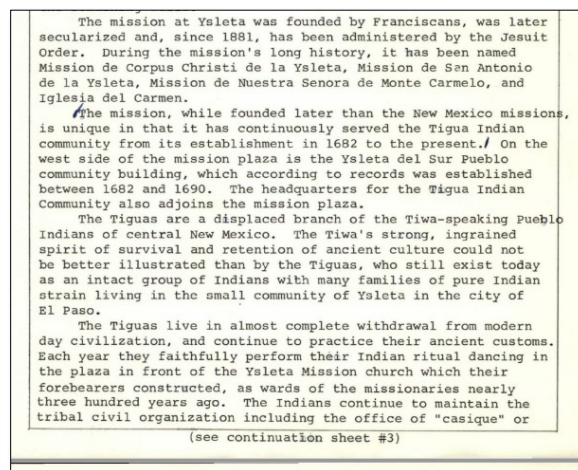
For a map of historic language areas in Texas, see [Native Languages](#).

**Instructions:** Slashes separate search terms and phrases. **Copy and paste exact phrase** into the [Online Catalog](#), including quotation marks, if present. Always be willing to experiment with search terms. Quoted phrases return very different results than non-quoted phrases. Using the geographic location or most relevant word(s) from the tribal name with one of the following words may also prove beneficial: **Indian** (most useful), **Native**, **Tribe**, **Reservation**, or **Village**. Be sure to link to modern tribal pages. They contain current information and more possible search terms.

Historic Tribes	Suggested Online Catalog Search Terms	Associated Federally Recognized Tribal Communities 2018
Bidai	Bidai	Probably absorbed into the Atakapa and Caddo Nations.
Caddo	Caddo Indian / Caddo Tribe	Oklahoma: <ul style="list-style-type: none"> <li>Caddo Nation of Oklahoma (<a href="#">See Home Page - Central Plains</a>)</li> </ul>
Coahuiltecan	Coahuiltecan	Survivors were absorbed into other indigenous communities in Texas and Mexico. Catalog records are related to archaeological and historical sites.
Comanche	"Comanche Nation" / Comanche Indian NOT Defense AND NOT County	Oklahoma: <ul style="list-style-type: none"> <li>Comanche Nation, Oklahoma (<a href="#">See Home Page - Central Plains</a>)</li> </ul>
Jicarilla Apache	Jicarilla Apache / Jicarilla Indian NOT Housing	New Mexico: <ul style="list-style-type: none"> <li>Jicarilla Apache Nation, New Mexico</li> </ul>
Jumano	Jumano	Catalog records refer to historic tribe. There is a group of Apache-Jumano living in Texas, not recognized by the Federal government.
Karankawa	Karankawa	Catalog records refer to historic tribe. Sometimes individual bands of Capoque (Coco), Kohani, Kopane, Kronk, and Karankawa (Carancaquaca) were referred to collectively as Karankawa.
Kiowa	"Kiowa Indian"	Oklahoma: <ul style="list-style-type: none"> <li>Kiowa Indian Tribe of Oklahoma (<a href="#">See Home Page - Central Plains</a>)</li> </ul>
Kitsai	"Wichita Indian" / "Wichita and Affiliated"	Oklahoma: <ul style="list-style-type: none"> <li>Wichita and Affiliated Tribes (Wichita, Keechi, Waco &amp; Tawakonie), Oklahoma (<a href="#">See Home Page - Central Plains</a>)</li> </ul>
Mescalero Apache	Mescalero Apache	New Mexico: <ul style="list-style-type: none"> <li><a href="#">Mescalero Apache Tribe of the Mescalero Reservation, New Mexico</a></li> </ul>
Piro	"Piro Indian" / "Pueblo of San Juan Guadalupe"	Not recognized by the Federal Government and no longer exist as a distinct tribal group. Associated with an archaeological excavation near Socoro, New Mexico. One group claiming descendency is currently seeking Federal Government recognition.
Pueblo	"Pueblo Indian" / Hopi Indian / Acoma Pueblo / Cochiti Pueblo / Jemez Pueblo / Isleta Pueblo / etc.	Arizona: <ul style="list-style-type: none"> <li><a href="#">Hopi Tribe of Arizona</a></li> </ul> New Mexico: <ul style="list-style-type: none"> <li><a href="#">Kewa Pueblo, New Mexico</a></li> <li><a href="#">Ohkay Owingeh, New Mexico</a></li> <li><a href="#">Pueblo of Acoma, New Mexico</a></li> </ul>

Historic Tribes	Suggested Online Catalog Search Terms	Associated Federally Recognized Tribal Communities 2018
		<ul style="list-style-type: none"> <li>• Pueblo of Cochiti, New Mexico</li> <li>• Pueblo of Isleta, New Mexico</li> <li>• Pueblo of Jemez, New Mexico</li> <li>• Pueblo of Laguna, New Mexico</li> <li>• Pueblo of Nambe, New Mexico</li> <li>• Pueblo of Picuris, New Mexico</li> <li>• Pueblo of Pojoaque, New Mexico</li> <li>• Pueblo of San Felipe, New Mexico</li> <li>• Pueblo of San Ildefonso, New Mexico</li> <li>• Pueblo of Sandia, New Mexico</li> <li>• Pueblo of Santa Ana, New Mexico</li> <li>• Pueblo of Santa Clara, New Mexico</li> <li>• Pueblo of Taos, New Mexico</li> <li>• Pueblo of Tesuque, New Mexico</li> <li>• Pueblo of Zia, New Mexico</li> <li>• Zuni Tribe of the Zuni Reservation, New Mexico</li> </ul> <p>Texas:</p> <ul style="list-style-type: none"> <li>• Ysleta del Sur Pueblo</li> </ul>
Suma	No Federal Government records are available.	Also known as Zuma and Zumana.
Tawakoni	Wichita Indian	<p>Oklahoma:</p> <ul style="list-style-type: none"> <li>• Wichita and Affiliated Tribes (Wichita, Keechi, Waco &amp; Tawakonie), Oklahoma (See Home Page for Central Plains)</li> </ul>
Tonkawa	Tonkawa	<p>Oklahoma:</p> <ul style="list-style-type: none"> <li>• Tonkawa Tribe of Indians of Oklahoma (See Home Page for Central Plains)</li> </ul>
Wichita	"Wichita Indian"	<p>Oklahoma:</p> <ul style="list-style-type: none"> <li>• Wichita and Affiliated Tribes (Wichita, Keechi, Waco &amp; Tawakonie), Oklahoma (See Home Page for Central Plains)</li> </ul>

## Sample Document



A few paragraphs from the Historic Landmark Nomination form for Ysleta Mission, Texas. National Archives. For entire document see: <https://catalog.archives.gov/id/40971835>

## Alabama-Coushatta Tribe of Texas

### Alabama and Koasati (Coushatta, Quassarte)

To hear modern Native Community names spoken aloud, see [National Indian Law Library](#).

**Always consult the Native People themselves for most accurate information, either through their website or in person.**

**Current Community Headquarters:** [Livingston, Texas](#)

#### Citizen Archivist Catalog Tag: **NT534**

To find documents already tagged, copy and paste this tag into the [Advanced Online Catalog Search Form](#) in the "Tags" box. If documents are not tagged or you wish to contribute, see the [Citizen Archivist Program](#).

#### Personal archival assistance:

For additional help in finding records of the Alabama-Coushatta, email the archivists at the National Archives at Fort Worth ([fortworth.archives@nara.gov](mailto:fortworth.archives@nara.gov)) or contact the [National Archives in Washington D.C.](#) Organizations listed on the [Texas Native Communities](#) page may also provide research assistance.

#### Searching in the [National Archives Online Catalog](#)

Slashes (/) separate individual search strings. Copy and paste or type exactly, including quotation marks if present. Also, try using a word from each of the community's other names and locations. See associated video for more detailed instructions.

**Suggested Search Terms: "Alabama Coushatta" / Alabama-Coushatta NOT Defense AND NOT "Federal Reserve" AND NOT Treasury**

**Related Searches: "Polk County" Texas**

**This community may also have been recorded as: Alabama Coushatta / Alabama-Coushatta / Alabama-Coushatta Tribes of Texas / Alabama / Koasati (Coushatta, Quassarte) / Alabama-Coushatta Indian Reservation**

---

**Additional Resources:** The following sources may provide important background information and ideas for additional search terms.

Alabama-Coushatta website: <http://www.alabama-coushatta.com/>

Wikipedia (general information only): [https://en.wikipedia.org/wiki/Alabama-Coushatta\\_Tribe\\_of\\_Texas](https://en.wikipedia.org/wiki/Alabama-Coushatta_Tribe_of_Texas) and [https://en.wikipedia.org/wiki/Alabama\\_people](https://en.wikipedia.org/wiki/Alabama_people) and <https://en.wikipedia.org/wiki/Coushatta>

Also see: <http://www.houstonpress.com/news/the-alabama-coushatta-still-exist-and-are-doing-what-they-need-to-do-to-continue-6599881>

Links to additional information (search each by tribe name):

Federal Register (recent rulings and issues): <https://www.federalregister.gov/>

Native Languages: <http://www.native-languages.org>

National Indian Law Library: <http://www.narf.org/nill/tribes/>

American Philosophical Society Indigenous Subject Guide: <https://search.amphilsoc.org/natam/search>

Library of Congress: <https://www.loc.gov/>

---

#### Bureau of Indian Affairs (BIA) Records (Record Group 75):

To focus on BIA records in the Online Catalog, use "advanced search" and enter 75 into the Record Group field.

Although important, the BIA is only one of many Federal agencies containing important records of Native Communities. For various reasons there are often periods of time where BIA records are not available for individual tribes. Other techniques should be used for these periods, such as searching by geographic area and/or time-period and widening the search to include ALL Federal agencies.

Community records could also be "buried" in BIA agency files not described in the Online Catalog in great enough detail to be searched directly by community name. Doing an advanced search using one or two words from the BIA office name or the entire office name in quotes, along with Record Group 75, may be beneficial. Some BIA offices known to hold **Alabama-Coushatta** records follow:

1926-1956 Anadarko Area Office



## Kickapoo Traditional Tribe of Texas

### Kickapoo

To hear modern Native Community names spoken aloud, see [National Indian Law Library](#).

**Always consult the Native People themselves for most accurate information, either through their website or in person.**

**Current Community Headquarters:** [Eagle Pass, Texas](#)

#### Citizen Archivist Catalog Tag: **NT536**

To find documents already tagged, copy and paste this tag into the [Advanced Online Catalog Search Form](#) in the "Tags" box. If documents are not tagged or you wish to contribute, see the [Citizen Archivist Program](#).

#### Personal archival assistance:

For additional help in finding records of the Traditional Texas Kickapoo, email the archivists at the National Archives at Fort Worth ([fortworth.archives@nara.gov](mailto:fortworth.archives@nara.gov)) or contact the [National Archives in Washington D.C.](#) Organizations listed on the [Texas Native Communities](#) page may also provide research assistance.

#### Searching in the [National Archives Online Catalog](#)

**Slashes (/) separate individual search strings.** Copy and paste or type exactly, including quotation marks if present. Also, try using a word from each of the community's other names and locations. See associated video for more detailed instructions.

**Suggested Search Terms: "Texas Kickapoo" / "Mexican Kickapoo" (returns both Oklahoma and Texas Kickapoo) / (there are very few records at the National Archives for the Texas Kickapoo.)**

**Related Searches: "Maverick County" Texas**

**This community may also have been recorded as: Texas Kickapoo / Kickapoo / Kiikaapoi / Kiwigapawa / Kickapoo Indian Reservation of Texas**

---

**Additional Resources:** The following sources may provide important background information and ideas for additional search terms.

**Traditional Texas Kickapoo** website: <https://kickapootexas.org/>

**Wikipedia (general information only):** [https://en.wikipedia.org/wiki/Kickapoo\\_Traditional\\_Tribe\\_of\\_Texas](https://en.wikipedia.org/wiki/Kickapoo_Traditional_Tribe_of_Texas) and [https://en.wikipedia.org/wiki/Kickapoo\\_people](https://en.wikipedia.org/wiki/Kickapoo_people)

**Links to additional Information (search each by tribe name):**

Federal Register (recent rulings and issues): <https://www.federalregister.gov/>

Native Languages: <http://www.native-languages.org>

National Indian Law Library: <http://www.narf.org/nill/tribes/>

American Philosophical Society Indigenous Subject Guide: <https://search.amphilsoc.org/natam/search>

Library of Congress: <https://www.loc.gov/>

---

#### **Bureau of Indian Affairs (BIA) Records (Record Group 75):**

To focus on BIA records in the Online Catalog, use "advanced search" and enter 75 into the Record Group field.

Although important, the BIA is only one of many Federal agencies containing important records of Native Communities. For various reasons there are often periods of time where BIA records are not available for individual tribes. Other techniques should be used for these periods, such as searching by geographic area and/or time-period and widening the search to include ALL Federal agencies.

Community records could also be "buried" in BIA agency files not described in the Online Catalog in great enough detail to be searched directly by community name. Doing an advanced search using one or two words from the BIA office name or the entire office name in quotes, along with Record Group 75, may be beneficial. Some BIA offices known to hold **Traditional Texas Kickapoo** records follow:

1901-1947 Shawnee Agency, 1909-1947 Finance Division, 1931-1945 Office of the Assistant to the Commissioner, 1947- (Main office) Bureau of Indian Affairs

# Ysleta del Sur Pueblo

## Pueblo (Southern Tiwa-speaking)

To hear modern Native Community names spoken aloud, see [National Indian Law Library](#).

**Always consult the Native People themselves for most accurate information, either through their website or in person.**

**Current Community Headquarters:** **El Paso, Texas**

### Citizen Archivist Catalog Tag: **NT535**

To find documents already tagged, copy and paste this tag into the [Advanced Online Catalog Search Form](#) in the "Tags" box. If documents are not tagged or you wish to contribute, see the [Citizen Archivist Program](#).

### Personal archival assistance:

For additional help in finding records of the Ysleta del Sur Pueblo, email the archivists at the National Archives at Denver ([denver.archives@nara.gov](mailto:denver.archives@nara.gov)) or contact the [National Archives in Washington D.C.](#) Organizations listed on the [Texas Native Communities](#) page may also provide research assistance.

### Searching in the [National Archives Online Catalog](#)

Slashes (/) separate individual search strings. Copy and paste or type exactly, including quotation marks if present. Also, try using a word from each of the community's other names and locations. See associated video for more detailed instructions.

**Suggested Search Terms:** **"Ysleta Del Sur Pueblo" / Ysleta (advanced search using Record Group 75)**

**Related Searches:** **"El Paso County" Texas**

**This community may also have been recorded as:** **Ysleta Del Sur Pueblo of Texas / YDSP / Tigua Pueblo / Tigua Reservation / Ysleta Del Sur Pueblo**

**Additional Resources:** The following sources may provide important background information and ideas for additional search terms.

Ysleta del Sur Pueblo website: <http://www.ysletadelsurpueblo.org/>

Wikipedia (general information only): [https://en.wikipedia.org/wiki/Ysleta\\_del\\_Sur\\_Pueblo](https://en.wikipedia.org/wiki/Ysleta_del_Sur_Pueblo) and <https://en.wikipedia.org/wiki/Puebloans> and [https://en.wikipedia.org/wiki/Tiwa\\_languages](https://en.wikipedia.org/wiki/Tiwa_languages)

Links to additional information (search each by tribe name):

Federal Register (recent rulings and issues): <https://www.federalregister.gov/>

Native Languages: <http://www.native-languages.org>

National Indian Law Library: <http://www.narf.org/nill/tribes/>

American Philosophical Society Indigenous Subject Guide: <https://search.amphilsoc.org/natam/search>

Library of Congress: <https://www.loc.gov/>

### Bureau of Indian Affairs (BIA) Records (Record Group 75):

To focus on BIA records in the Online Catalog, use "advanced search" and enter 75 into the Record Group field.

Although important, the BIA is only one of many Federal agencies containing important records of Native Communities. For various reasons there are often periods of time where BIA records are not available for individual tribes. Other techniques should be used for these periods, such as searching by geographic area and/or time-period and widening the search to include ALL Federal agencies.

Community records could also be "buried" in BIA agency files not described in the Online Catalog in great enough detail to be searched directly by community name. Doing an advanced search using one or two words from the BIA office name or the entire office name in quotes, along with Record Group 75, may be beneficial. Some BIA offices known to hold **Ysleta del Sur Pueblo** records follow:

1869-1933 Board of Indian Commissioners, 1879-1918 Carlisle Indian School, 1952 - 1966 Gallup Area Office